

F 43
Columbus



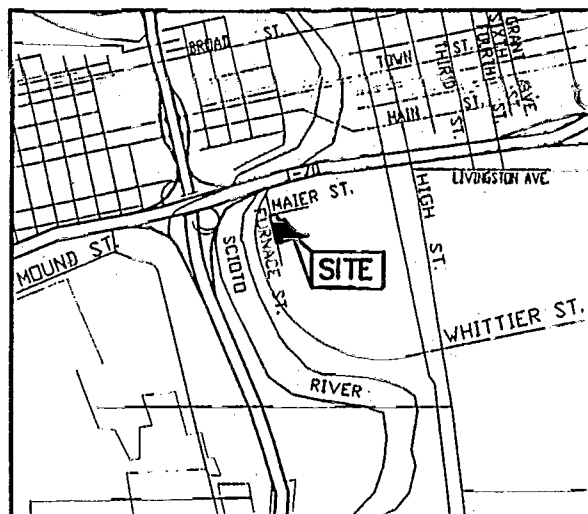
SURVEY OF 6.568 ACRE TRACT

LOCATED IN HALF SECTION 27, TOWNSHIP 5, RANGE 16
REFUGEE LANDS
CITY OF COLUMBUS, FRANKLIN COUNTY, OHIO

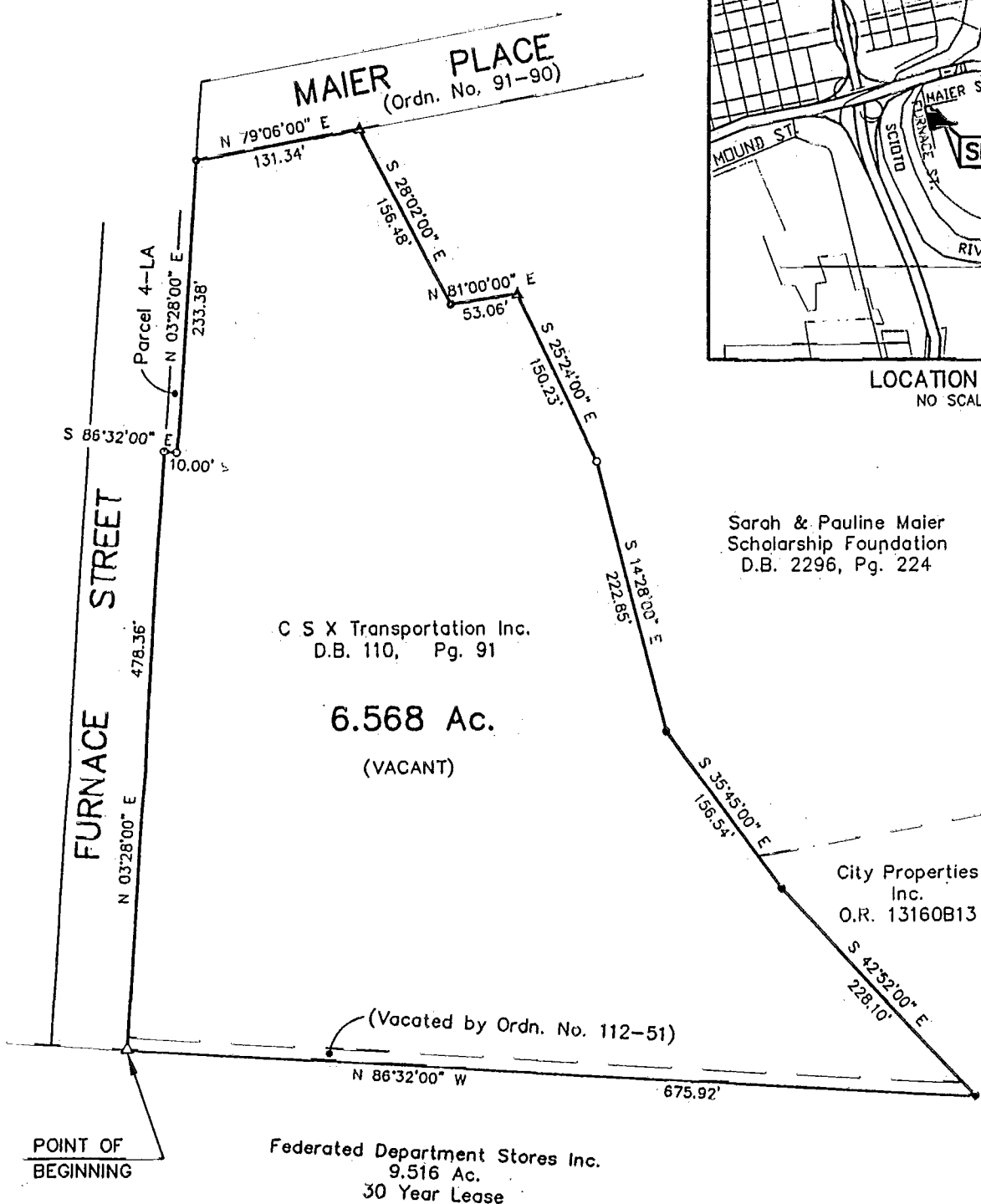
SCALE 1" = 100'



APRIL 21, 1999



LOCATION MAP
NO SCALE



Sarah & Pauline Maier
Scholarship Foundation
D.B. 2296, Pg. 224

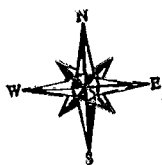
C S X Transportation Inc.
D.B. 110, Pg. 91

6.568 Ac.
(VACANT)

City Properties
Inc.
O.R. 13160B13

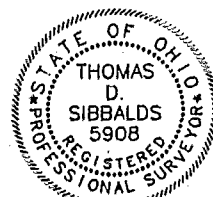
Federated Department Stores Inc.
9.516 Ac.
30 Year Lease

POINT OF
BEGINNING



- ▲ = Rail with Cross
- △ = RR Spk. Set
- = I.P. Fnd.
- = I.P. Set

To: CSX Transportation, Inc.
This is to certify that this map or plat and the survey on which it is based were made (i) in accordance with "Minimum Standard Detail Requirements for ALTA/ACSM Land Title Surveys," jointly established and adopted by ALTA, ACSM and NSPS in 1997, and includes Items 1, 2, 4, 7, 8, 9, 10, 12, 13, 14 & 15 of Table A thereof, and (ii) pursuant to the Accuracy Standards (as adopted by ALTA and ACSM and in effect on the date of this certification) of an "Urban" Survey.



E.M.H.&T. INC.

By *Thomas D. Sibbalds*
Professional Surveyor No. 5908

BASIS OF BEARINGS : The bearings shown hereon are based on the same meridian as the easterly right-of-way line of Furnace Street (N 3°28'00" E) as shown of record in Official Record 9097C18, Recorder's Office, Franklin County, Ohio.

02357100