

18/857100

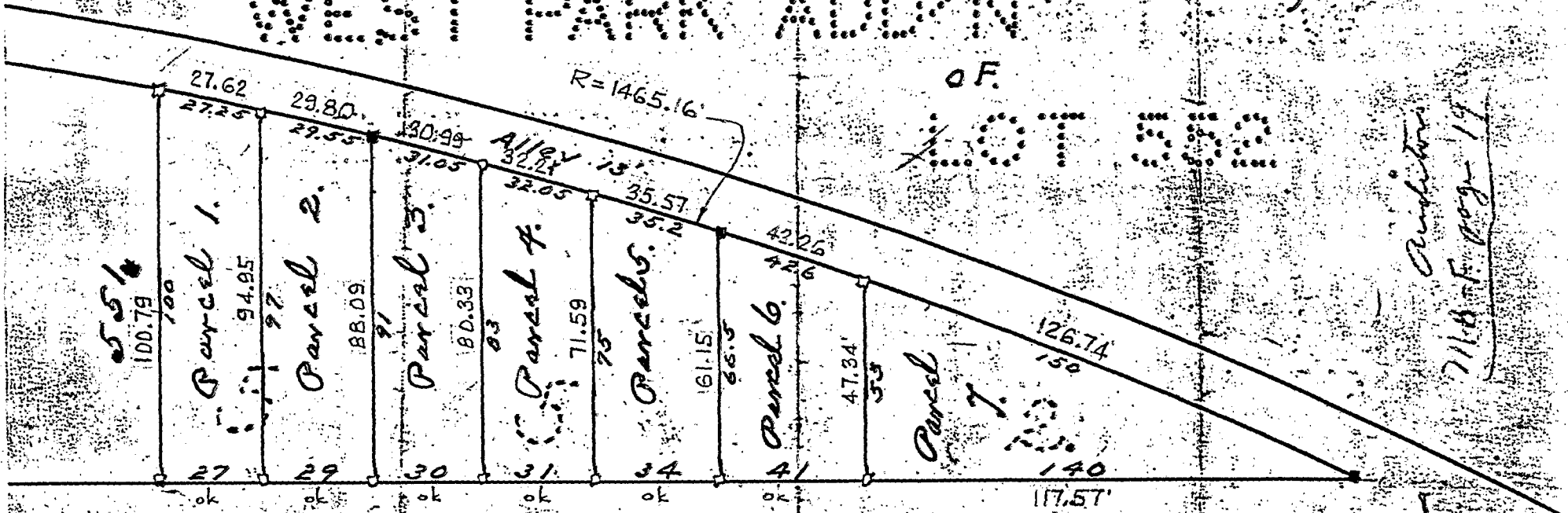
J. E. JOHNS PARCELS

WEST PARK ADDON (un-recorded)

OF

LOT 50A

R=1465.16'



Auditors
7/11/85 page 19

Noble & Co. Surveyors.

COMPUTED DIMENSIONS ADDED OCTOBER 1993 BY R. G. WATTS.
RR. CURVE FROM TRACK MAP IN FR. CO. ENGR'S OFFICE

May 1927.

Tracing cloth original in abstract for Parcels 1 & 2 owned by Wm. T. Lawler Caldwell OH