



SURVEY OF A PORTION OF PEARL ST.
 Located In Section 5, Township 5, Range 22
 Refugee Lands
 City Of Columbus, Franklin County, Ohio

SCALE 1" = 10'

JULY 13, 2000



IN FEET



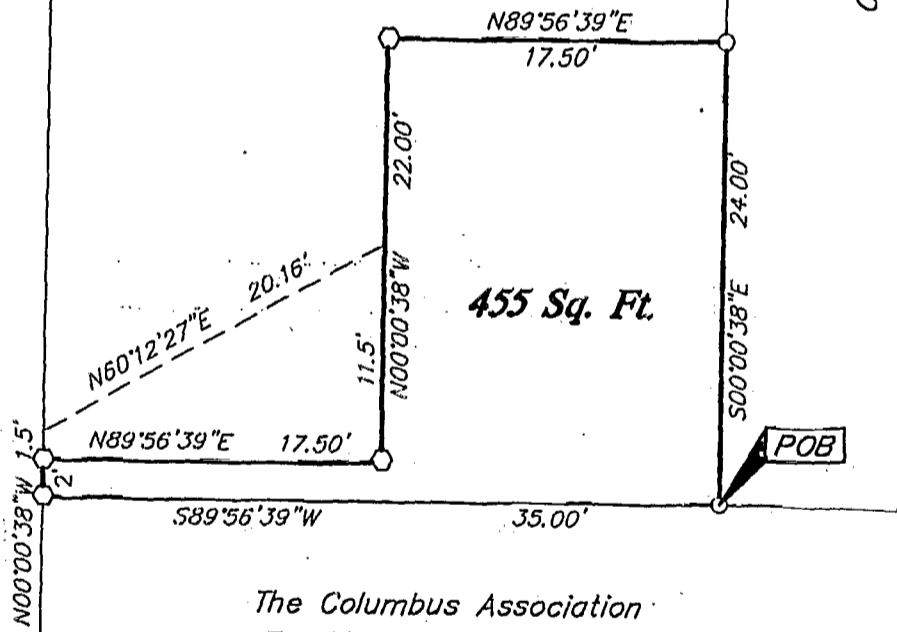
City Of Columbus
 Lot 336
 D.B. "F", Pg. 332

R/W

PEARL STREET (35')

City Of Columbus
 Lot 438
 D.B. "F", Pg. 332

R/W

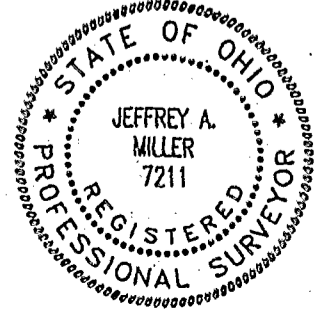


The Columbus Association
 For The Performing Arts
 O.R. 10687 J 07

The basis of bearing for this drawing is North 00°00'38" West,
 for the westerly right of way line of Pearl Street.

- = MON. FND.
- = I.P. FND.
- = I.P. SET
- ◆ = MAG. NAIL FND.
- ◊ = MAG. NAIL SET
- ▲ = R.R. SPK. FND.
- △ = R.R. SPK. SET
- ◆ = P.K. NAIL FND.

I.P.S Set are 13/16" I.D. Iron pipe W/ cap inscribed EMH&T.



E.M.H.&T. INC.

By Jeffrey A. Miller 2-6-01
 Professional Surveyor No. 7211

COLUMBUS

8285-7125-59-83

PLOTTED BY REARER - JULY 13, 2000 - 1:45 PM