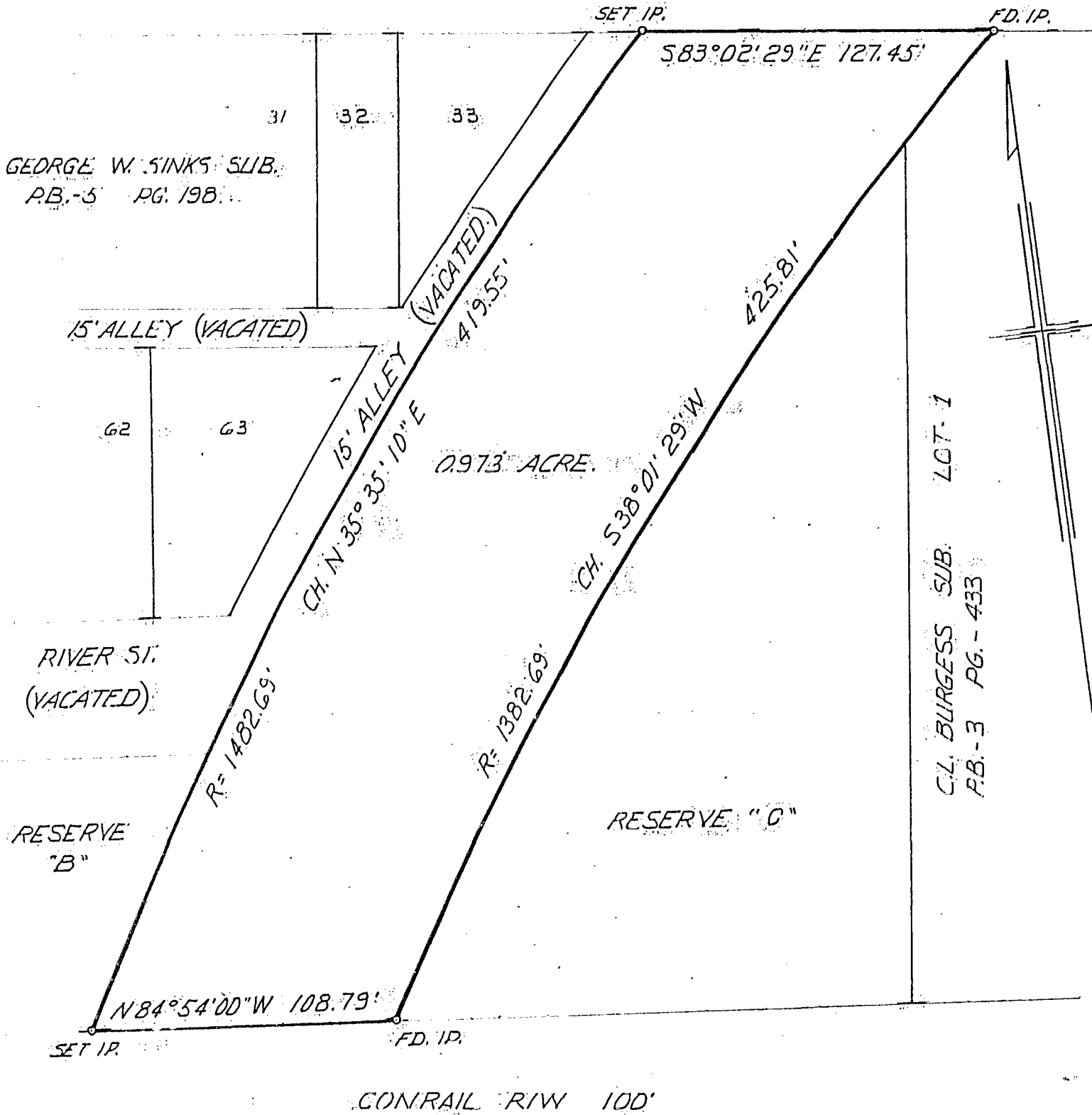


181857150

THE BEARINGS USED ARE BASED ON THE BEARING FOR THE CONRAIL RAILROAD AS SHOWN ON PLAT "A" PARTITION OF WM S. SULLIVAN'S ESTATE.

McKINLEY AVE. 60'

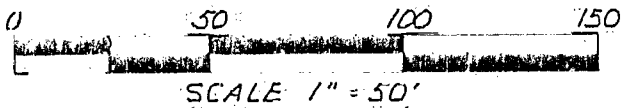


GEORGE W. SINKS SUB. P.B. - 5 PG. 198.

C.L. BURGESS SUB. LOT 1 P.B. - 3 PG. - 433

EXHIBIT A-1

PLAT OF SURVEY
 OF
 CSX RAILROAD 0.973 AC. TRACT
 BETWEEN MCKINLEY AVE.
 AND CONRAIL RAILROAD FOR
 COLUMBUS HEATING AND VENTILATING.
 JUNE 1989 1007-89



Robert G. Watts
 ROBERT G. WATTS RPL'S # 4138

OS 111-1-31