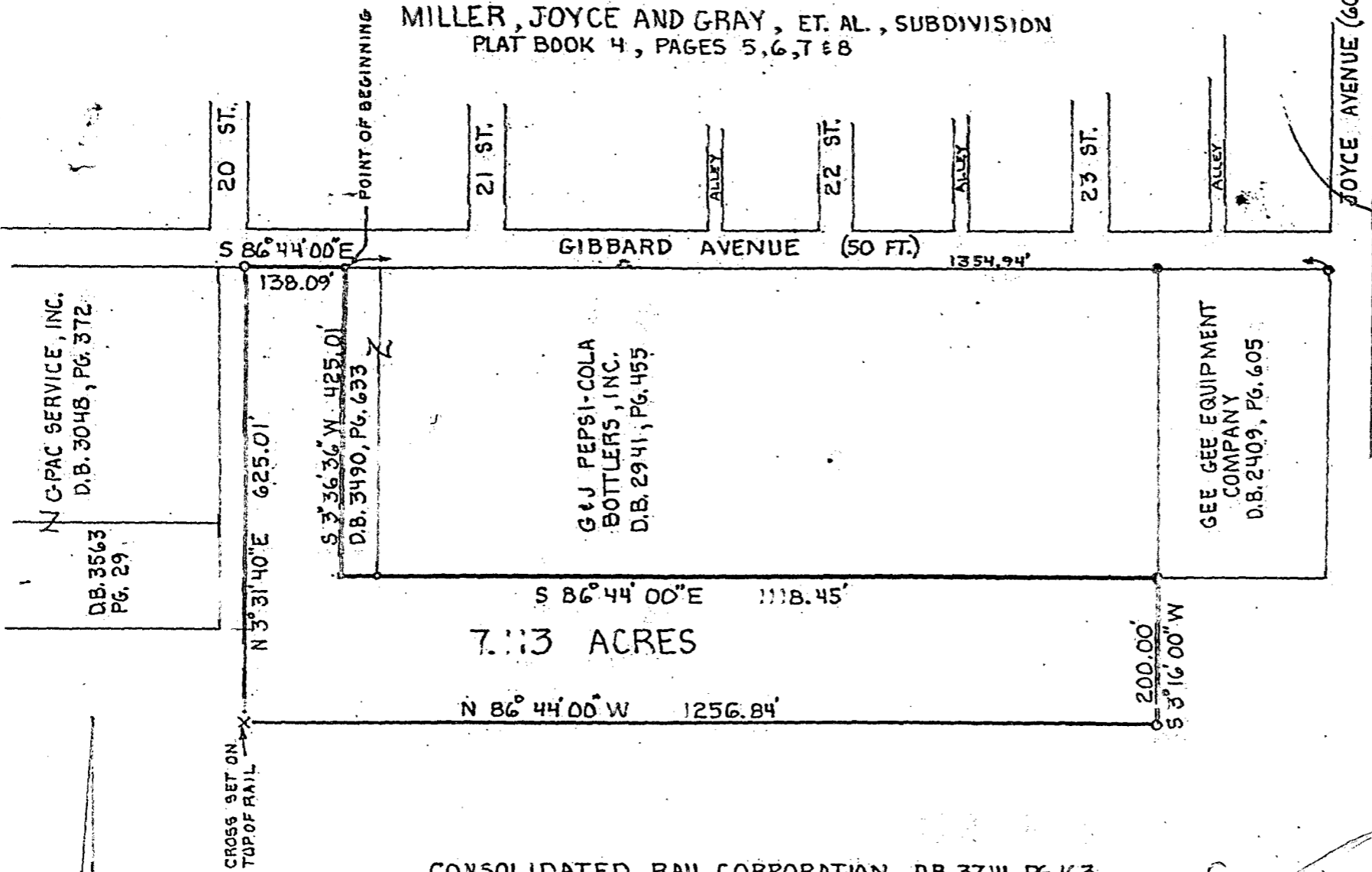


1 8335 7226
 1 8335 7200
 1 8360 7225
 1 8360 7200

HOCKADEN AND ASSOCIATES, INC.
 CONSULTING ENGINEERS
 883 N. CASSADY AVENUE
 COLUMBUS, OHIO 43219

P-41
P-42
P-51
P-52
 (614) 252-0993



CONSOLIDATED RAIL CORPORATION, D.B. 3714, PG. 163
 ORIGINALLY DESCRIBED BY DEEDS TO:
 PITTSBURGH, CINCINNATI, CHICAGO AND ST. LOUIS RAILWAY COMPANY
 D.B. 361, PG. 315 AND D.B. 110, PG. 124

- LEGEND**
- IRON PIN FOUND
 - IRON PIN SET

We hereby certify that the foregoing plat was prepared from an actual survey of the premises.

P-42
P-41
P-51
P-52

SCALE 1" = 200'

SURVD.	DRAWN	CHECKED
B.M.	J.L.P.	R.G.G.

DATE	10-1-87
REVISED	DATES

38255
ORDER NUMBERS

HOCKADEN AND ASSOCIATES, INC.
 CONSULTING ENGINEERS
 By: *K. Richard S. ...*
 REGISTERED SURVEYOR