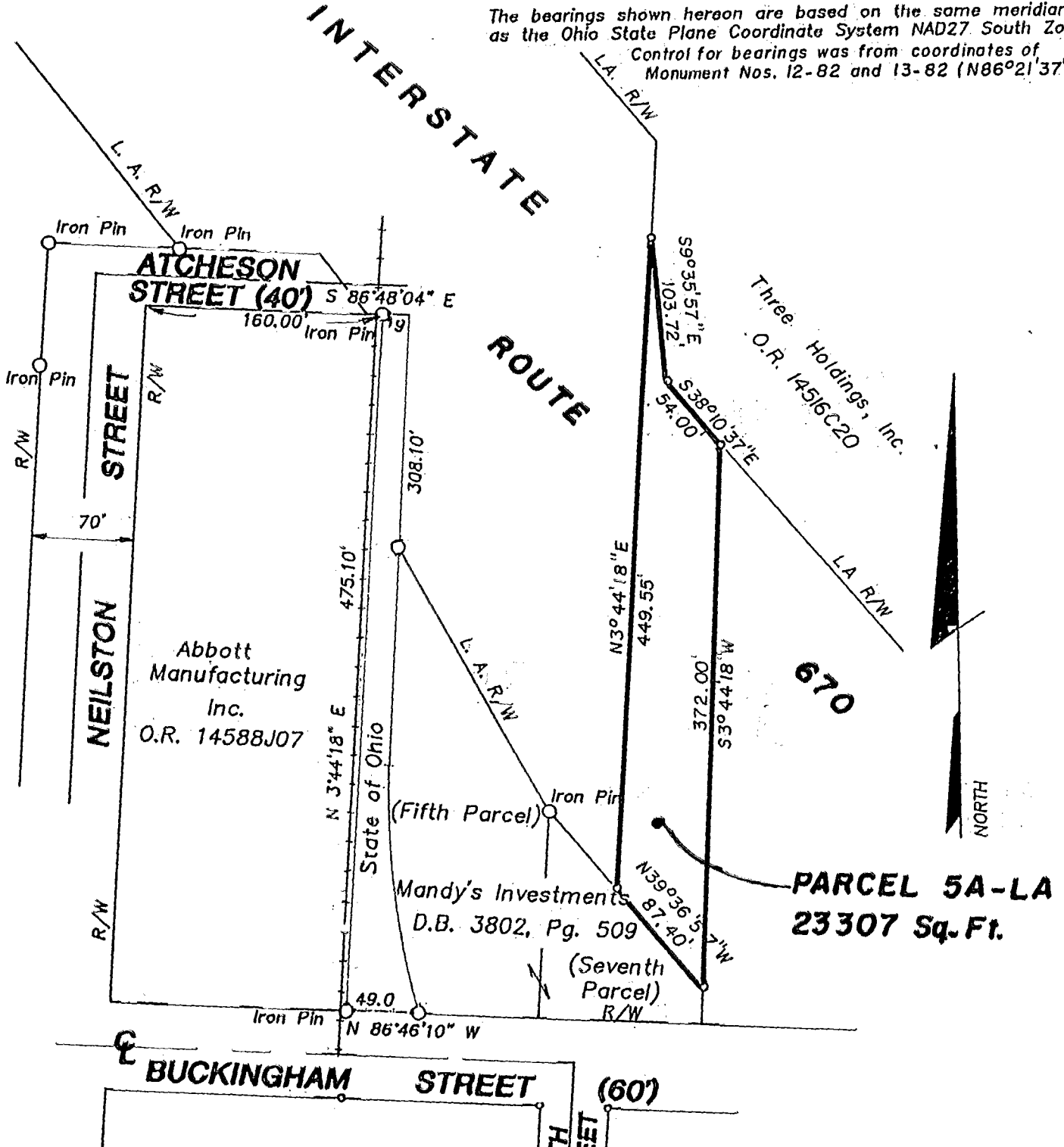


SURVEY OF ACREAGE PARCEL
LOCATED IN SECTION 9, TOWNSHIP 5, RANGE 22,
REFUGEE LANDS

CITY OF COLUMBUS, FRANKLIN COUNTY, OHIO

NOTE:

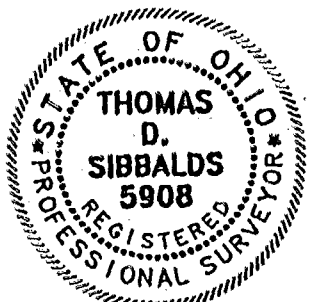
The bearings shown hereon are based on the same meridian as the Ohio State Plane Coordinate System NAD27, South Zone. Control for bearings was from coordinates of Monument Nos. 12-82 and 13-82 (N86°21'37"W)



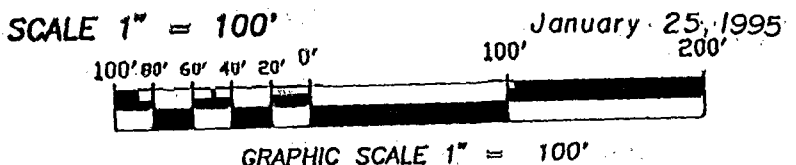
670

PARCEL 5A-LA
23307 Sq. Ft.

Surveyed & Platted
 By
EVANS, MECHWART, HAMBLETON, & TILTON INC.
 CONSULTING ENGINEERS AND SURVEYORS
 170 MILL STREET
 GAHANNA, OHIO 43230
 614/471-5150



By Thomas D. Sibbalds
 Thomas D. Sibbalds
 Registered Surveyor No. 5908



o = Iron Pin

MARION 82 857 175