

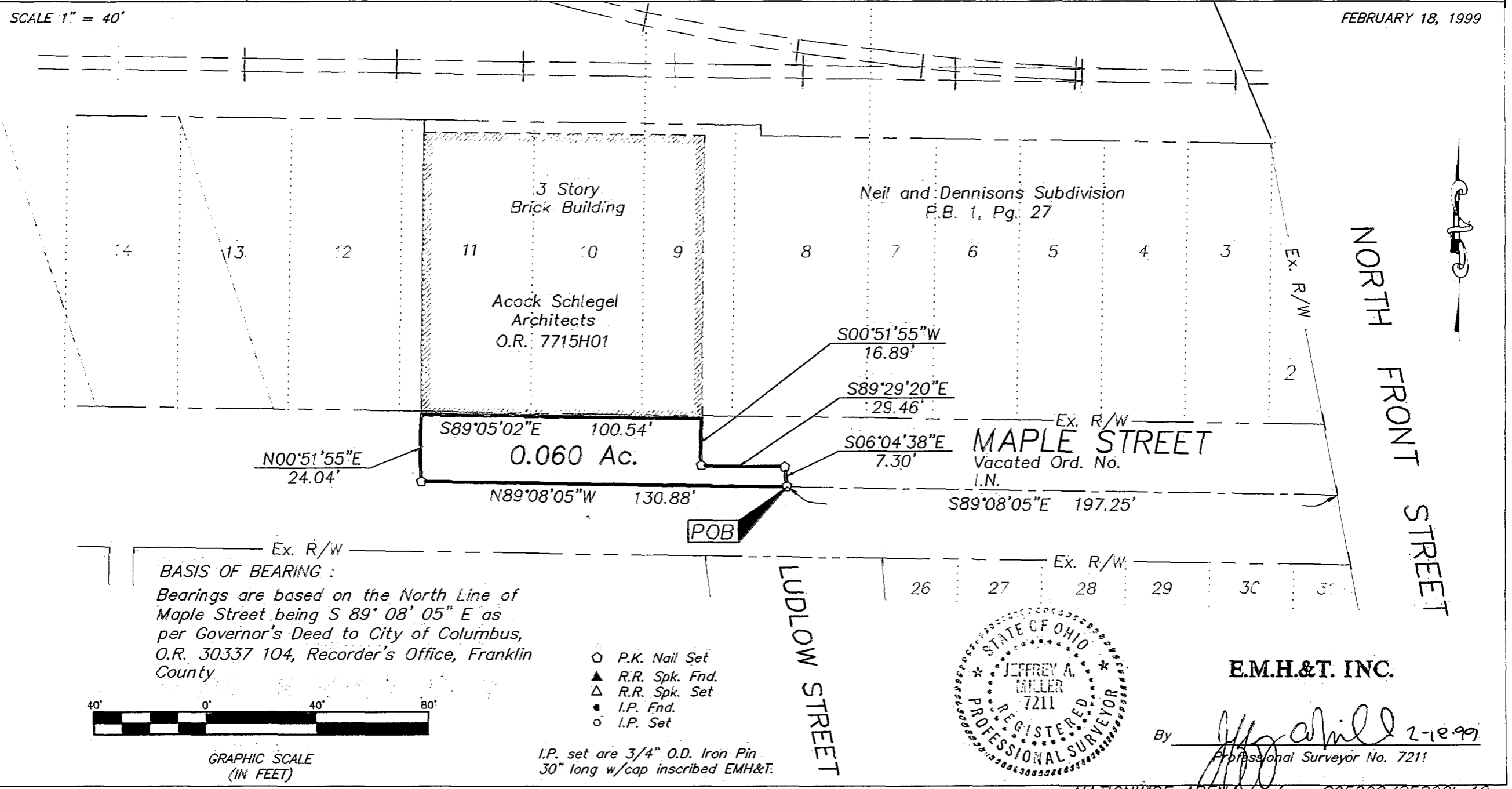


# SURVEY OF PORTION OF VACATED MAPLE STREET

SEC 8 TWP 5 RNG 22 REFUGEE LANDS  
CITY OF COLUMBUS, FRANKLIN COUNTY, OHIO

SCALE 1" = 40'

FEBRUARY 18, 1999



**BASIS OF BEARING :**  
Bearings are based on the North Line of Maple Street being S 89° 08' 05" E as per Governor's Deed to City of Columbus, O.R. 30337 104, Recorder's Office, Franklin County

- P.K. Nail Set
- ▲ R.R. Spk. Fnd.
- △ R.R. Spk. Set
- I.P. Fnd.
- I.P. Set



GRAPHIC SCALE (IN FEET)

I.P. set are 3/4" O.D. Iron Pin 30" long w/cap inscribed EMH&T.



**E.M.H.&T. INC.**

By Jeffrey A. Miller 2-18-99  
Professional Surveyor No. 7211