

BAUER, DAVIDSON & MERCHANT, INC.

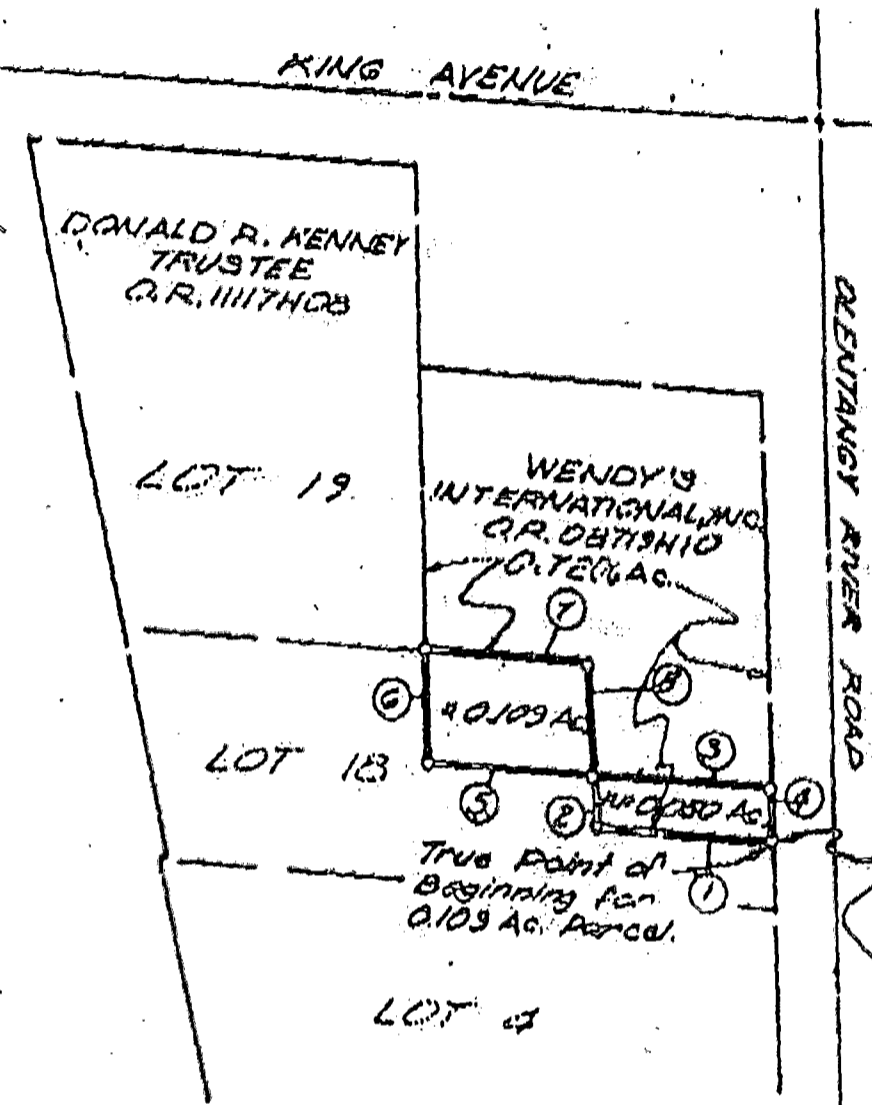
181657150
182107250

CONSULTING ENGINEERS

255 GREEN MEADOWS DRIVE SOUTH SUITE B P.O. BOX 152 POWELL, OHIO 43065

BOUNDARY SURVEY MAP OF ACREAGE PARCELS OF LAND LOCATED SOUTH OF KING AVENUE AND WEST OF OLENTANGY RIVER ROAD, IN THE CITY OF COLUMBUS, COUNTY OF FRANKLIN, STATE OF OHIO.

22-111



Situated in the State of Ohio, County of Franklin, City of Columbus, being in Lot No. 18 of the subdivision of lots (No. 317) of the Old Franklin County Survey Farm lots as the same are numbered and delineated upon the recorded plot of same, of record in Plat Book 3, Page 175, containing 0.1091 acre of land, more or less, said 0.109 acre of land being part of that tract of land described in EXHIBIT A in deed to Donald R. Kenney, Trustee of record in Official Record 1117H08 both being of record in the Recorder's Office, Franklin County, Ohio

Reference Point of Beginning for 0.109 Ac. Parcel, Point of Beginning for 0.250 Ac. Parcel.

- ① N 86° 56' 15" W 89.40'
- ② N 2° 03' 19" W 25.08'
- ③ S 86° 20' 10" E 89.89'
- ④ S 1° 08' 15" E 24.09'
- ⑤ N 86° 20' 10" W 85.54'
- ⑥ N 0° 59' 21" W 56.19'
- ⑦ S 86° 20' 10" E 84.43'
- ⑧ S 2° 03' 19" E 56.28'

Situated in the State of Ohio, County of Franklin, City of Columbus, being in Lot No. 18 of the subdivision of lots (No. 317) of the Old Franklin County Survey Farm lots as the same are numbered and delineated upon the recorded plot of same, of record in Plat Book 3, Page 175, containing 0.250 acre of land, more or less, said 0.250 acre of land being part of that 0.7206 acre tract of land described in EXHIBIT A in the deed to Wendy's International, Inc. of record in Official Record 08719H10, both being of record in the Recorder's Office, Franklin County, Ohio.

We hereby certify that the foregoing map was prepared from information obtained from an actual field survey conducted by Bauer, Davidson & Merchant, Inc. in January of 1988.

The bearings shown on the foregoing map are based on an assumed meridian.

BAUER, DAVIDSON & MERCHANT, INC.
Consulting Engineers

John W. McCombs
Professional Surveyor No. 6661

Order No. 4301-87
Scale: 1" = 100'
February 29, 1988

