

82357300

0-16

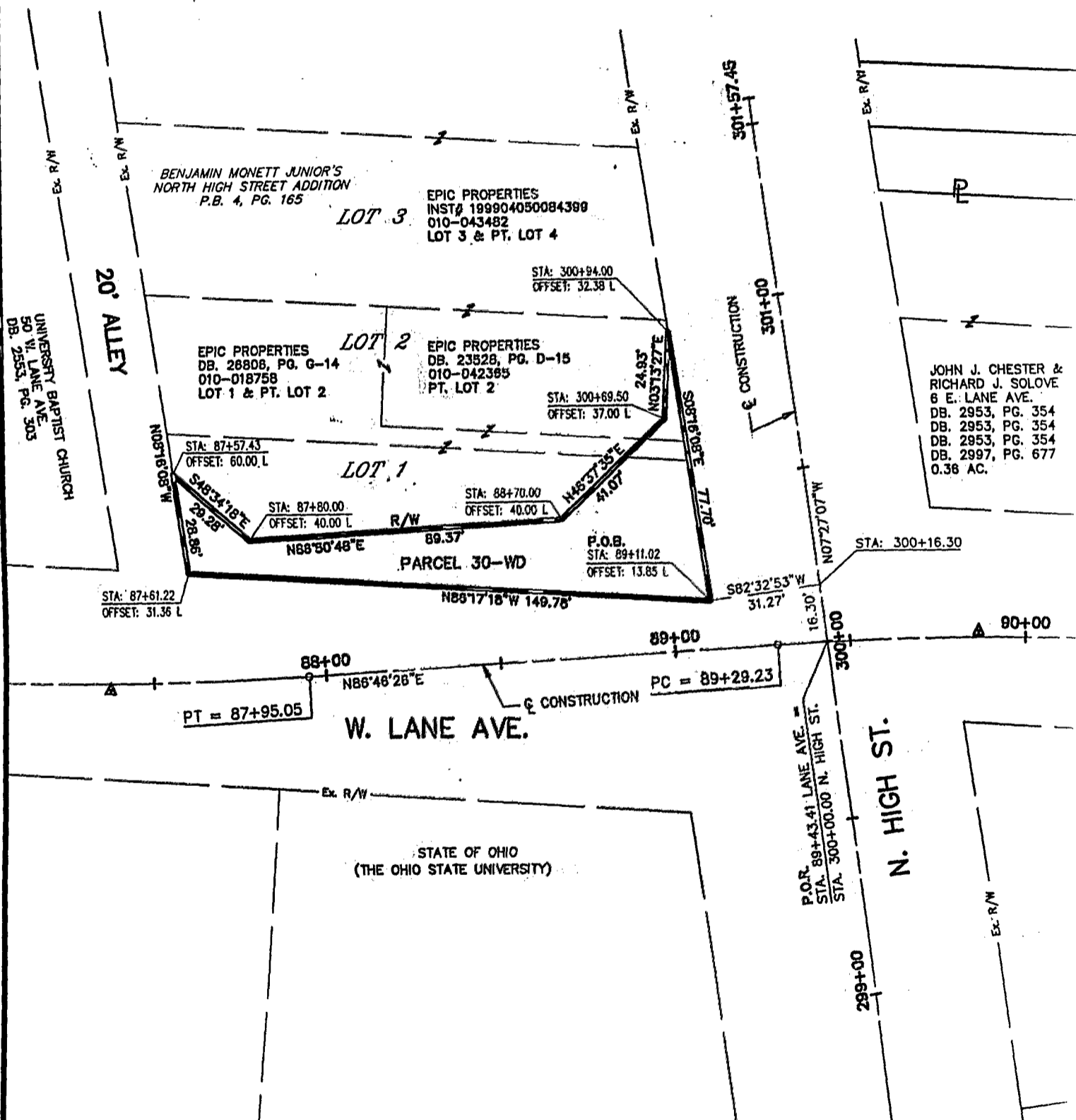
CLINTON TWP

Situated in the State of Ohio, County of Franklin, City of Columbus, Section 3, Township 1, Range 18, United States Military Lands, and being part of Lot One and Lot Two of Benjamin Monett Junior's North High Street Addition to The City of Columbus, of record in Plat Book 4, Page 165, said Lots One and Two being described in deeds to Epic Properties of record in Official Record 23528 D15, and Official Record 26806 G14, all records are on file in the Recorder's Office, Franklin County, Ohio, all stations and offsets reference the Centerline Survey Plat of Lane Avenue prepared by ms consultants, inc. for the City of Columbus.

The bearings for this drawing are based on a bearing of North 68°52'08" East from Franklin County control monument "ASTRO" to control monument "LANE" and are based on the NAD83 State Plane Coordinate System, Ohio South Zone. This description was prepared by ms consultants, inc. from an actual field survey (1995-1999) and existing records.

A-16
36617
(010) 18758
&
42365

PARCEL 30-WD
010-018758 = 0.074 AC.
010-042365 = 0.003 AC.
TOTAL = 0.077 AC.



82357300
OCTOBER-26-2000-15:12
300_P1A1.DWG

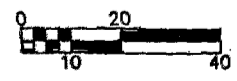
PREPARED FOR
CITY OF COLUMBUS, OHIO

LANE AVENUE
PARCEL 30-WD (0.077 Ac.)
WARRANTY DEED

PREPARED BY
ms consultants, inc.



CONSULTING ENGINEERS & PLANNERS
2500 BUSCH BOULEVARD, COLUMBUS, OHIO



DATE 10-26-00	CALC. M.M.R.	SHEET 1 of 1
SCALE 1"=40'	CHKD. J.P.V.	

JAMES P. VILLACRES
PROFESSIONAL SURVEYOR NO. 7912

