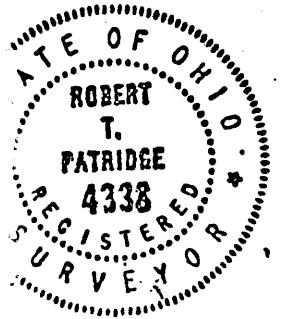
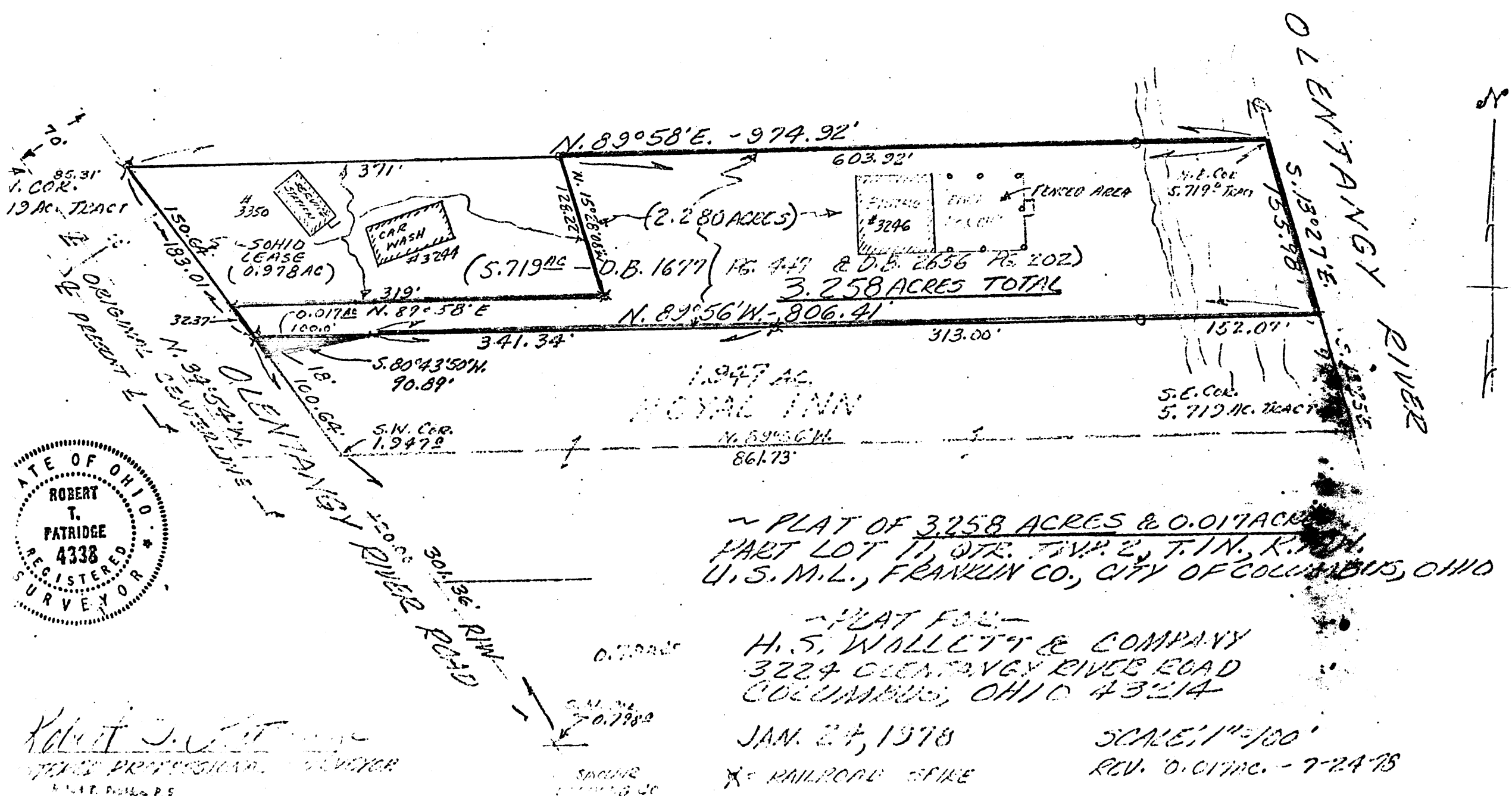


81857375
82107375

COLUMBUS
O-13-D



~ PLAT OF 3.258 ACRES & 0.017 ACRES
PART LOT 11, QTR. 7, T. 2 N., R. 1 W., K. 11 W.,
U.S.M.L., FRANKLIN CO., CITY OF COLUMBUS, OHIO

~ PLAT FOR ~
H. S. WOLLETT & COMPANY
3224 OLENTANGY RIVER ROAD
COLUMBUS, OHIO 43214

JAN. 27, 1978

SCALE: 1" = 100'
REV. 0.017 AC. - 7-24-78

X = RAILROAD SPIRE

Robert T. Patridge
Professional Surveyor
1111 T. ... P.S.
... R.J.