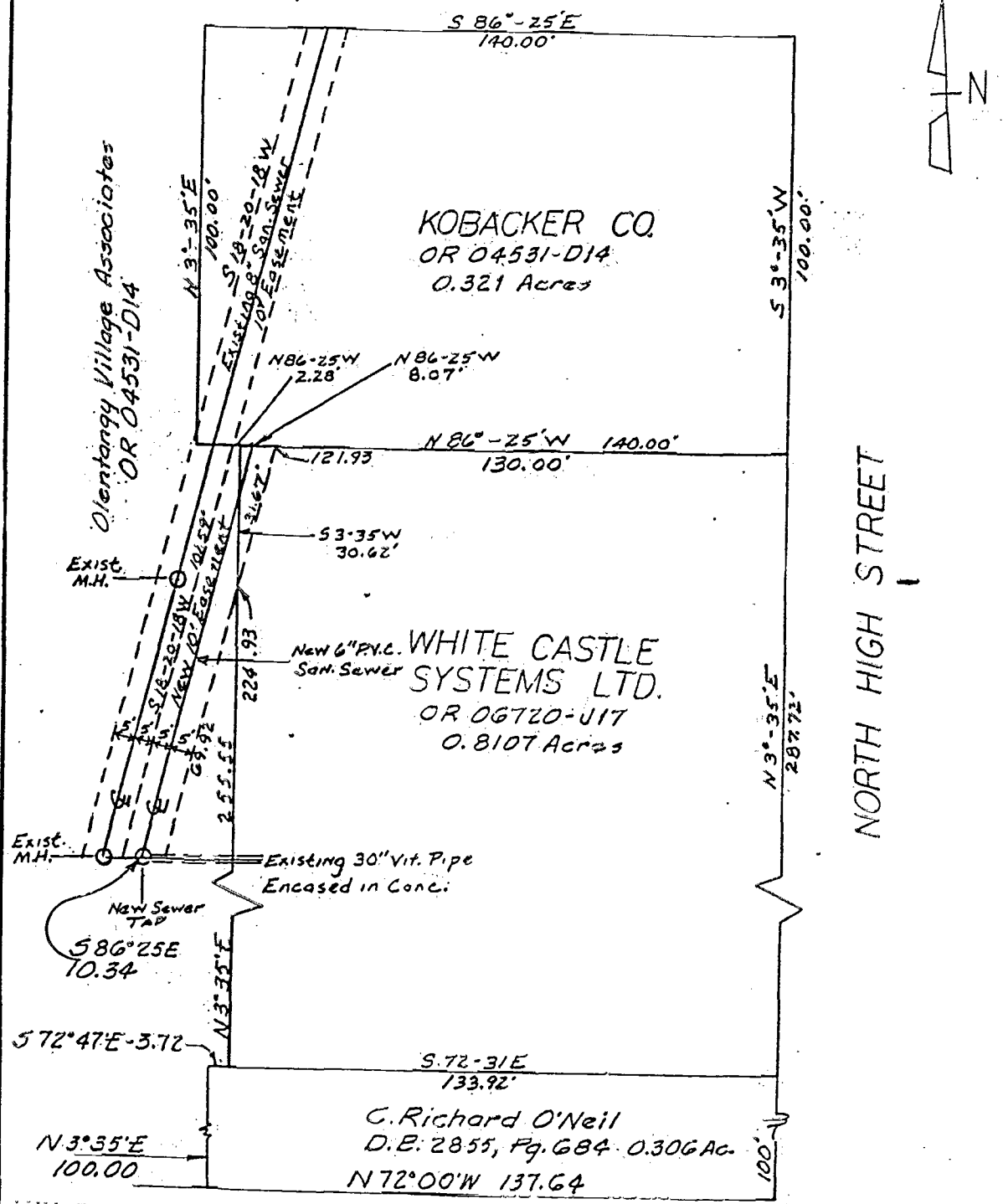


PLAT SHOWING SEWER EASEMENT THROUGH OLENTANGY VILLAGE ASSOCIATES TRACT AND WHITE CASTLE SYSTEMS TRACT TO SERVE KOBACKER COMPANY TRACT, CITY OF COLUMBUS, FRANKLIN COUNTY, OHIO.

PB. _____ Page _____ Recorders Office, FRANKLIN County, Ohio.
 Scale 1" = 30'. Date 11 NOVEMBER 1987

Handwritten scribbles and numbers, including a large '0' and '7'.



82357357

Harry L. Greene
 Harry L. Greene, Registered Surveyor, No. 4058