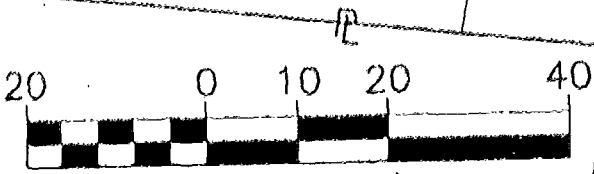


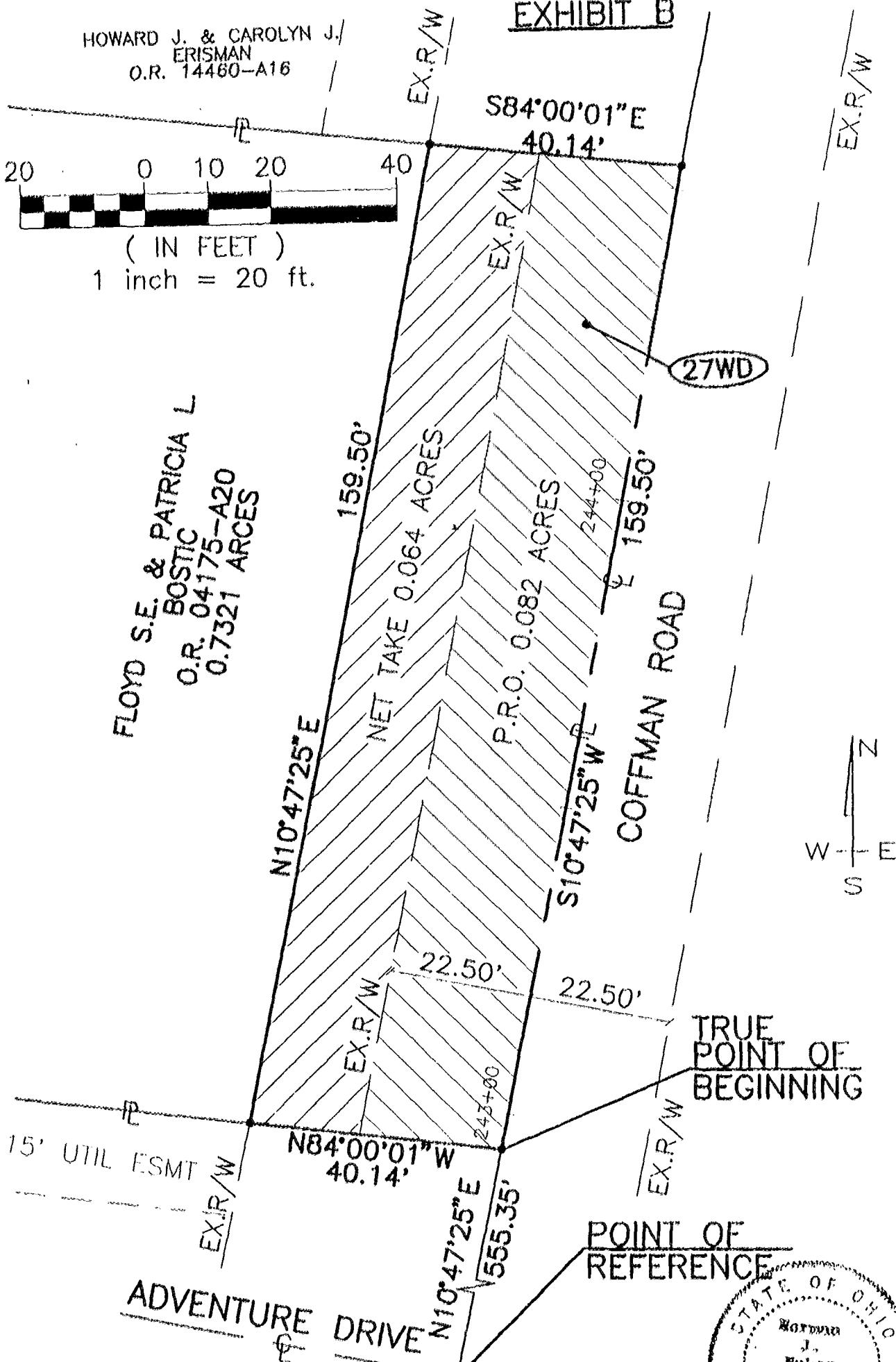
HOWARD J. & CAROLYN J.  
ERISMAN  
O.R. 14460-A16

**EXHIBIT B**



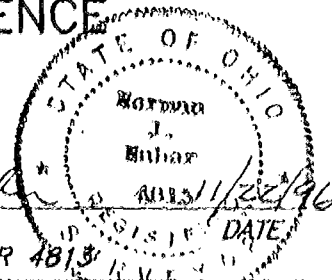
( IN FEET )  
1 inch = 20 ft.

FLOYD S.E. & PATRICIA L  
BOSTIC  
O.R. 04175-A20  
0.7321 ACRES



TRUE POINT OF BEGINNING

POINT OF REFERENCE



*Norman J. Nuber*  
NORMAN J. NUBER  
REGISTERED LAND SURVEYOR 4813

0.146 AC. GROSS TAKE  
0.082 AC. P.R.O.  
0.064 AC. NET TAKE

NOTES:  
BEARINGS SHOWN HEREON ARE BASED ON AN ACTUAL FIELD SURVEY UTILITIZING USGS MONUMENTS BRITTON, DAVIDSON AND LEVEC TOWER BY JOHN E. FOSTER AND ASSOCIATES, INC IN MAY 1989.

**COFFMAN ROADWAY IMPROVEMENTS PROJECT**  
CITY OF DUBLIN  
PARCEL 27WD

DRAWN BY DNL	DESIGN BY DHG	CHECKED BY AJN	CALC BY DAL
-----------------	------------------	-------------------	----------------

**JOHN E. FOSTER AND ASSOCIATES, INC.**  
ENGINEERS • ARCHITECTS • SURVEYORS  
COLUMBUS, OHIO

WASHINGTON 79 107 700