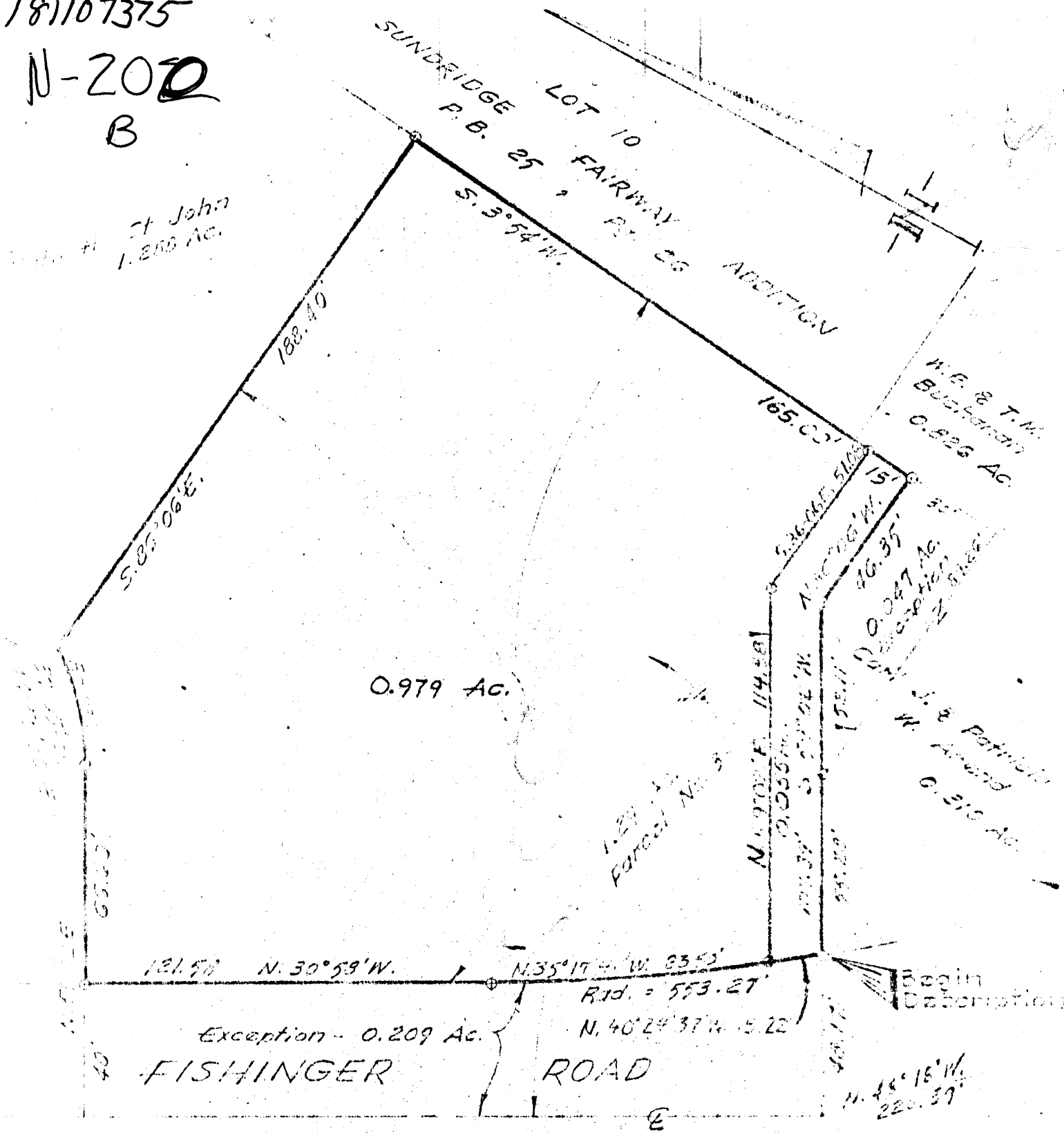


181107375

N-200
B

St John
1.268 Ac.



Jan. 17, 1980.
Scale 1" = 40'
→ = iron pin cons.

N-200-B

PLAT SHOWING SURVEY OF AN 0.055 ACRE TRACT OFF OF THE SOUTHERLY SIDE OF THE CHARLES D. SCHLOSS AND MARJORIE R. SCHLOSS 1.031 ACRE TRACT AS SHOWN OF RECORD IN DEED BOOK 2983, PAGE 368, RECORDER'S OFFICE, FRANKLIN COUNTY OHIO.

Harry L. Greene
Harry L. Greene, Reg. Surveyor, No. 4078

Greene
Greene