

183607475

HOCKADEN AND ASSOCIATES, INC.

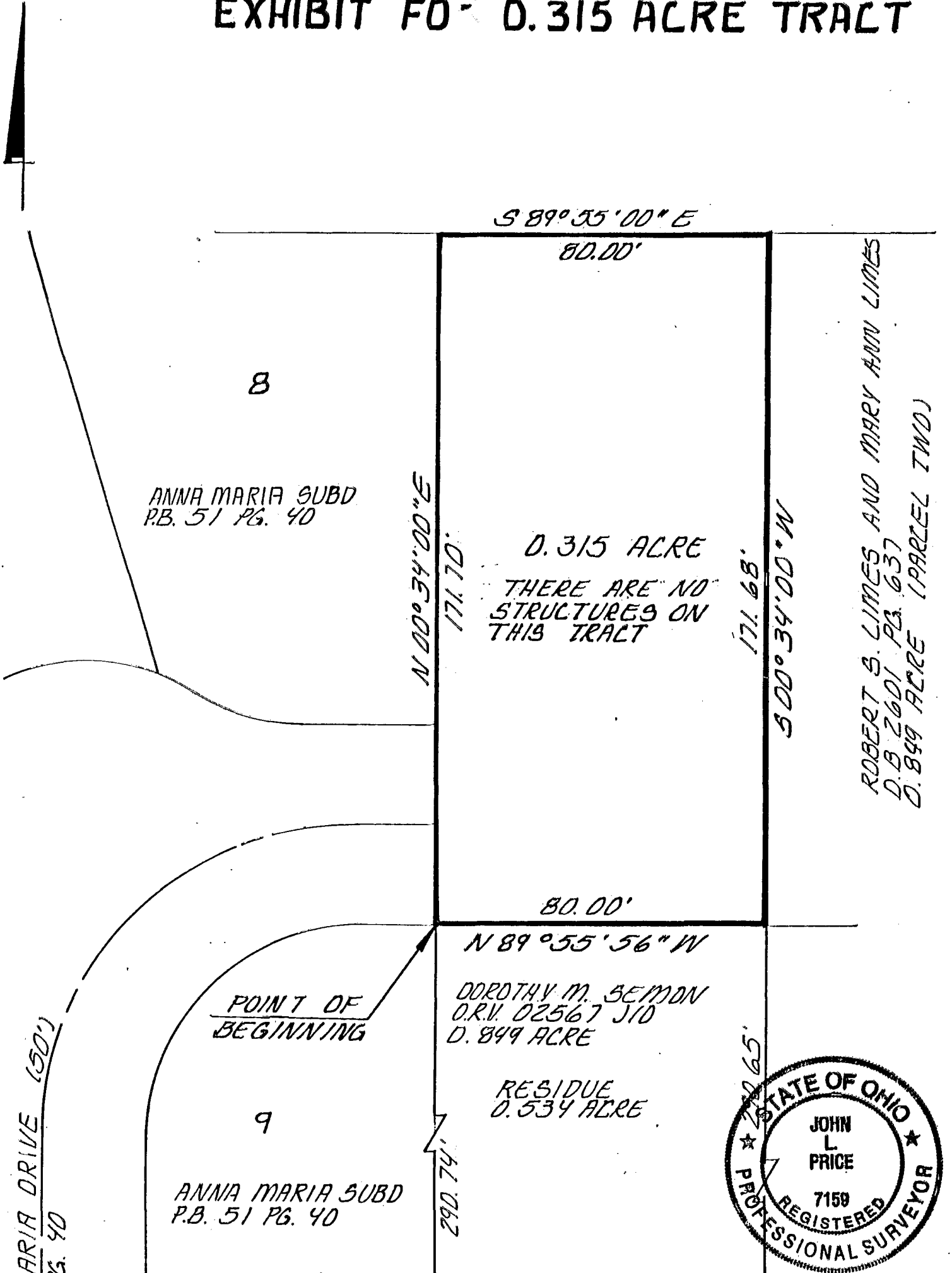
CONSULTING ENGINEERS

883 N. CASSADY AVENUE

COLUMBUS, OHIO 43219

(614) 252-0993

EXHIBIT F0 - 0.315 ACRE TRACT



ANNA MARIA DRIVE (50')
P.B. 51, PG. 40

ANNA MARIA SUBD
P.B. 51 PG. 40

ANNA MARIA SUBD
P.B. 51 PG. 40

POINT OF
BEGINNING

0.315 ACRE
THERE ARE NO
STRUCTURES ON
THIS TRACT

RESIDUE
0.534 ACRE

ROBERT S. LIMES AND MARY ANN LIMES
D.B. 2601 P.B. 637
0.899 ACRE (PARCEL TWO)



FERRIS ROAD (60')

THE BEARING REFERENCE FOR THIS PLAT IS THE SAME AS
DELINEATED IN A DEED TO, DOROTHY M. SEMON OF RECORD IN
OFFICIAL RECORD VOLUME 02567 J10, RECORDERS OFFICE FRANKLIN
COUNTY, OHIO.

HOCKADEN AND ASSOCIATES, INC.
CONSULTING ENGINEERS

SCALE 1" = 30'

DATE: 6-23-92 P771

REVISED DATES

ORDER NUMBERS

SURVD.	DRAWN	CHECKED
	C.E.L.	J.L.P.

By: *John L. Price* 6/25/92
REGISTERED SURVEYOR