



CIVIL ENGINEERING

ASSOCIATES

9015

Antares Avenue

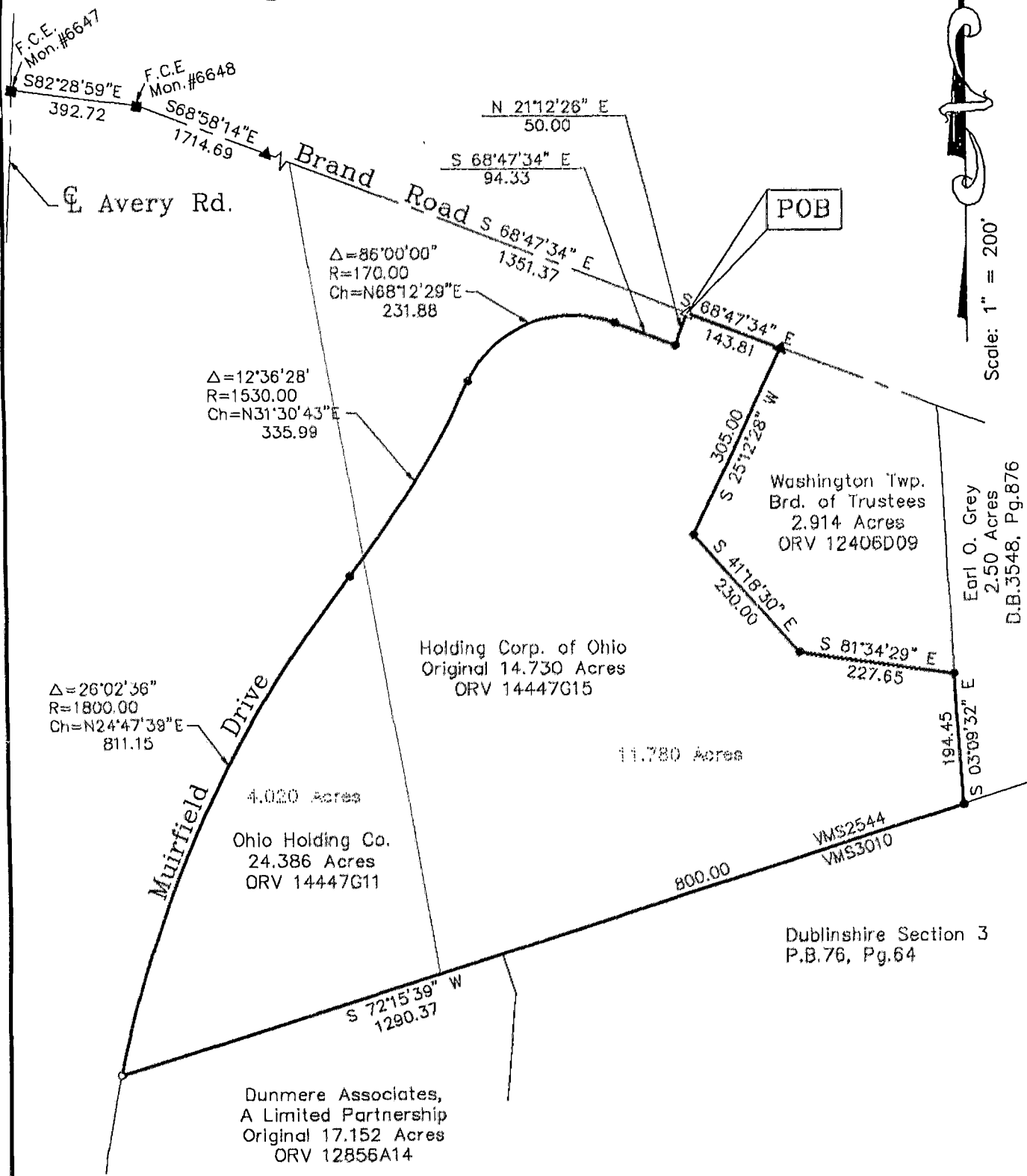
Columbus, Ohio 43240

Tel. 614.433.9015

Fax 614.433.9513

15.800 ACRES

State of Ohio, County of Franklin, City of Dublin
Virginia Military Survey No. 2544



Δ=26°02'36"
R=1800.00
Ch=N24°47'39" E
811.15

Δ=12°36'28"
R=1530.00
Ch=N31°30'43" E
335.99

Δ=86°00'00"
R=170.00
Ch=N68°12'29" E
231.88

4.020 Acres
Ohio Holding Co.
24.386 Acres
ORV 14447G11

Holding Corp. of Ohio
Original 14.730 Acres
ORV 14447G15

11.780 Acres

Washington Twp.
Brd. of Trustees
2.914 Acres
ORV 12406D09

Earl O. Grey
2.50 Acres
D.B.3548, Pg.876

Dublinshire Section 3
P.B.76, Pg.64

Dunmere Associates,
A Limited Partnership
Original 17.152 Acres
ORV 12856A14

- = Fra. Co. Eng. Mon. Fnd.
 - ▲ = R.R. Spk. Fnd.
 - △ = RR Spk. Set
 - = I.P. Fnd.
 - = I.P. Set
- I.P. Set are 3/4" O.D. Iron Pin
30" long w/cap inscribed CEA.

This drawing was prepared from an actual field survey by Civil Engineering Assoc., Inc. The basis of bearing is S 68°47'34" E for the centerline of Brand Road, and all other bearings calculated from this meridian.



Jeffrey A. Miller
Jeffrey A. Miller P.S. #7211
Civil Engineering Associates, Inc.

A-1-E
0-107-D