

EVANS MECHWART HAMBLETON & TILTON, INC.

CONSULTING ENGINEERS — SURVEYORS
GAHANNA, OHIO

SURVEY OF ACREAGE PARCELS LOCATED IN SECTION 1, TOWNSHIP 1, RANGE 19 UNITED STATES MILITARY LANDS CITY OF COLUMBUS, FRANKLIN COUNTY, OHIO

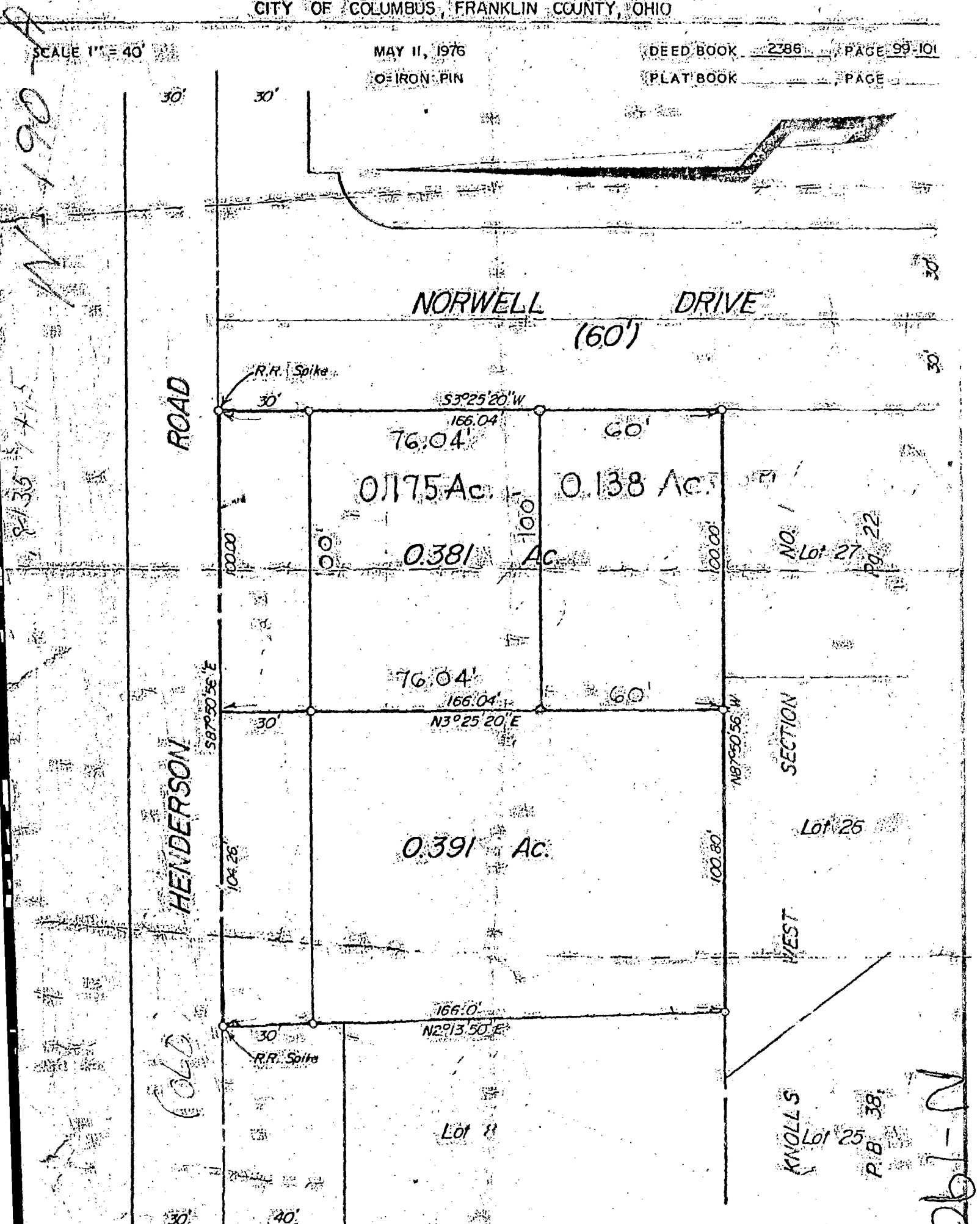
SCALE 1" = 40'

MAY 11, 1976

DEED BOOK 2386 PAGE 99-101

○ = IRON PIN

PLAT BOOK PAGE



We hereby certify that the foregoing plat was prepared from an actual survey of the premises and shows the location of the boundaries.

EVANS MECHWART HAMBLETON & TILTON, INC.

E. E. Melder
Registered Surveyor No. 1965