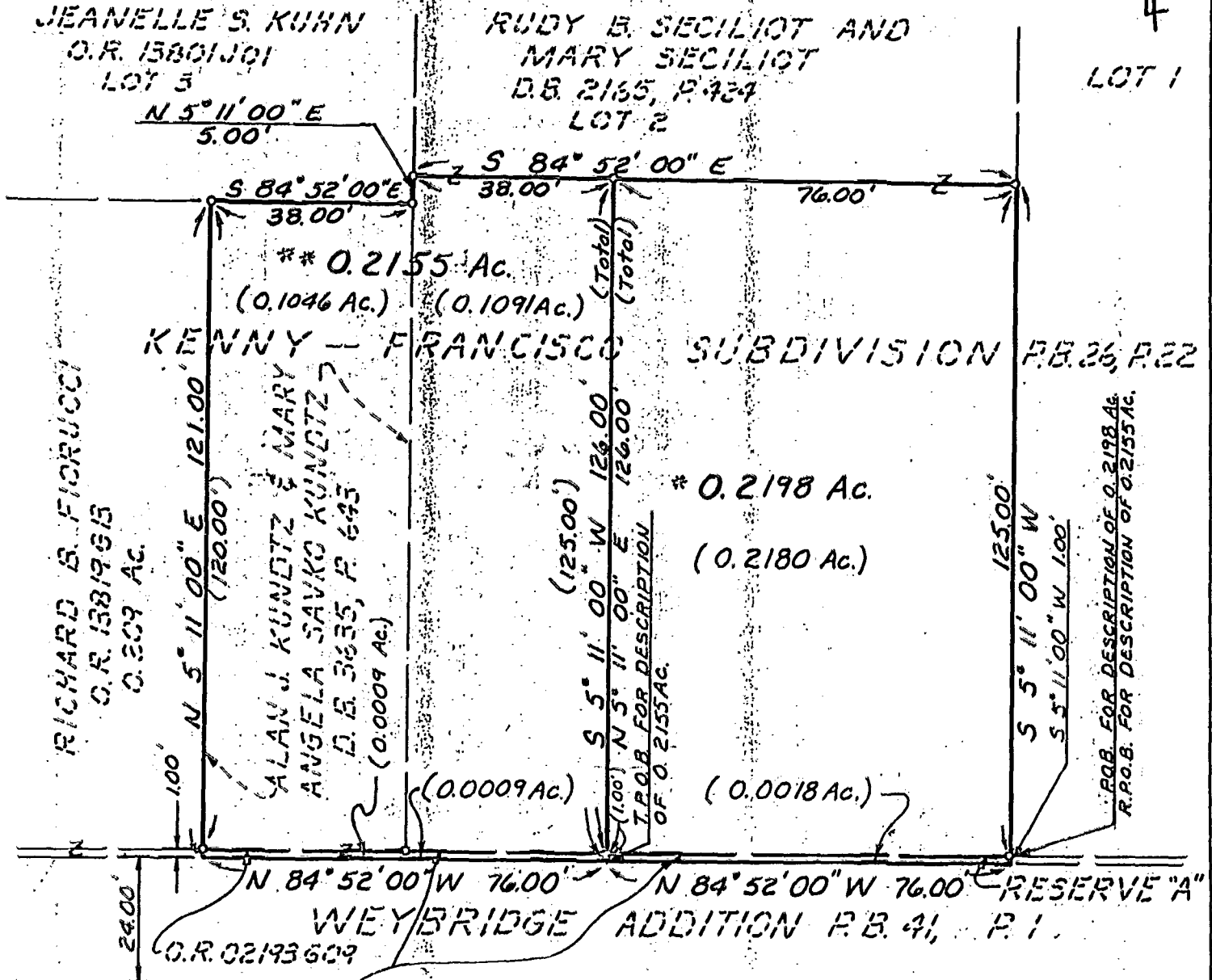


# BAUER, DAVIDSON & MERCHANT, INC.

CONSULTING ENGINEERS

255 GREEN MEADOWS DRIVE SOUTH P.O. BOX 370 POWELL OHIO 43065

MAP SHOWING PROPOSED DIVISION OF THE SOUTHERLY PORTION OF LOTS 2 AND 3 OF KENNY-FRANCISCO SUBDIVISION AND PART OF RESERVE "A" OF WEYBRIDGE ADDITION LOCATED NORTH OF WEYBRIDGE ROAD AND WEST OF KENNY ROAD, IN THE CITY OF COLUMBUS, COUNTY OF FRANKLIN, STATE OF OHIO



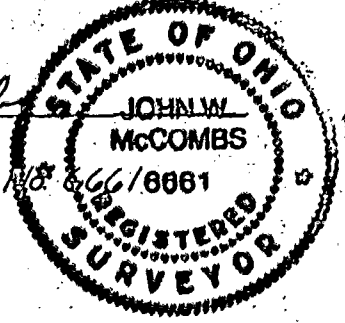
M.G. REALTY CO. WEYBRIDGE ROAD 49'  
D.B. 3046, P. 235

We hereby state that this map was prepared from information obtained from an actual field survey conducted by Bauer, Davidson & Merchant, Inc. in May of 1990.

The bearings given in this map are based on an assumed meridian.

BAUER, DAVIDSON & MERCHANT, INC.  
Consulting Engineers

By John W. McCombs  
John W. McCombs  
Professional Surveyor



- ~ 3/4 inch (I.D.) Iron Pipe (set)
- P.O.B. ~ Point of Beginning
- R.P.O.B. ~ Reference Point of Beginning
- T.P.O.B. ~ True Point of Beginning

Scale: 1" = 30' Order No. 1766-90  
June 4, 1990

(See Sheet 3 for situate of each tract) Sheet 1 of 3