

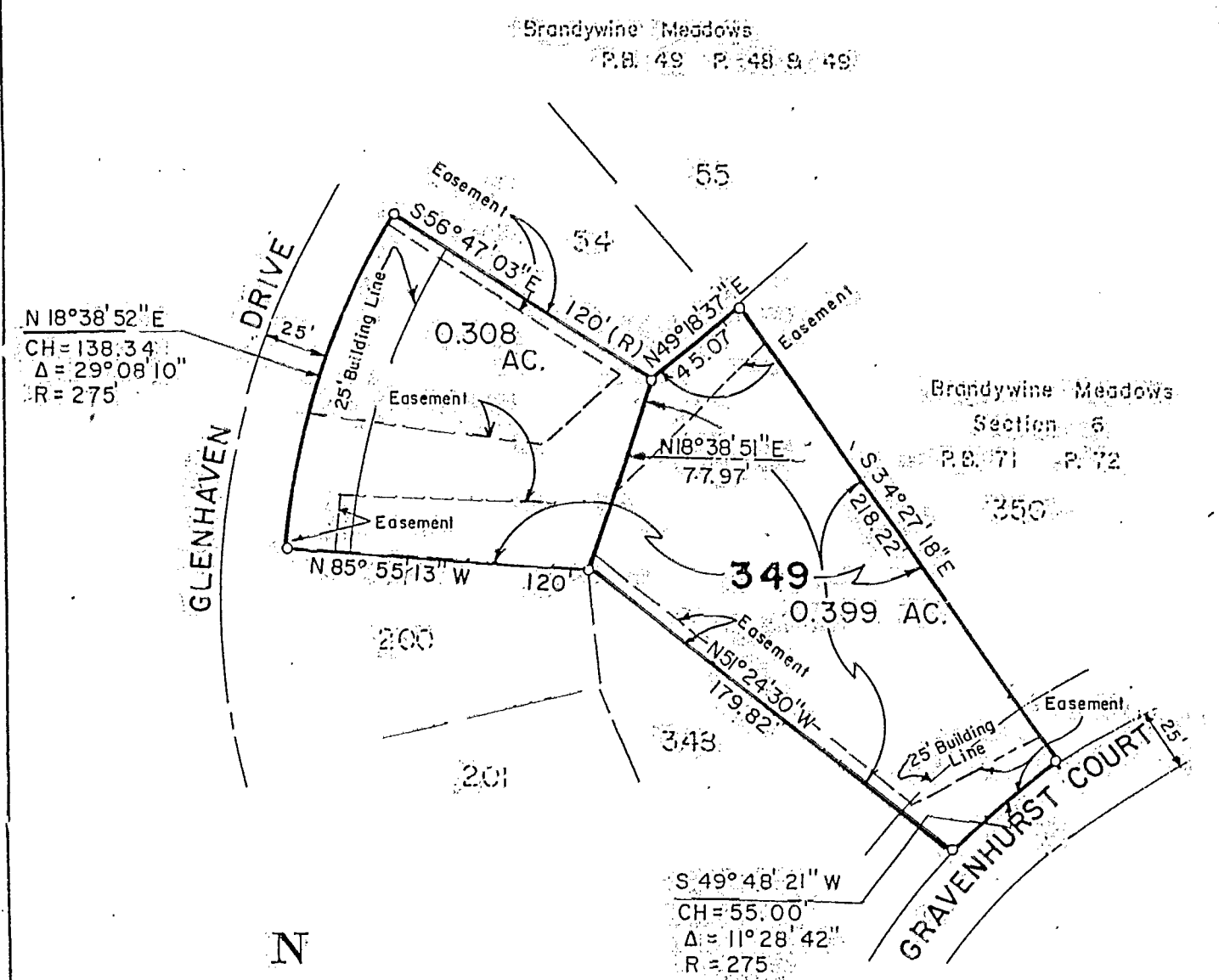


SURVEY OF PROPOSED SPLIT OF LOT 349 OF BRANDYWINE MEADOWS SECTION 6 184357300 LOT 8, SOUTHWEST QUARTER OF TOWNSHIP 2, RANGE 17 UNITED STATES MILITARY LANDS CITY OF COLUMBUS, COUNTY OF FRANKLIN, STATE OF OHIO

SCALE: 1" = 60' 0 = Iron Pin

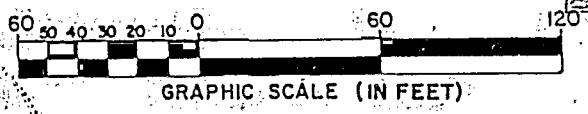
December 18, 1990

RECORD REFERENCES PB 71, P. 72



As of December 18, 1990, all the iron pins shown hereon have not been set.

The bearings shown hereon are based on the same meridian as the bearings shown on the recorded plat of Brandywine Meadows Section 6.



GRAPHIC SCALE (IN FEET)

E.M.H.&T. INC.

By *Felix Brown*
Professional Surveyor, No. 5561



RECORDED IN P.B. 71 P. 72