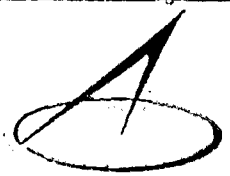


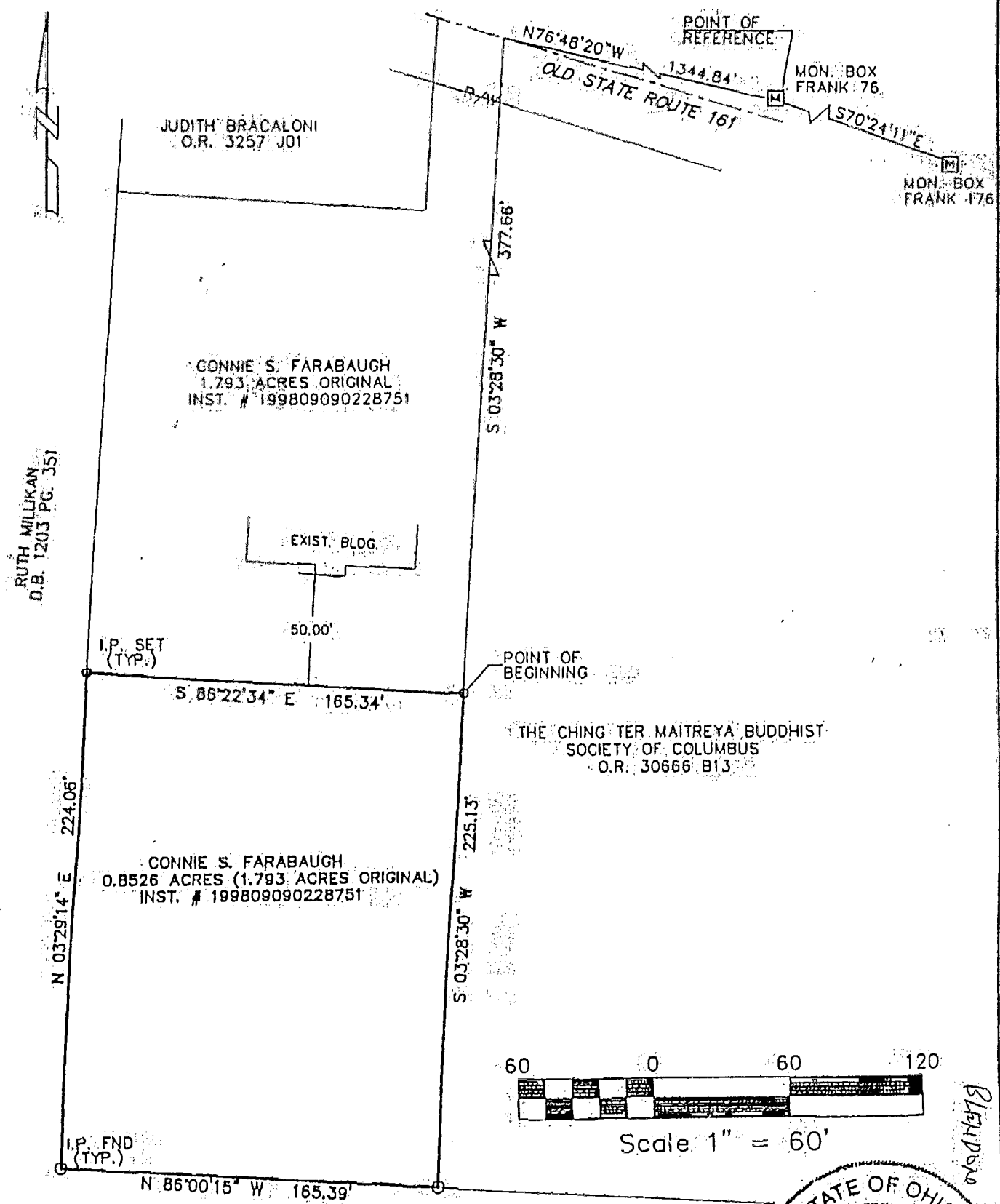
8435-7575



FRANKLIN CONSULTANTS, INC.
2700 EAST DUBLIN-GRANVILLE ROAD, SUITE 500
COLUMBUS, OHIO 43231
(614) 891-6000 FAX: (614) 891-6003
E-MAIL: mail@franklinconsultants.com

SITUATED IN THE STATE OF OHIO, COUNTY OF FRANKLIN, CITY OF COLUMBUS, THIRD QUARTER TOWNSHIP 2, RANGE 17, UNITED STATES MILITARY LANDS.

THE BASIS OF BEARING WAS TRANSFERRED FROM A GPS SURVEY OF FRANKLIN COUNTY MONUMENTS FRANK 76 AND FRANK 176, PERFORMED BY THE FRANKLIN COUNTY ENGINEERS OFFICE, IN 1991 AND IS BASED ON THE NAD 83 OHIO STATE PLANE COORDINATE SYSTEM, SOUTH ZONE AND DETERMINES THE CENTERLINE OF STATE ROUTE 161 AS BEING SOUTH 70° 24' 11" EAST.



RUTH MILLIKAN
D.B. 1203 PG. 351

JUDITH BRACALONI
O.R. 3257 J01

CONNIE S. FARABAUGH
1.793 ACRES ORIGINAL
INST. # 199809090228751

EXIST. BLDG.

I.P. SET
(TYP.)

POINT OF BEGINNING

THE CHING TER MAITREYA BUDDHIST
SOCIETY OF COLUMBUS
O.R. 30666 B13

CONNIE S. FARABAUGH
0.8526 ACRES (1.793 ACRES ORIGINAL)
INST. # 199809090228751

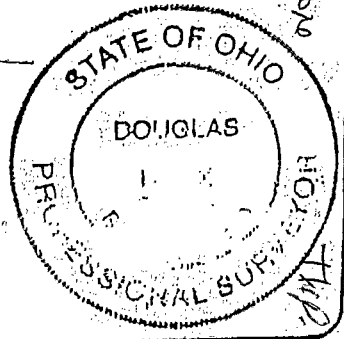
I.P. FND
(TYP.)

MINERVA PARK NORTH
P.B. 36, PG. 42

DRAWN BY: N.G.G.
DATE: 11-22-99
DWG. NO.: 1099
APPROVED BY: D.R.H.

Douglas R. Hock
DOUGLAS R. HOCK
P.S. NO. 7661

12/2/99
DATE



BLEPDSM

0-3-D