

15200000
182107500

HOCKADEN-LIPES-ROUSCULP, INC.
CONSULTING ENGINEERS
883 N. CASSADY AVENUE
COLUMBUS, OHIO

0-99-G

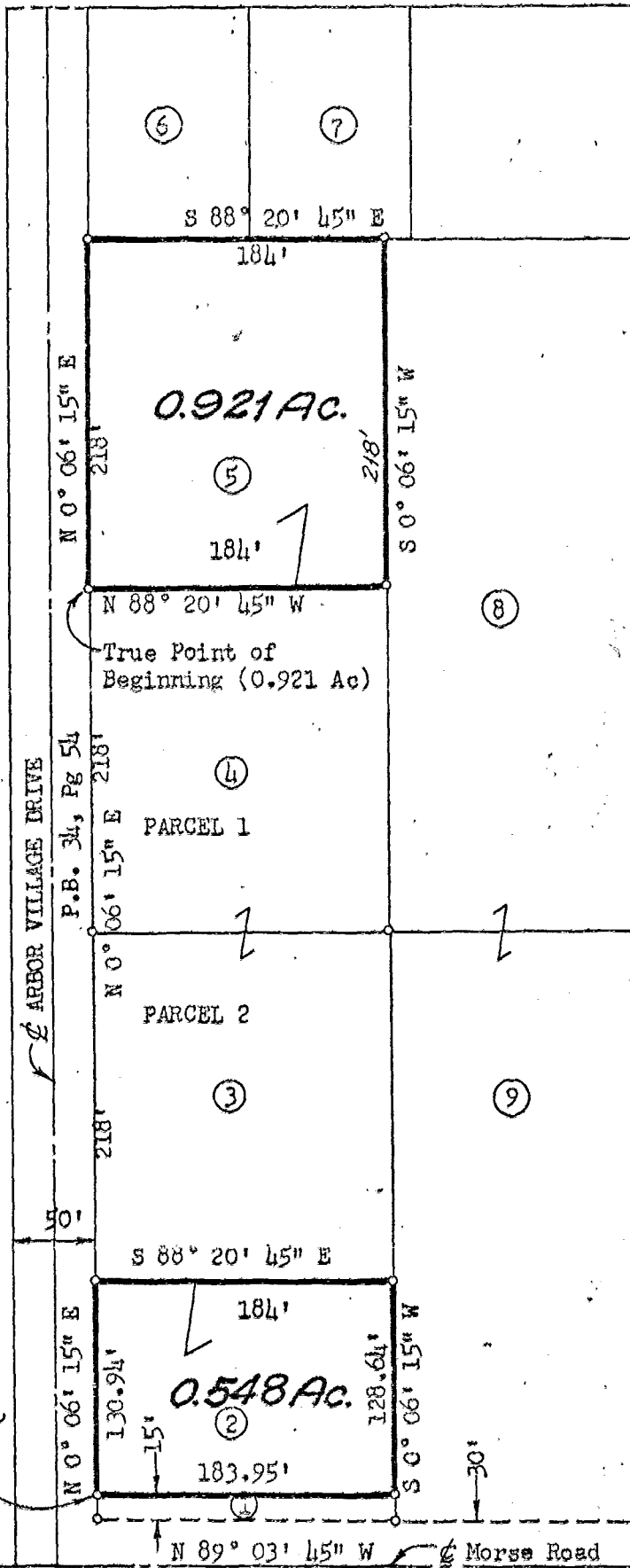
PLAT OF A 0.921 ACRE TRACT
AND A 0.548 ACRE TRACT
NORTH OF MORSE ROAD
EAST OF ARBOR VILLAGE DRIVE
COLUMBUS, OHIO



050
0997
1973
16A
57
E
115
020
120
3140

OWNERSHIPS

- ① City of Columbus
184' x 15'
DB 2427, Pg 485
- ② Jessie D. DeGraw
4.47 Acres
DB 1695, Pg 608
- ③ Carl Wriedt, et.al. (4)
0.921 Acres
DB 3376, Pg 338
- ④ Carl Wriedt, et al. (4)
0.921 Acres
DB 3376, Pg 338
- ⑤ Jessie D. DeGraw
4.47 Acres
DB 1695, Pg 608
- ⑥ Graceland Investment Compan
0.333 Acres
DB 2405, Pg 512
- ⑦ Marmon Investment Company
0.328 Acres
DB 2405, Pg 514
- ⑧ North Community Evangelical
Lutheran Church
1.47 Acres
DB 1550, Pg 237
- ⑨ North Community Evangelical
Lutheran Church
2.85 Acres
DB 2008, Pg 92



Beginning Point (0.548 Ac.)
Reference Point (0.921 Ac.)

We hereby certify that the foregoing plat was prepared from an actual survey of the premises.

SCALE 1" = 100'

DATE: 11-9-73	31997
REVISED DATES	ORDER NUMBERS

HOCKADEN-LIPES-ROUSCULP, INC.

By: *Phillip E. Mathys*
Registered Surveyor #5559

SURV'D.	DRAWN	CHECKED
Herb	Phil	