

8/607500

# SURVEY OF ACREAGE PARCELS

LOCATED IN QUARTER TOWNSHIP 3, TOWNSHIP 2, RANGE 13,  
UNITED STATES MILITARY LANDS  
CITY OF COLUMBUS, FRANKLIN COUNTY, OHIO

0-99-E  
SHARON TVG?

Billie E. & Ralph E. Hazelbaker  
O. R. 11466E13  
O. R. 11466E15  
O. R. 11466E17  
O. R. 11466F01

11.582 Ac.

1.042 Ac.

1.042 Ac.

CITY OF COLUMBUS, FRANKLIN COUNTY, OHIO

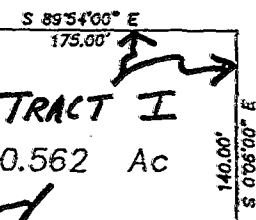
Robert N. & Olga R. Yarrington  
1.2945 Ac.  
D. B. 2599, Pg. 93

N 0°06'00" W 140.00'

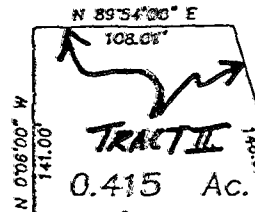
R/W 60.00'

141.45'

**TRACT I**  
0.562 Ac



**TRACT III**  
Richard J. Solove &  
John J. Chester  
2.849 Ac.  
O.R. 5722H07



**TRACT II**  
0.415 Ac.

Olentangy Limited  
0.898 Ac.  
O. R. 5472A01

R. L. Schirtzinger  
0.892 Ac.  
D. B. 3111, Pg. 9

OLENTANGY RIVER ROAD

NORTH

S 89°54'00" W City of Columbus 613.96'  
O.R. 4968E09  
O.R. 4968E11

**BETHEL ROAD**

277.62'

148.34'

284.05'

N 89°54'00" W 60.70'

431.16'  
S 89°54'00" W

Surveyed & Platted  
By  
**EVANS, MECHWART, HAMBLETON, & TILTON INC.**  
CONSULTING ENGINEERS AND SURVEYORS  
170 MILL STREET  
GAHANNA, OHIO 43230  
614/471-5150

By Thomas D. Sibbalds  
Thomas D. Sibbalds  
Registered Surveyor No. 5908

SCALE: 1" = 100' MAY 7, 1993



GRAPHIC SCALE 1" = 100'

Exhibit "A",  
continued  
Page Five of Five  
(Depiction of Tracts  
I, II and III)

**NOTE:**

The bearings shown hereon are based on the same meridian  
as the deed of record in Official Record 5723A03.