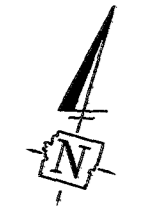


SURVEY OF A 0.012 ACRE TRACT, QUARTER TOWNSHIP 4, TOWNSHIP 2 NORTH, RANGE 19 WEST, UNITED STATES MILITARY LANDS

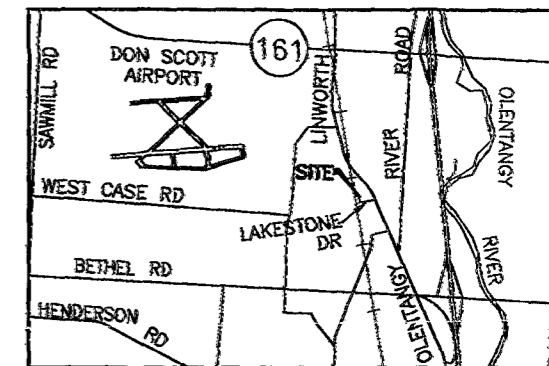
TOWNSHIP OF PERRY,
FRANKLIN COUNTY, OHIO



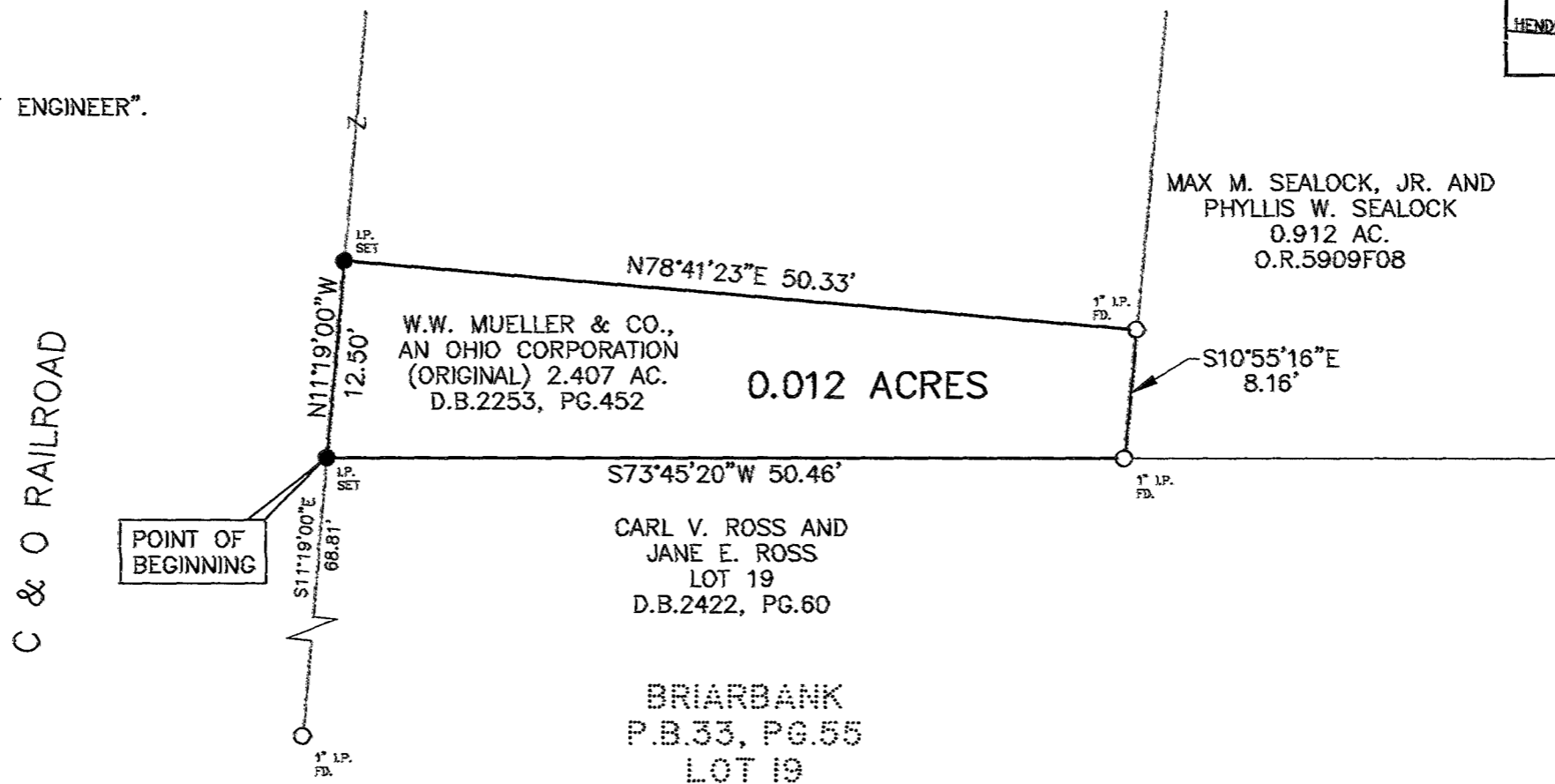
GRID NORTH



NOTE:
I.P.'S SET ARE 5/8" REBAR WITH YELLOW
PLASTIC CAPS STAMPED "FRANKLIN COUNTY ENGINEER".



LOCATION MAP



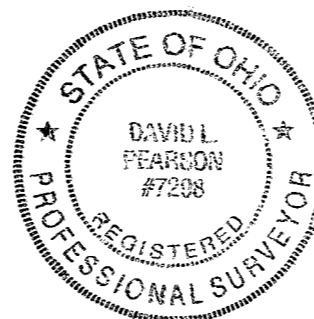
BASIS OF BEARINGS:

THE BEARINGS SHOWN HEREON ARE BASED ON THE BEARING (N11°19'00"W) ALONG THE WESTERLY LINE OF LOT 19 AS SHOWN IN THE PLAT OF RECORD BRIARBANK AS RECORDED IN PLAT BOOK 33, PAGE 55, RECORDER'S OFFICE, FRANKLIN COUNTY, OHIO.

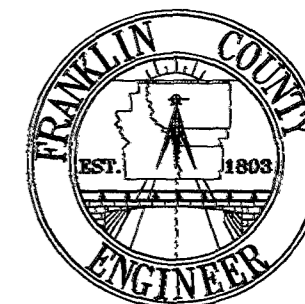
THIS PLAT WAS PREPARED FROM AN ACTUAL FIELD SURVEY PERFORMED BY THE FRANKLIN COUNTY ENGINEER'S OFFICE, ALONG WITH PUBLIC RECORDS ON FILE IN THE FRANKLIN COUNTY RECORDER'S OFFICE AND THE FRANKLIN COUNTY ENGINEER'S OFFICE

David L. Pearson
DAVID L. PEARSON
OHIO REGISTERED SURVEYOR NO.7298

6-22-99
DATE



81357550



DATE: 06-18-99		DRAWING: 216-221104	
		DRAWN BY: DKT	
REVISIONS			
DATE	DESCRIPTION	BY	