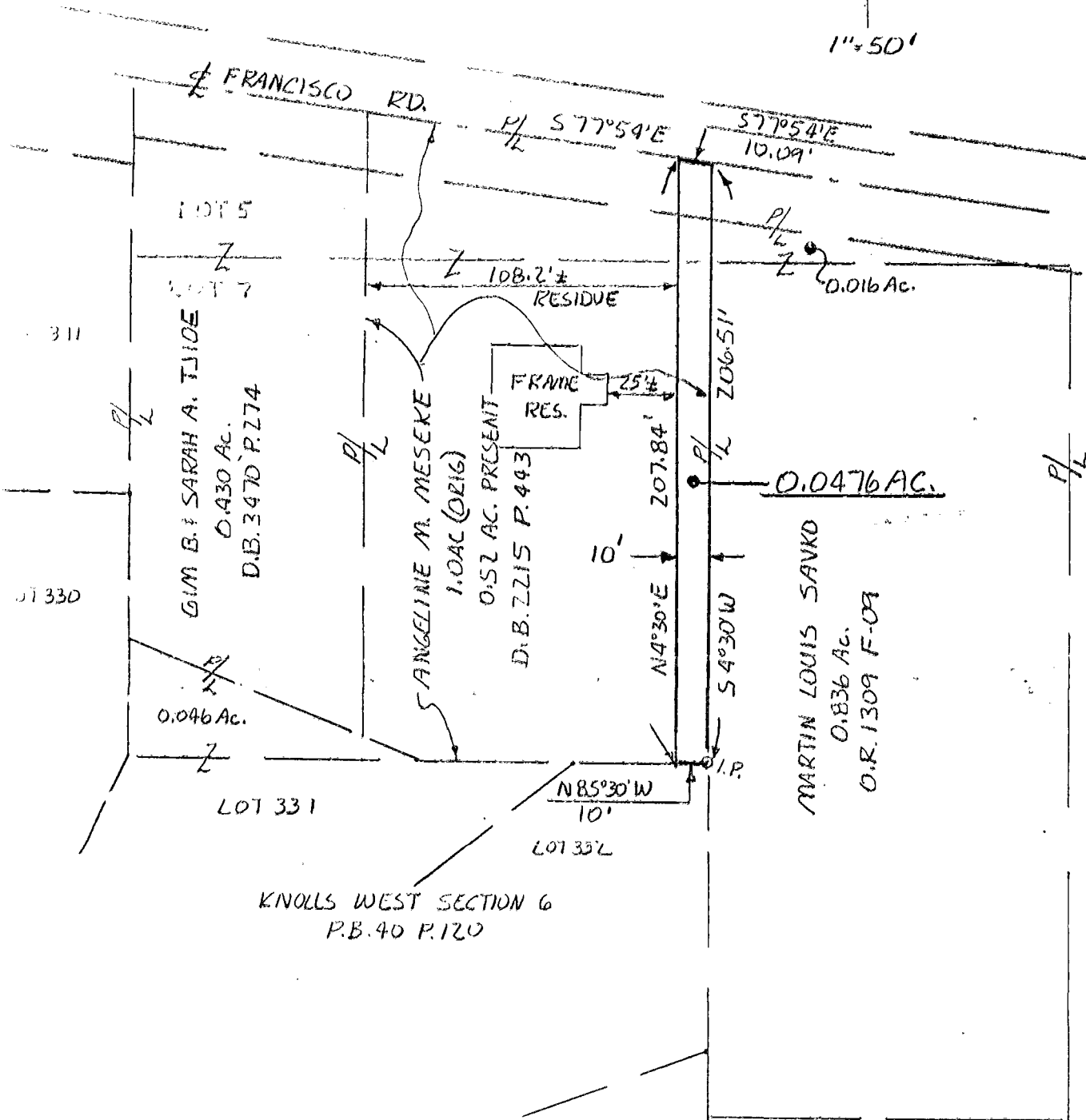
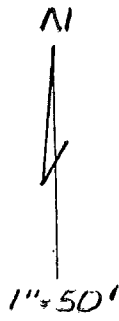


PLAT OF A 0.0476 ACRE TRACT  
 SOUTH OF FRANCISCO ROAD, EAST OF REED ROAD  
 COLUMBUS, OHIO

067-1



WE DO HEREBY CERTIFY THAT WE HAVE PREPARED THIS PLAT  
 BASED ON A SURVEY PLAT, DATED OCT. 7, 1959, PREPARED BY E.M.H. ST. JNG.  
 OF THE 1 ACRE TRACT OF WHICH THIS TRACT IS A PART.

S. D. POMEROY AND ASSOCIATES, INC.  
 BY Walter J. Goss DATE 3/25/86  
 PROFESSIONAL SURVEYOR #6152