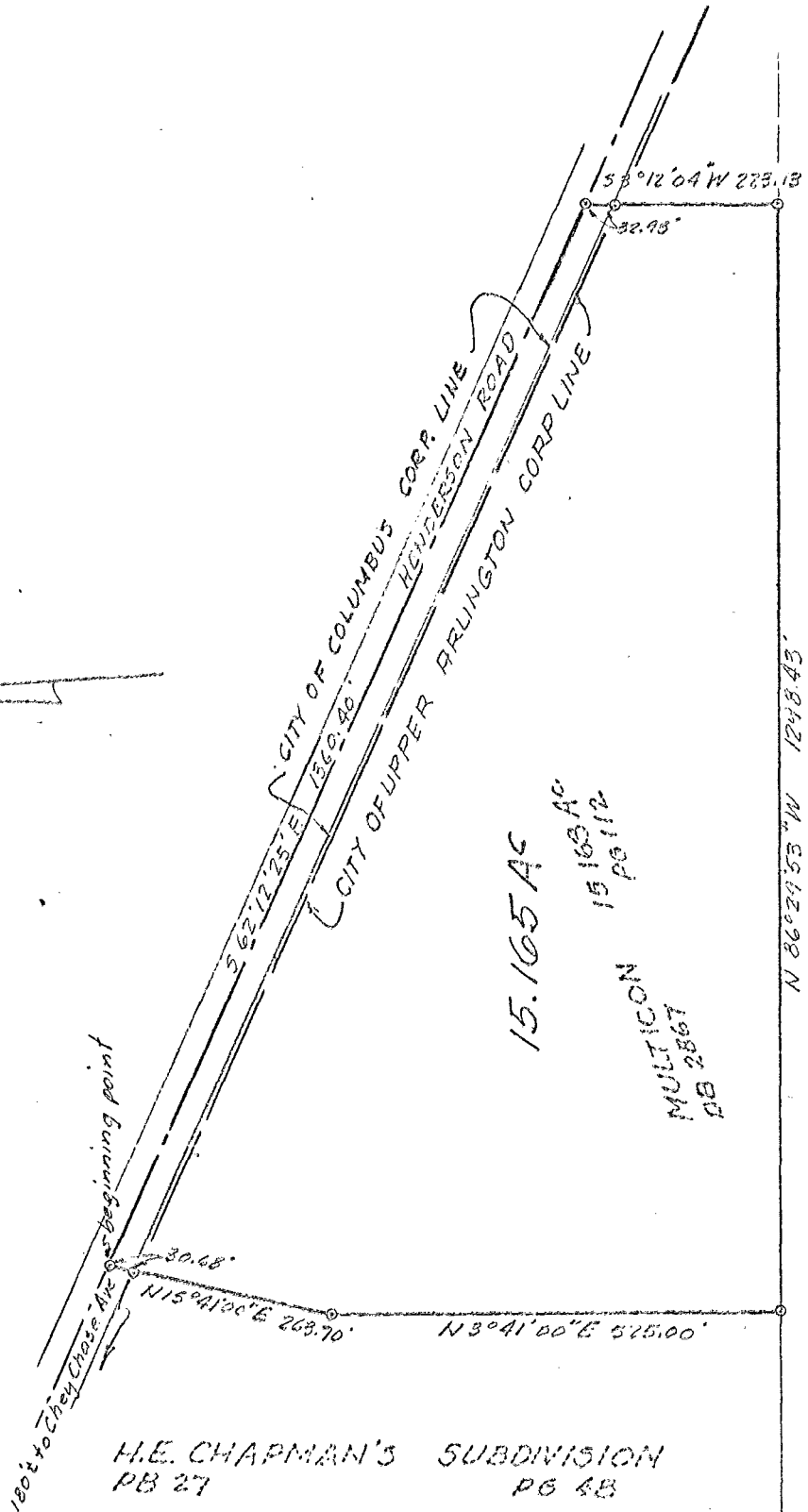


ROBERT L. HENNING, INC.
 CONSULTING ENGINEERS
 257 1/2 N. HIGH ST.
 COLUMBUS, OHIO

SURVEY PLAT
 OF 15.165 AC TRACT OF LAND
 ON HENDERSON ROAD FOR
 MULTICON

PERKY TWP
 0-68



96557524 06607500
 06557475 0607475

H.E. CHAPMAN'S SUBDIVISION
 PB 27 PG 48

15.165 AC
 15 165 AC
 PG 112
 MULTICON
 PB 2867

MARY F. ROGERS
 PB 1953 PG 558

o - iron pin

We hereby certify that the foregoing plat was prepared from an actual survey of the premises

SCALE 1" = 200'

DATE 3-19-68	P. 227
REVISED DATES	OTHER NUMBERS
2/26/71	

ROBERT L. HENNING, INC. COLUMBUS, OHIO

By.....
 Registered Surveyor

