



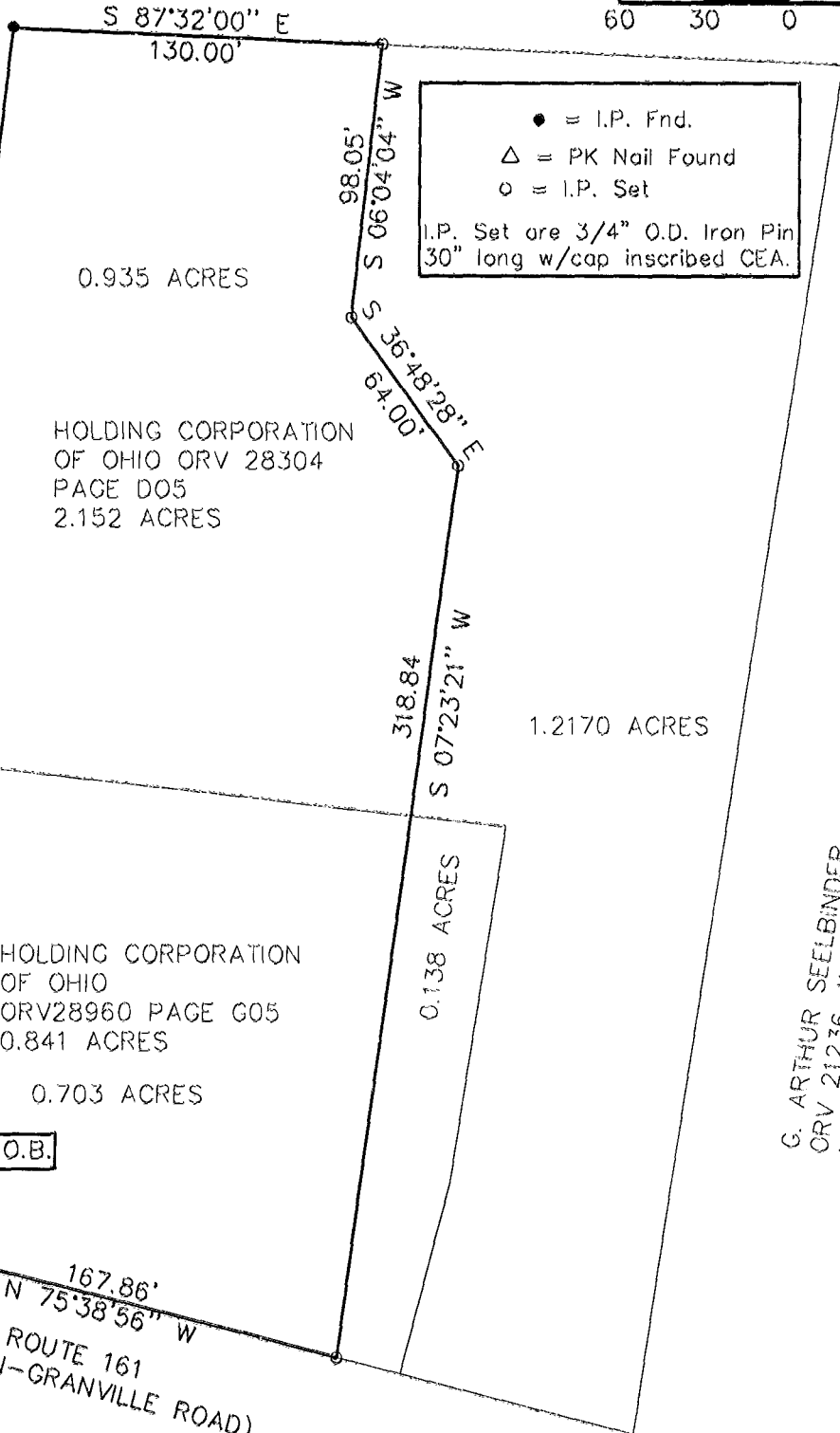
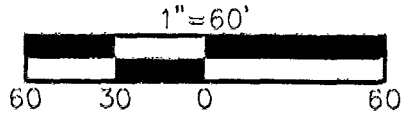
CIVIL ENGINEERING
ASSOCIATES

9015
Antares Avenue
Columbus, Ohio 43240
Tel. 614.433.9015
Fax 614.433.9513

1.639 Acres

Situated in the State of Ohio, County of Franklin,
City of Columbus, in the Quarter Township 4,
Township 2, Range 18, United States Military Lands.

FINANCIAL LAND CORPORATION
ORV 15826 PAGE A11
3.50 ACRES



COLUMBUS PIZZA PARTNERS
ORV 1198 PAGE D01
1.536 ACRES

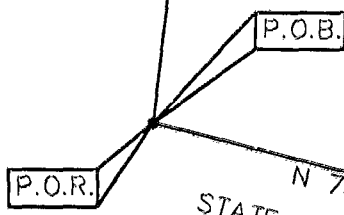
N 06°05'25" E
431.35

HOLDING CORPORATION
OF OHIO ORV 28304
PAGE D05
2.152 ACRES

HOLDING CORPORATION
OF OHIO
ORV28960 PAGE G05
0.841 ACRES

0.703 ACRES

G. ARTHUR SEELBINDER
ORV 21236 J19
1.889 ACRES



167.86'
N 75°38'56" W
STATE ROUTE 161
(DUBLIN-GRANVILLE ROAD)



The bearings shown on this plat are based on the bearing of
N 75°38'56" West on the northerly right-of-way of said
State Route 161.

Maynard H. Thompson
Civil Engineering Associates, Inc.
Maynard H. Thompson, P.S.#7128
Civil Engineering Associates, Inc.

11/7/96
Date

CEA FILE NAME: S:\SHARED\95\0130\OUTBACK.DWG LAST EDITED BY GATE2 ON: 11-11-96 @ 16:15