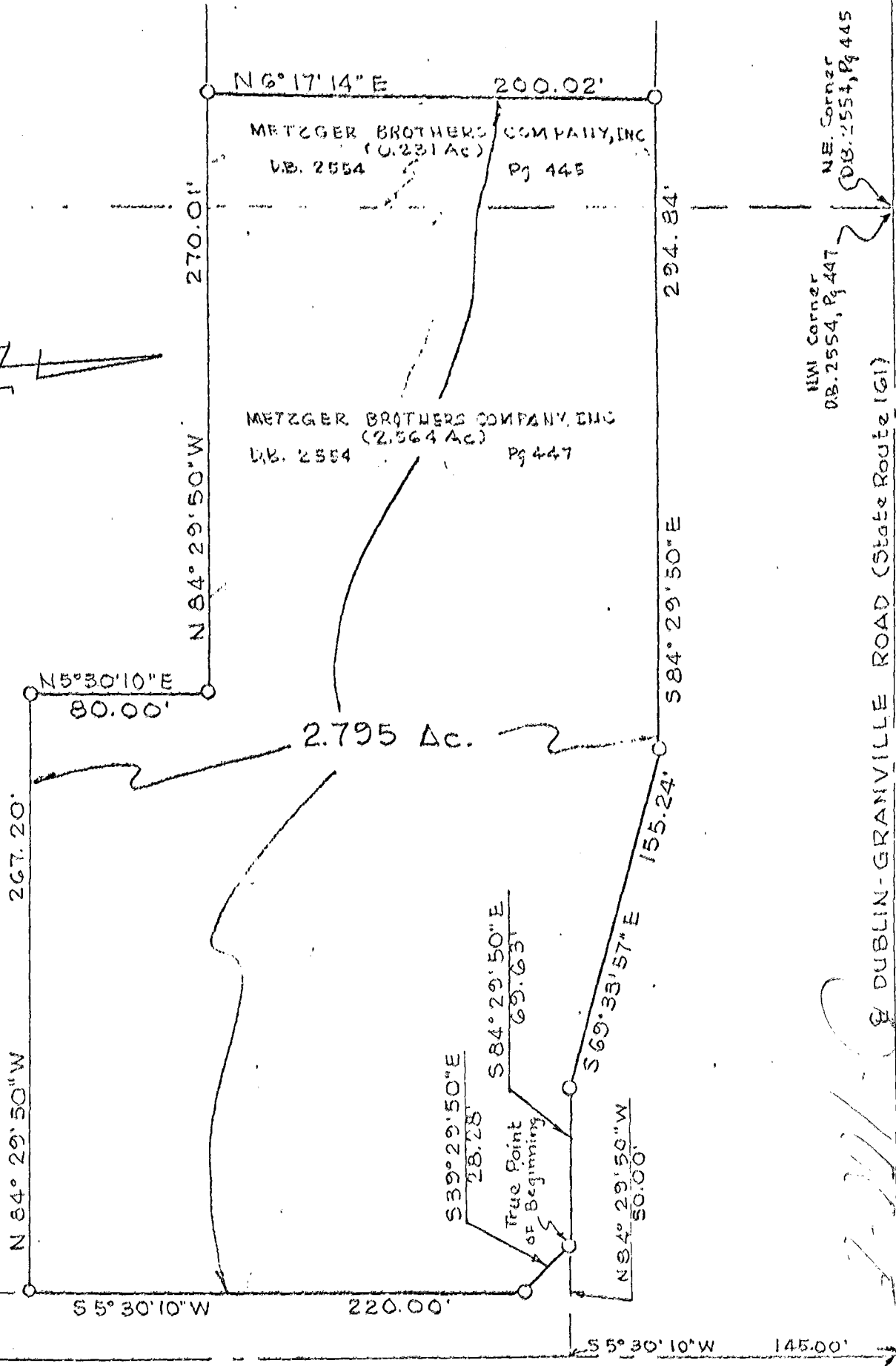
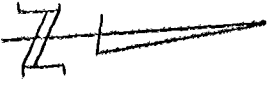


TRACT OF LAND BEING PART OF LAND SOUTH OF BEECHCROFT ROAD AND WEST OF BEECHCROFT ROAD IN COLUMBUS, OHIO

1325  
120  
088  
1973  
0100  
5003



NW Corner DB. 2554, Pg. 447  
NE Corner DB. 2554, Pg. 445

DUBLIN-GRANVILLE ROAD (State Route 161)

E BEECHCROFT ROAD (60')  
(Beechcroft Square PB. 41, Pg. 41)

Reference Point

(Situated in the State of Ohio, County of Franklin, City of Columbus, being in Quarter Township 4, Township 2, Range 18, United States Military Lands, being 2.795 acres of land more or less, 0.231 acres of said 2.795 acre tract being out of that tract of land conveyed to Metzger Brothers Company, Inc. by deed of record in Deed Book 2554, Page 445 and 2.564 acres of said 2.795 acre tract being out of that tract of land conveyed to Metzger Brothers Company, Inc. by deed of record in Deed Book 2554, Page 447, both being of record in the Recorder's Office, Franklin, County Ohio)

Scale: 1" = 60'

NOV. 1970