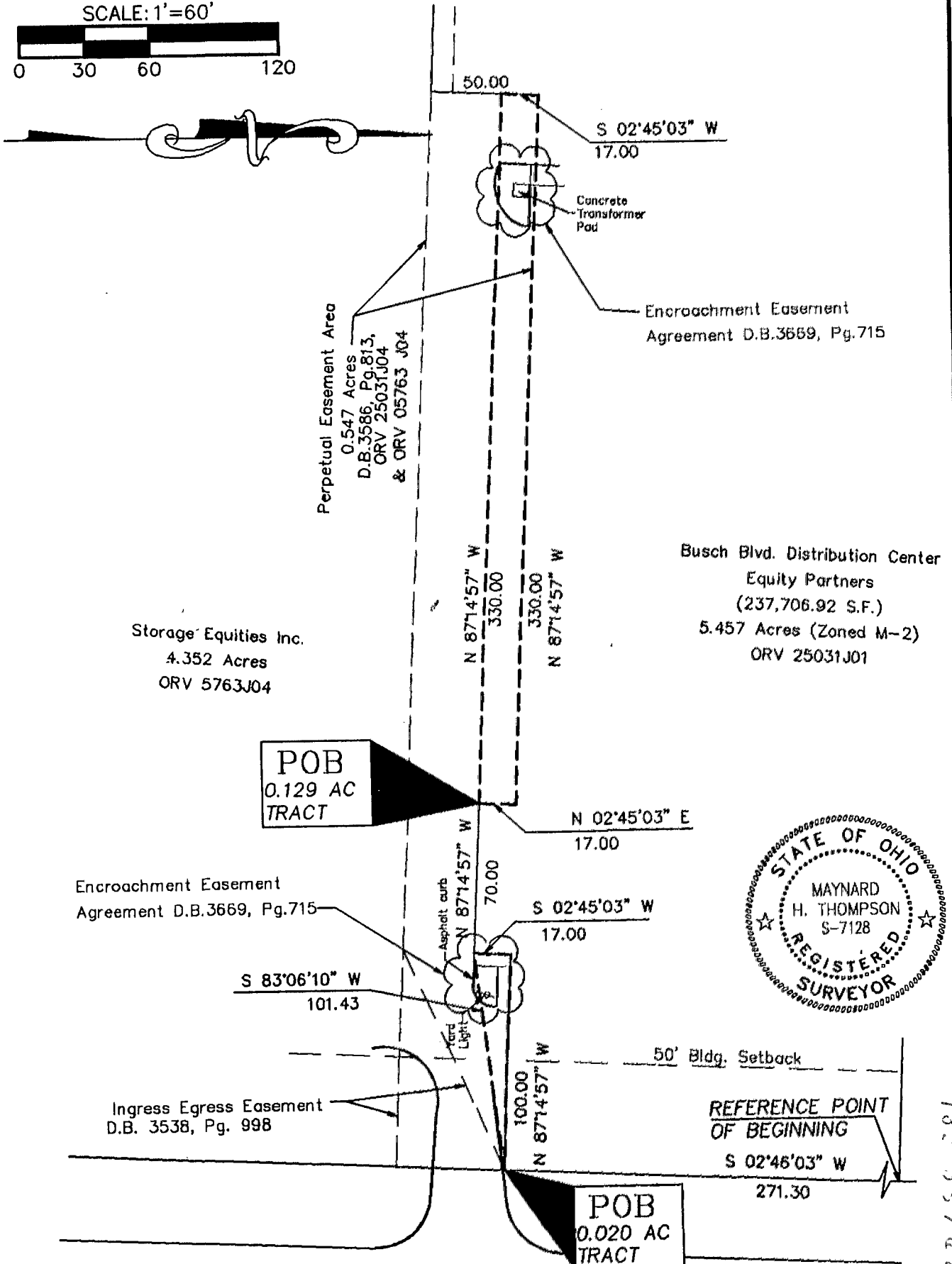
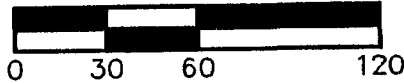


CIVIL ENGINEERING ASSOCIATES

9015 Antares Avenue Columbus, Ohio 43240 Tel. 614.433.9015 Fax 614.433.9513

0.020 Acre & 0.129 Acre Tracts

SCALE: 1"=60'



S.R.710 Busch Blvd. (150' R/W)

This drawing was prepared from an actual field survey by Civil Engineering Assoc., Inc. The basis of bearing is S 02°46'03" W for the westerly right-of-way line of S.R. 710 (Busch Blvd.).

Maynard H. Thompson, P.S. #7128 Date 7/28/95 Civil Engineering Associates, Inc.

CEA FILE NAME: S:\SHARED\94\0060\SP406EA.DWG LAST EDITED BY NEW-2 ON: 07-26-95 @ 14:11

SHARED 0-100-A 182 857 625