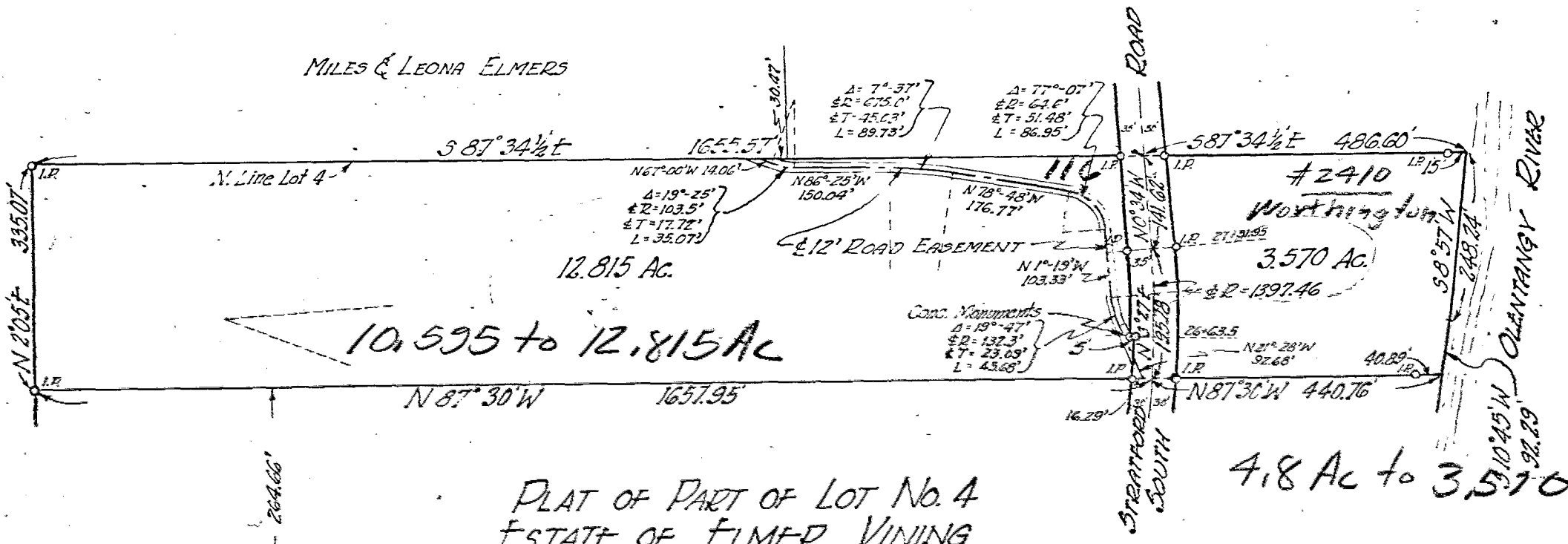
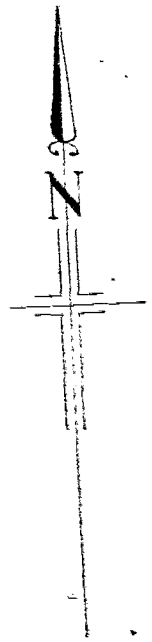


Old Par # 116

MILES & LEONA ELMERS



PLAT OF PART OF LOT No. 4
 ESTATE OF ELMER VINING
 SHARON TWP, FRANKLIN COUNTY, OHIO
 SHOWING DIVISION
 FOR

MR. EDWARD A. WERNER

SCALE - 1" = 200' JULY 2, 1951

THE JENNINGS-LAWRENCE CO
 CIVIL & MUNICIPAL ENGINEERS
 COLUMBUS, OHIO

Revised to show road easement
 Nov. 25, 1952

By *D. J. Lawrence*
 Registered Surveyor

Drawn Ch & G