

**SURVEY OF PART OF LOT "B"
 BUSCH CORPORATE CENTER**

CITY OF COLUMBUS, FRANKLIN COUNTY, OHIO

SCALE 1" = 60'

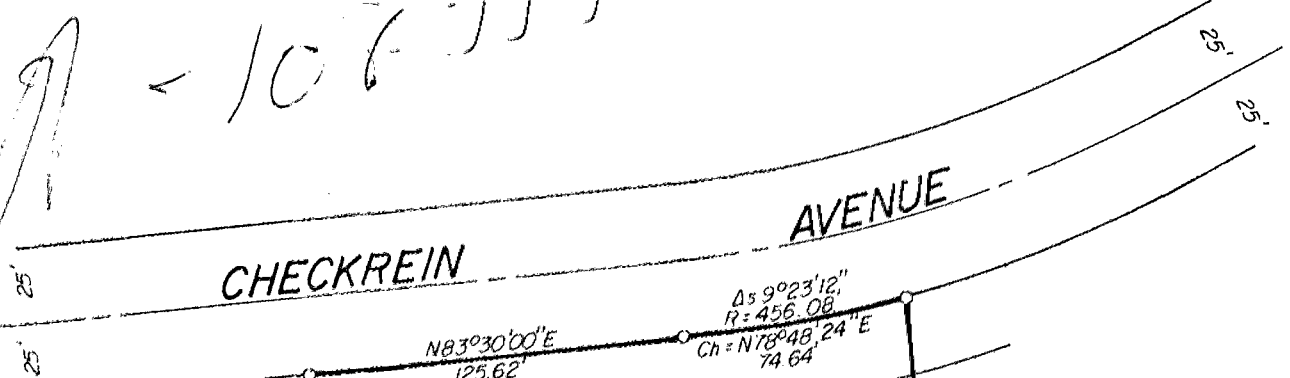
AUGUST 15, 1975

DEED BOOK _____, PAGE _____

O = IRON PIN

PLAT BOOK 43, PAGE 90-91

Handwritten: A - 106-111



Executive Distribution, Ltd.
 1.995 Ac.
 D.B. 3418, Pg. 55

1.278 Ac.

Landco, Inc.
 1.253 Ac.
 D.B. 3383, Pg. 286

Wilmington Knowlton Associates
 1.240 Ac.
 D.B. 3360, Pg. 426

State Office Supply Co.
 0.771 Ac.
 D.B. 3245, Pg. 460

We hereby certify that the foregoing plat was prepared from an actual survey of the premises and shows the location of the boundaries.

EVANS MECHWART HAMBLETON & TILTON, INC.

BY

Handwritten Signature
 Registered Surveyor No. 5485