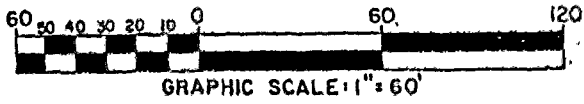


SURVEY OF ACREAGE PARCELS
 LOCATED IN QUARTER TOWNSHIP 4, TOWNSHIP 2, RANGE 19
 UNITED STATES MILITARY LANDS
 CITY OF COLUMBUS, FRANKLIN COUNTY, OHIO

SCALE 1" = 60'

April 23, 1991
 Revised November 11, 1993

RECORD REFERENCES

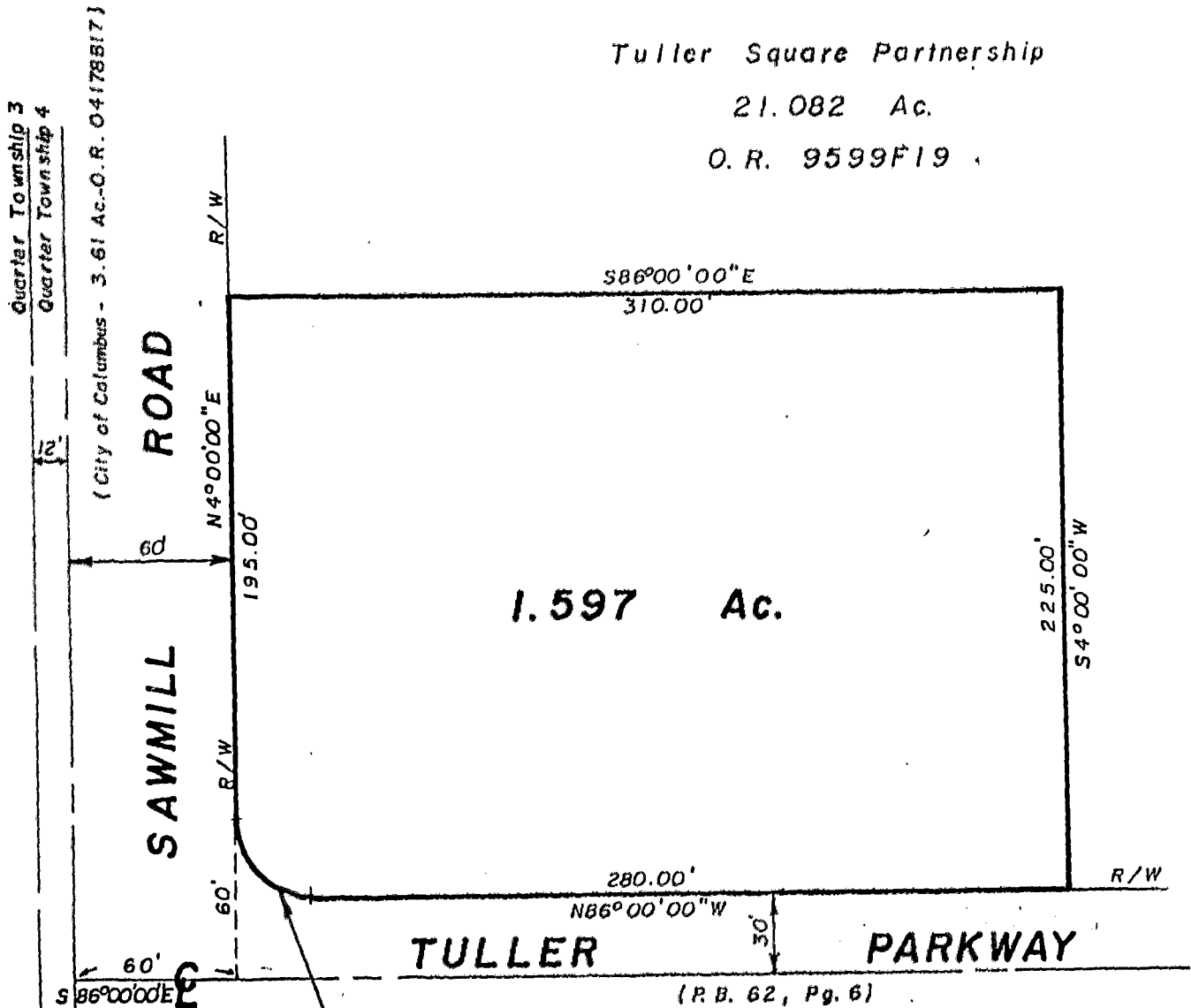


0-70-D

NOTE:

The bearings shown hereon are based on the same meridian as the recorded plat of record in P.B. 62, Pg. 6.

Tuller Square Partnership
 21.082 Ac.
 O. R. 9599F19



Ch. Brg. = N41°00'00"W
 Ch. = 42.43'
 Δ = 90°00'00"
 R = 30.00'

(P.B. 62, Pg. 6)

E.M.H.&T. INC.

By Thomas D. Sibbald
 Professional Surveyor No. 5908

0-70-D