

BAUER, DAVIDSON & MERCHANT, INC.

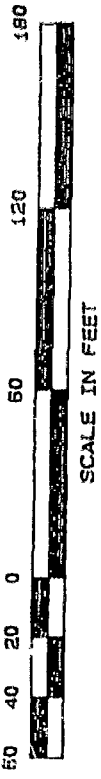
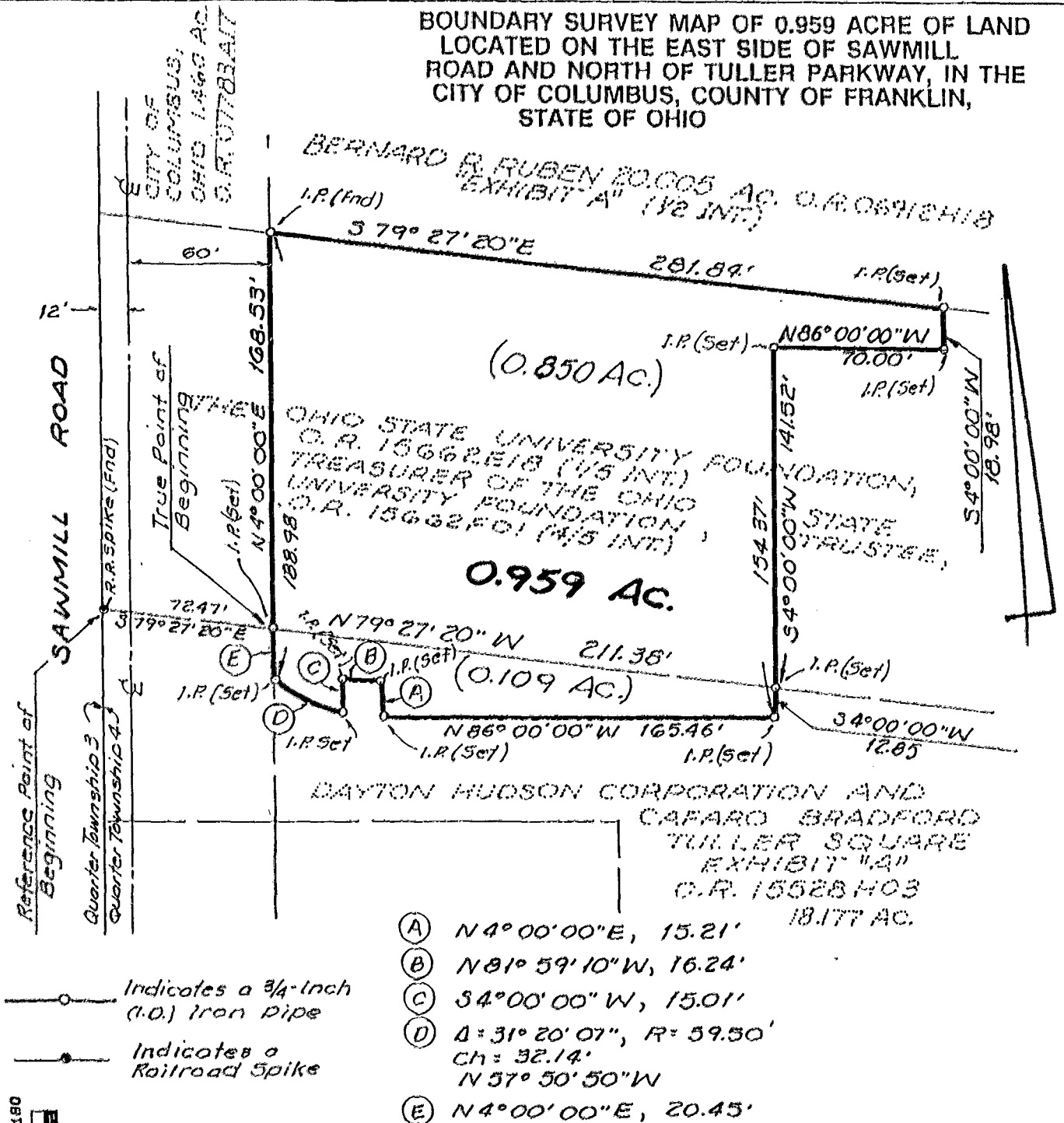
CONSULTING ENGINEERS

255 GREEN MEADOWS DRIVE SOUTH

P.O. BOX 370

POWELL OHIO 43065

BOUNDARY SURVEY MAP OF 0.959 ACRE OF LAND
LOCATED ON THE EAST SIDE OF SAWMILL
ROAD AND NORTH OF TULLER PARKWAY, IN THE
CITY OF COLUMBUS, COUNTY OF FRANKLIN,
STATE OF OHIO



Indicates a 3/4-Inch (I.O.) Iron Pipe

Indicates a Railroad Spike

- (A) N4°00'00"E, 15.21'
- (B) N81°59'10"W, 16.24'
- (C) S4°00'00"W, 15.01'
- (D) Δ = 31°20'07", R = 59.50'
Ch = 32.14'
N57°50'50"W
- (E) N4°00'00"E, 20.45'

Situated in the State of Ohio, County of Franklin, City of Columbus, being in Quarter Township 4, Township 2, Range 19, United States Military Lands, containing 0.959 acre of land, more or less, 0.850 acre of said 0.959 acre being part of that tract of land designated as "four (4) acres excepting 0.116 acres", and described in EXHIBIT A in the following two (2) deeds: 1.) Warranty Deed to THE OHIO STATE UNIVERSITY FOUNDATION, of record in Official Record 15662E18 (1/5 Interest) and 2.) Warranty Deed to the TREASURER OF THE OHIO STATE UNIVERSITY FOUNDATION, TRUSTEE, of record in Official Record 15662F01 (4/5 Interest), both being of record in the Recorder's Office, Franklin County, Ohio, 0.109 acre of said 0.959 acre being part of that 18.177 acre tract of land described in EXHIBIT "A" in the deed to Dayton Hudson Corporation and Cafaro Bradford Tuller Square, of record in Official Record 15528H03, Recorder's Office, Franklin County, Ohio.

We hereby state that this map was prepared from information obtained from an actual field survey conducted by Bauer, Davidson & Merchant, Inc. in March of 1992.

The bearings shown on this map are based on the bearing N4°00'00"E for the centerline of Sawmill Road as the same is shown on the recorded plat of the DEDICATION OF TULLER PARKWAY AND EASEMENTS, of record in Plat Book 62, Page 6, Recorder's Office, Franklin County, Ohio.

BAUER, DAVIDSON & MERCHANT, INC.
Consulting Engineers

By *Gatlis Erenpreiss*
Gatlis Erenpreiss
Professional Surveyor No. 5475

SCALE: 1" = 60'
ORDER NO. 811-92
APRIL 3, 1992
Rev. APRIL 22, 1992