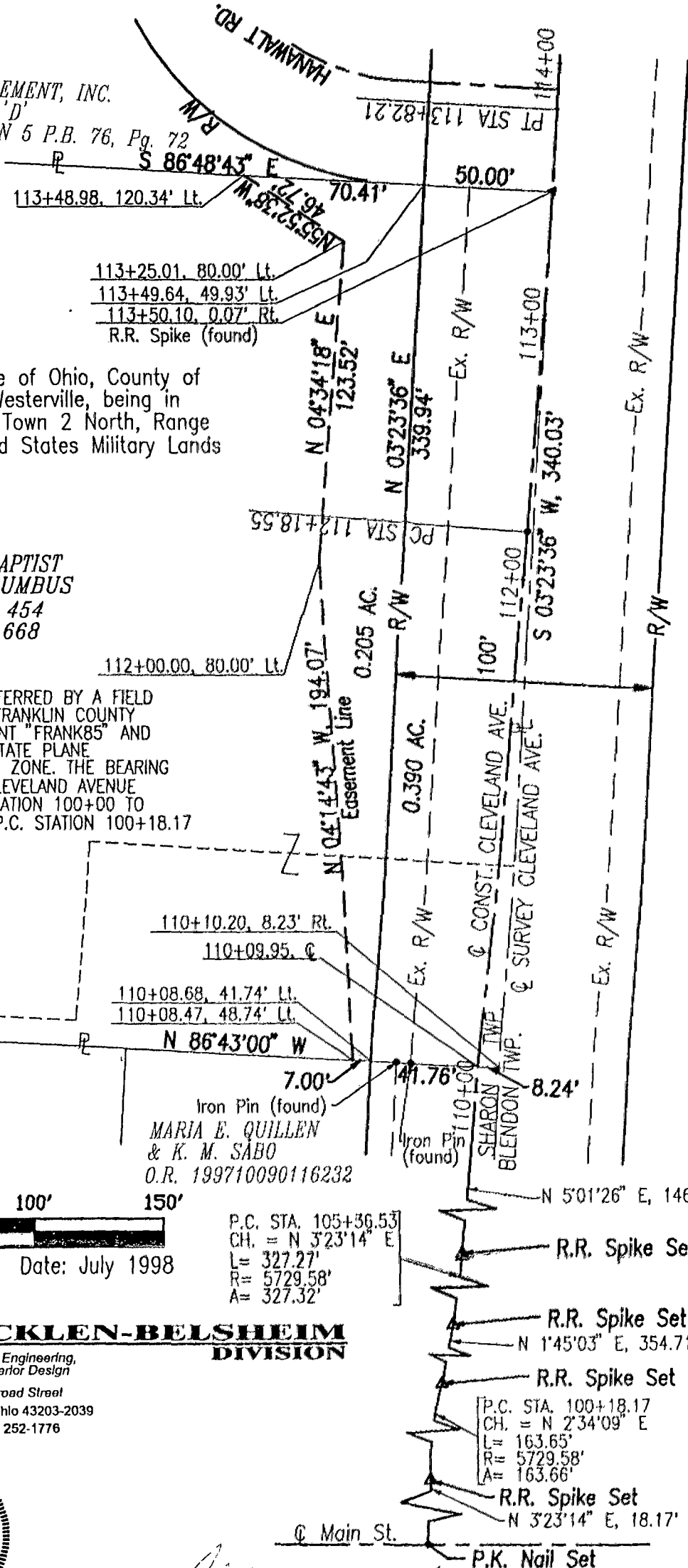


REGIONAL DEVELOPEMENT, INC.  
RESERVE 'D'  
RIVER TRACE SECTION 5 P.B. 76, Pg. 72



Situated in the state of Ohio, County of Franklin, City of Westerville, being in Quarter Township 1, Town 2 North, Range 18 West, United States Military Lands

13

CALVARY BIBLE BAPTIST CHURCH OF COLUMBUS  
D.B. 3733, Pg. 454  
D.B. 3799, Pg. 668

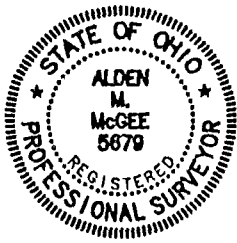
BASIS OF BEARING:  
THE BEARINGS WERE TRANSFERRED BY A FIELD TRAVERSE ORIGINATING ON FRANKLIN COUNTY SURVEY CONTROL MOUNUMENT "FRANK85" AND ARE BASED ON THE OHIO STATE PLANE COORDINATE SYSTEM, SOUTH ZONE. THE BEARING FOR THE CENTERLINE OF CLEVELAND AVENUE FROM A PK NAIL SET AT STATION 100+00 TO A RAILROAD SPIKE SET AT P.C. STATION 100+18.17 IS NORTH 3°23'14" EAST.



Scale: 1" = 50' Date: July 1998  
Prepared by:

**M/N LTD.**  
MOODY, NOLAN & LTD., INC.  
Forms of Integrity

**STICKLEN-BELSHEIM DIVISION**  
Architecture, Engineering, Planning, Interior Design  
1776 East Broad Street  
Columbus, Ohio 43203-2039  
Phone: (614) 252-1776



P.C. STA. 105+36.53  
CH. = N 3°23'14" E  
L = 327.27'  
R = 5729.58'  
A = 327.32'

P.C. STA. 100+18.17  
CH. = N 2°34'09" E  
L = 163.65'  
R = 5729.58'  
A = 163.66'

*Alden M. McGee*  
Alden M. McGee, Professional Surveyor No. 5679 Date 7-9-78

84 101 750