

BAUER, DAVIDSON & MERCHANT, INC.

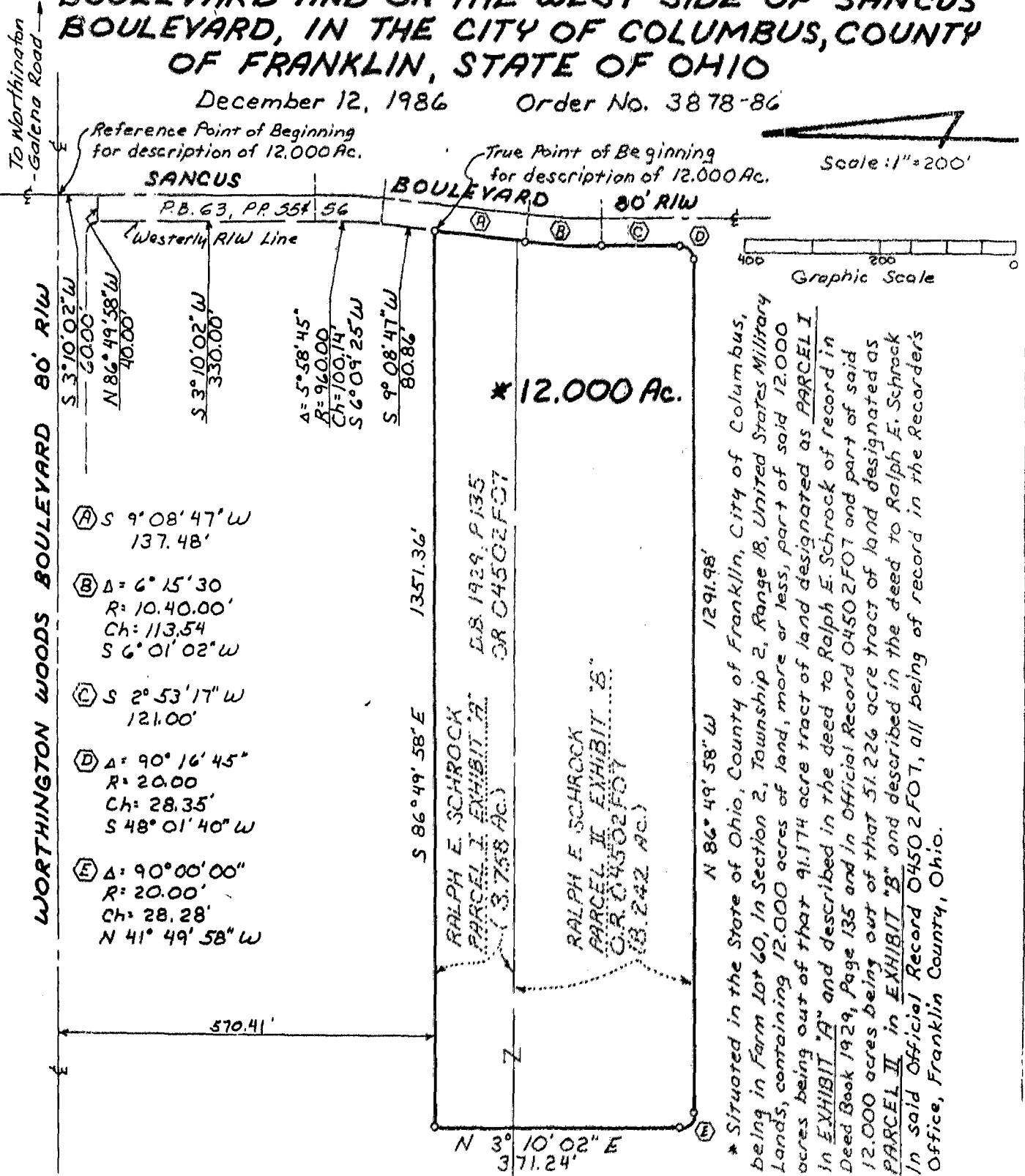
CONSULTING ENGINEERS

255 GREEN MEADOWS DRIVE SOUTH SUITE B P.O. BOX 152 POWELL, OHIO 43065

0-97-E

BOUNDARY SURVEY MAP OF 12.000 ACRES OF LAND LOCATED SOUTH OF WORTHINGTON WOODS BOULEVARD AND ON THE WEST SIDE OF SANCUS BOULEVARD, IN THE CITY OF COLUMBUS, COUNTY OF FRANKLIN, STATE OF OHIO

December 12, 1986 Order No. 3878-86



The bearings shown on this map correspond to the bearings shown on said Dedication Plat of Alta View Boulevard, Sancus Boulevard and Worthington Woods Boulevard, of record in Plat Book 63, Pages 55 and 56, Recorder's Office, Franklin County, Ohio.

We hereby certify that the above map was prepared from information obtained from an actual field survey conducted by Bauer, Davidson & Merchant, Inc. in April of 1985.

BAUER, DAVIDSON & MERCHANT, INC.
 Consulting Engineers
 By Gatis Erenpreiner
 Gatis Erenpreiner
 Professional Surveyor No. 5572