

# MYERS SURVEYING CO.

2740 East Main Street, Columbus 43209 (Bexley), Ohio

SURVEY OF 0.50 ACRES, PART OF THE THOMAS D. GILBERT 1.778 ACRE TRACE (O.R.V. 4501 F-15) AND BEING A PART OF SECTION 2, TOWNSHIP 2, RANGE 18, UNITED STATES MILITARY LANDS, COLUMBUS, FRANKLIN COUNTY, OHIO.

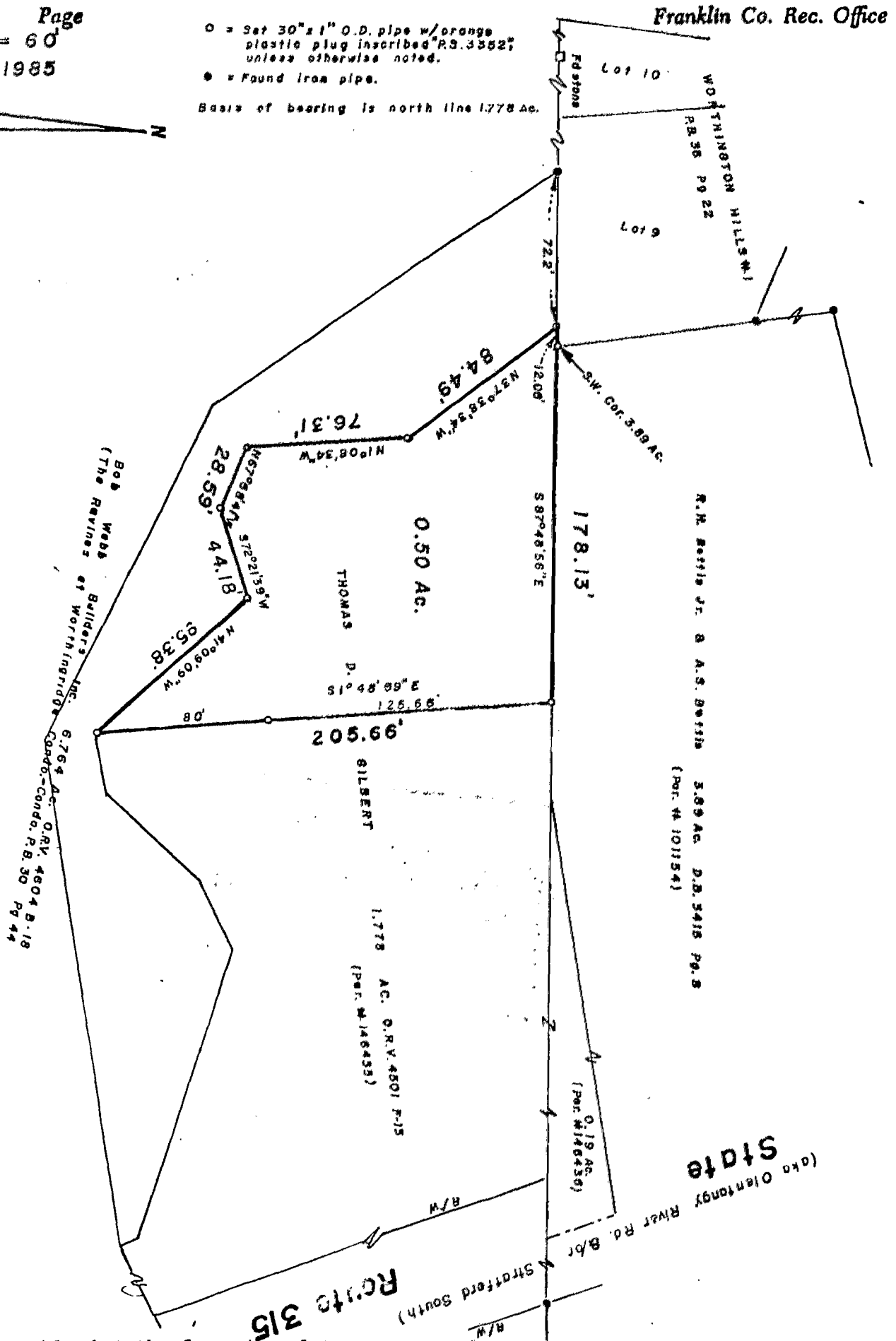
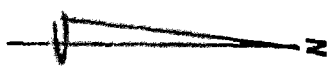
FOR

RUSSELL H. BETTIS, JR. & ANITA S. BETTIS

*O-97-C*

P.B. Page  
Scale 1" = 60'  
7 Jan. 1985

- = Set 30"x1" O.D. pipe w/orange plastic plug inscribed "R.S.3362" unless otherwise noted.
  - = Found iron pipe.
- Basis of bearing is north line 1778 Ac.



Franklin Co. Rec. Office

R.H. Bettis Jr. & A.S. Bettis  
5.89 Ac. D.B. 3418 Pg. 8  
(Per. # 10154)

0.50 Ac.  
THOMAS D. GILBERT  
1.778 AC. O.R.V. 4501 F-15  
(Per. # 146433)

Bob Webb Builders Inc.  
(The Reviver of Worthington Hills)  
6.764 Ac. O.R.V. 4504 B-18  
Caddo-Cond. R.B. 30 Pg 44

State

MYERS SURVEYING CO.

BY: *Albert Myers*  
Registered Professional Surveyor

*1/10/85*