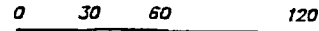
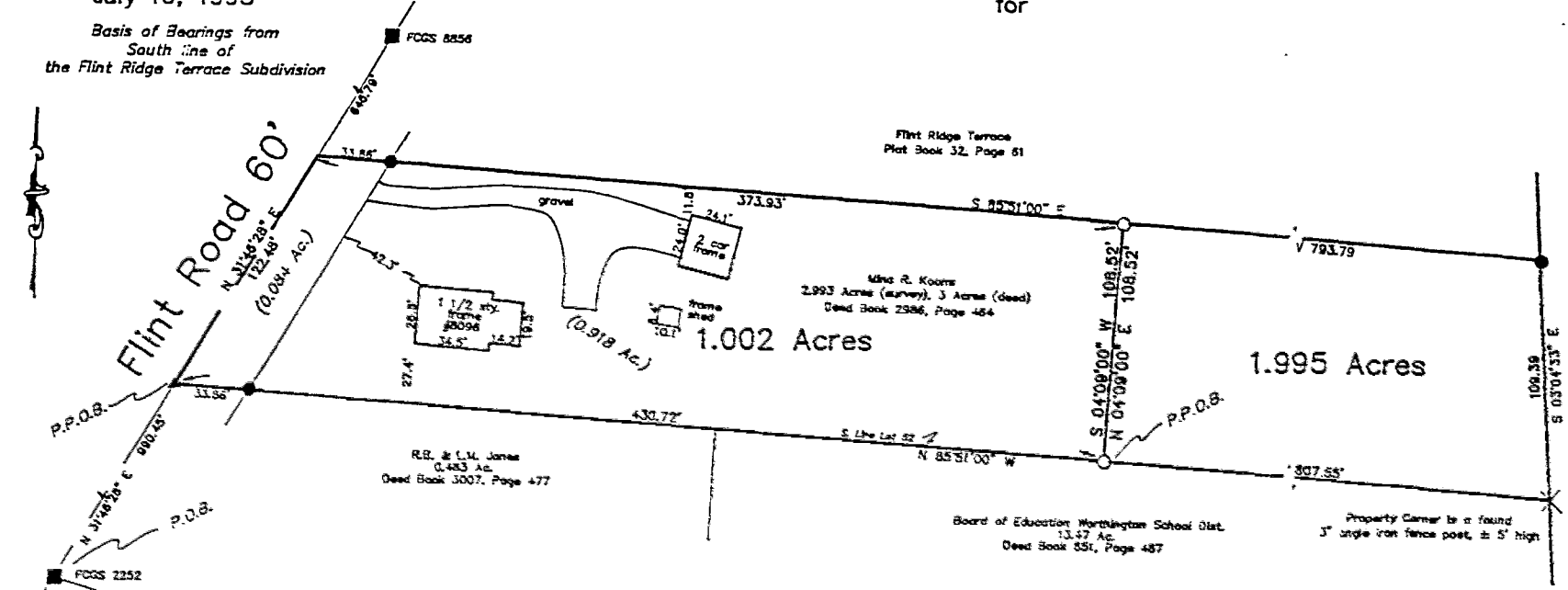


Plat showing division of 2.997 Acres (3 Acres, Deed Book 2986, Page 464),  
into a 1.002 acre and 1.995 acre tracts,  
located in part of Farm Lot 52, Sec. 2, T-2, R-18, U.S. Military Lands,  
Sharon Township, Franklin County, Ohio  
for



Scale 1" = 60'  
July 16, 1993

Basis of Bearings from  
South line of  
the Flint Ridge Terrace Subdivision



Conrail R.R.

LEGEND

- ind. iron pin
- set iron pin
- ▲ ind. railroad spike
- △ set railroad spike
- Franklin County Monument



I hereby certify that I have surveyed the property described in the foregoing title caption, and that said survey and plat are accurate and correct to the best of my knowledge. Easements, restrictions, and rights-of-way not located, unless noted.

*Bradley T. Patridge*  
Professional Surveyor No. 7058

PREPARED BY  
R. T. PATRIDGE AND ASSOCIATES  
PROFESSIONAL SURVEYORS AND ENGINEERS  
5495 GARDEN ROAD  
POWELL, OHIO 43065  
FAX (614) 881-3036  
TEL. (614) 881-3075