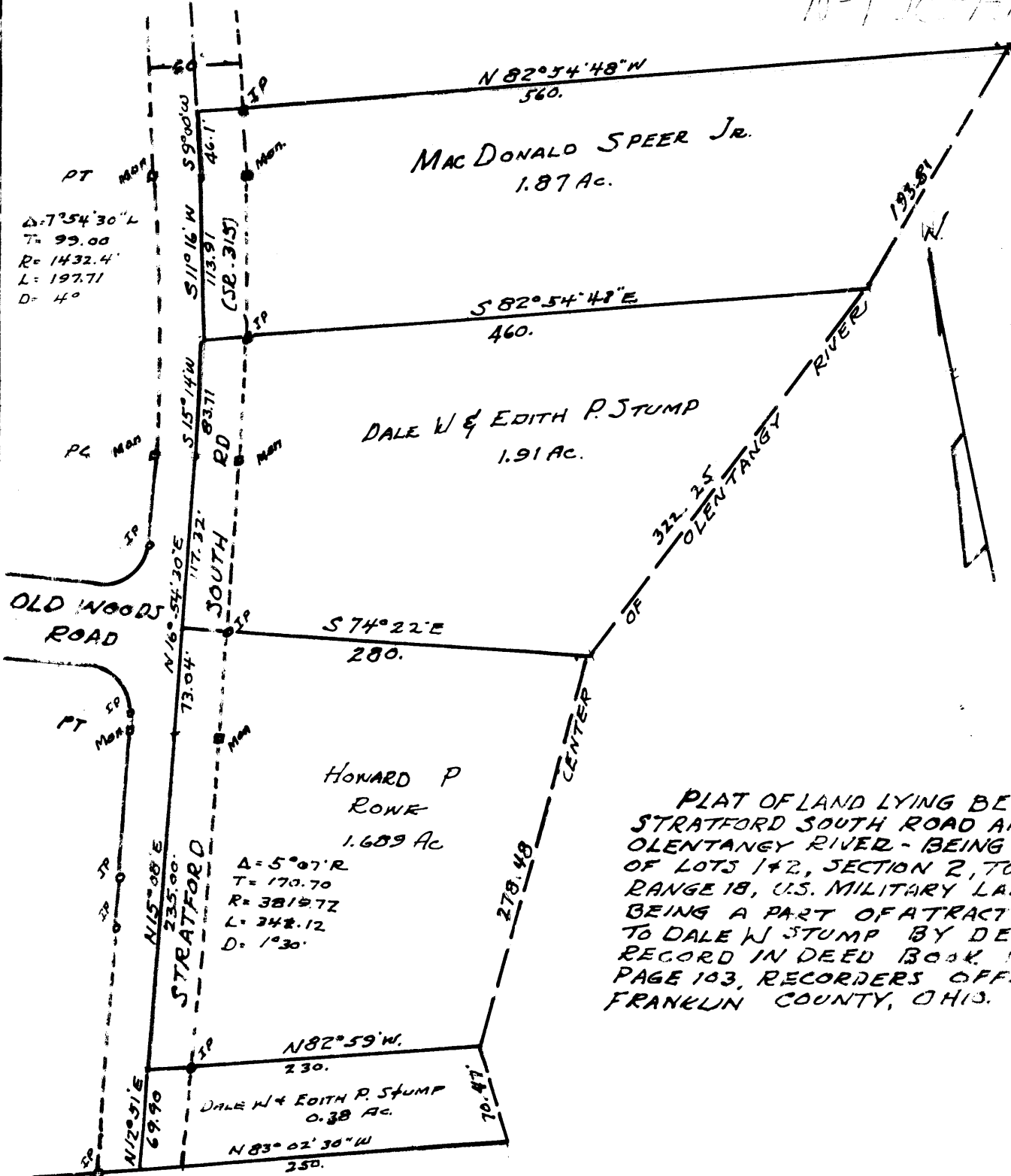


N-132-AA



PLAT OF LAND LYING BETWEEN STRATFORD SOUTH ROAD AND OLENTANGY RIVER - BEING PART OF LOTS 1 & 2, SECTION 2, TOWNSHIP 2, RANGE 18, U.S. MILITARY LANDS, AND BEING A PART OF A TRACT CONVEYED TO DALE W STUMP BY DEED OF RECORD IN DEED BOOK 1203 PAGE 103, RECORDERS OFFICE, FRANKLIN COUNTY, OHIO.

We hereby certify that we have surveyed and platted the property shown hereon and that said plat is correct.

C. W. Miller
C.W. Miller
Registered Surveyor No. 693.