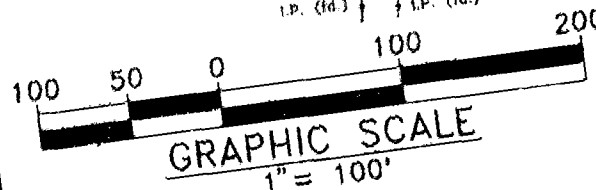
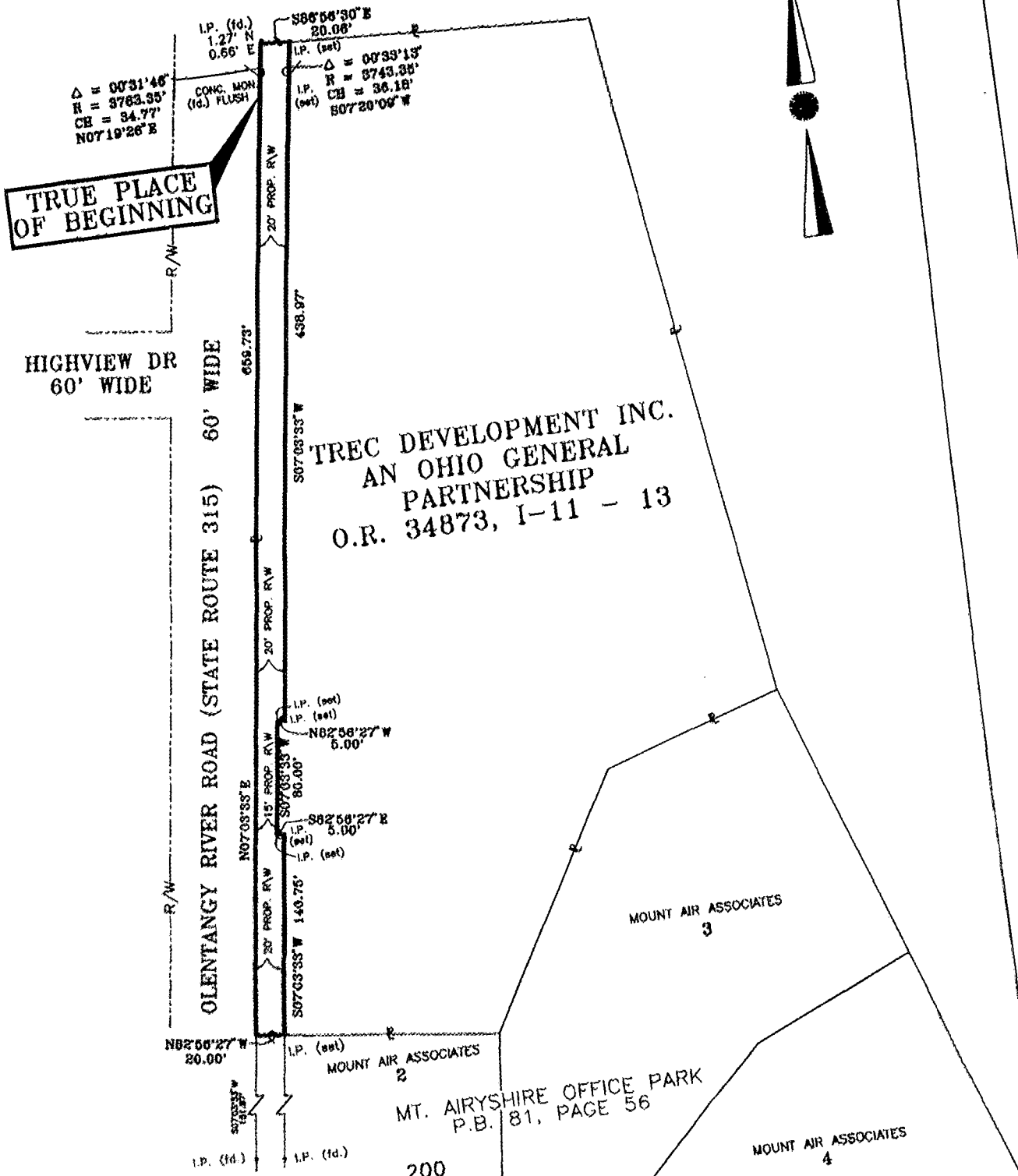


LOT SPLIT OF 0.310 ACRES OUT OF A 4.432 ACRE TRACT FOR RIGHT-OF-WAY DEDICATION



BASIS OF BEARINGS:
 BEARINGS WERE BASED ON THE EASTERLY RIGHT-OF-WAY LINE OF OLENTANGY RIVER ROAD AS BEING N 07°03'33" E AS RECORDED IN PREVIOUS DEED RECORD OFFICIAL RECORD 3487 1-13, RECORDER'S OFFICE, FRANKLIN COUNTY, OHIO.

BISCHOFF & ASSOCIATES, INC.
 Consulting Engineers
 907 KINNARD ROAD
 COLUMBUS, OHIO 43212-1421

PROJ. NO. 10851
 DRWG. 0851LS1
 PLOT FILE 0851LS1

1997

81 857 750