

BAUER, DAVIDSON & MERCHANT, INC.

CONSULTING ENGINEERS

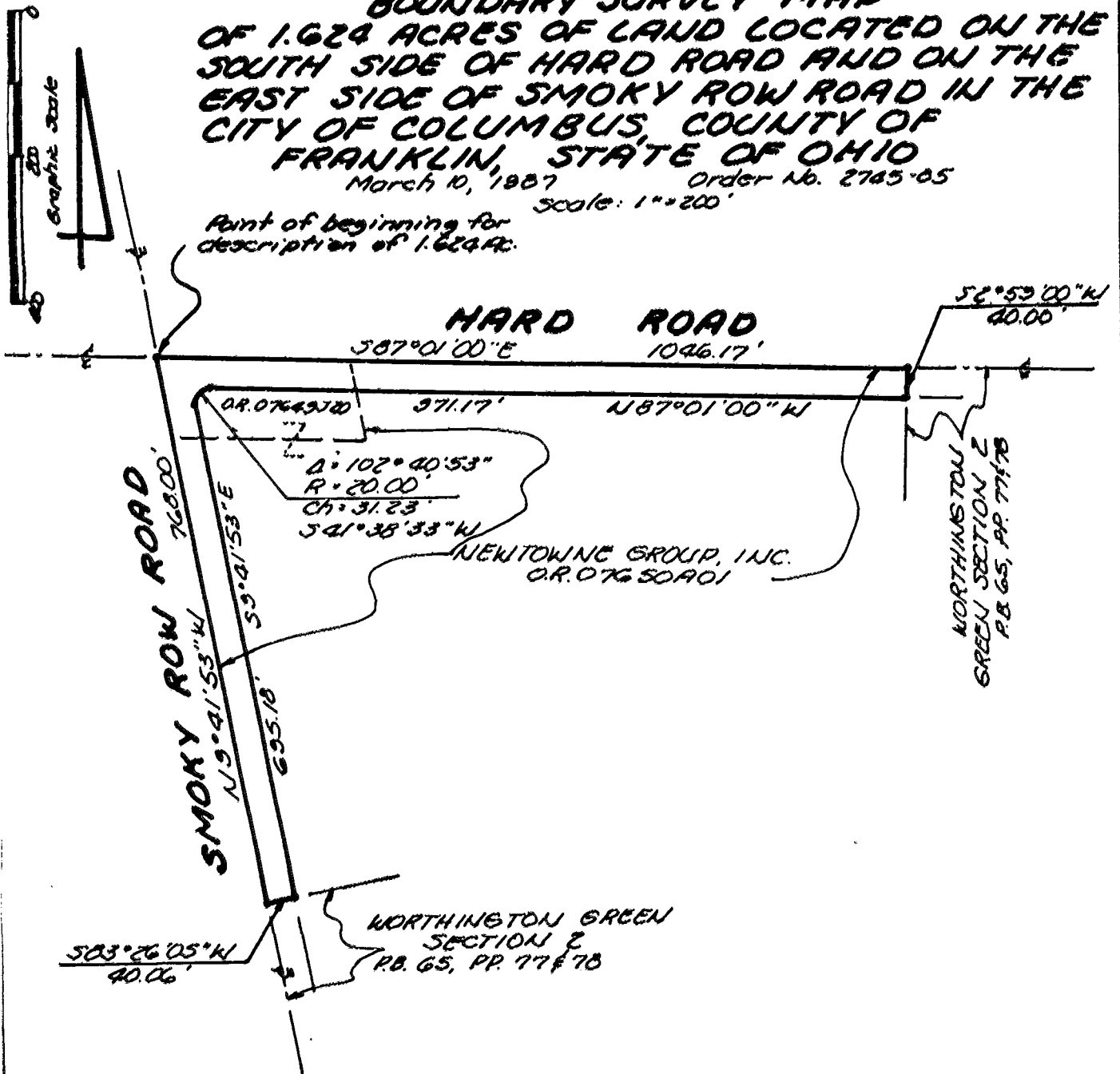
255 GREEN MEADOWS DRIVE SOUTH SUITE B P.O. BOX 152 POWELL, OHIO 43065

BOUNDARY SURVEY MAP OF 1.624 ACRES OF LAND LOCATED ON THE SOUTH SIDE OF HARD ROAD AND ON THE EAST SIDE OF SMOKY ROW ROAD IN THE CITY OF COLUMBUS, COUNTY OF FRANKLIN, STATE OF OHIO

March 10, 1987 Order No. 2745-85

Scale: 1"=200'

Point of beginning for
description of 1.624 ac.



Situated in the State of Ohio, County of Franklin, City of Columbus, being in Quarter Township 1, Township 2, Range 19, United States Military Lands and being 1.624 acres of land, more or less, said 1.624 acres of land being out of those tracts of land described in the deeds to Newtowne Group, Inc. of record in Official Record 07650901 and Official Record 07649320, Recorder's Office, Franklin County, Ohio.

The bearings shown on the above map correspond to the bearings shown on the recorded plat of Worthington Green Section 2.

We hereby certify that the above map was prepared from information obtained from an actual field survey of the premises conducted by Bauer, Davidson & Merchant, Inc. in March of 1987.

Bauer, Davidson & Merchant, Inc.
Consulting Engineers

by Jimmie L. Davis
Jimmie L. Davis
Professional Surveyor No. 6942