

# BAUER, DAVIDSON & MERCHANT, INC.

CONSULTING ENGINEERS/8035 7700

51-87-5

255 GREEN MEADOWS DRIVE SOUTH SUITE B P.O. BOX 152 POWELL, OHIO 43085

MAP OF PROPOSED LOT SPLITS OF LOT 477 AND LOT 478 SUMMERWOOD SECTION NO. 4 PART FOUR, IN THE CITY OF COLUMBUS, COUNTY OF FRANKLIN, STATE OF OHIO.

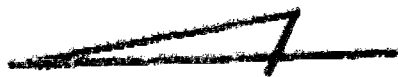


Graphic Scale

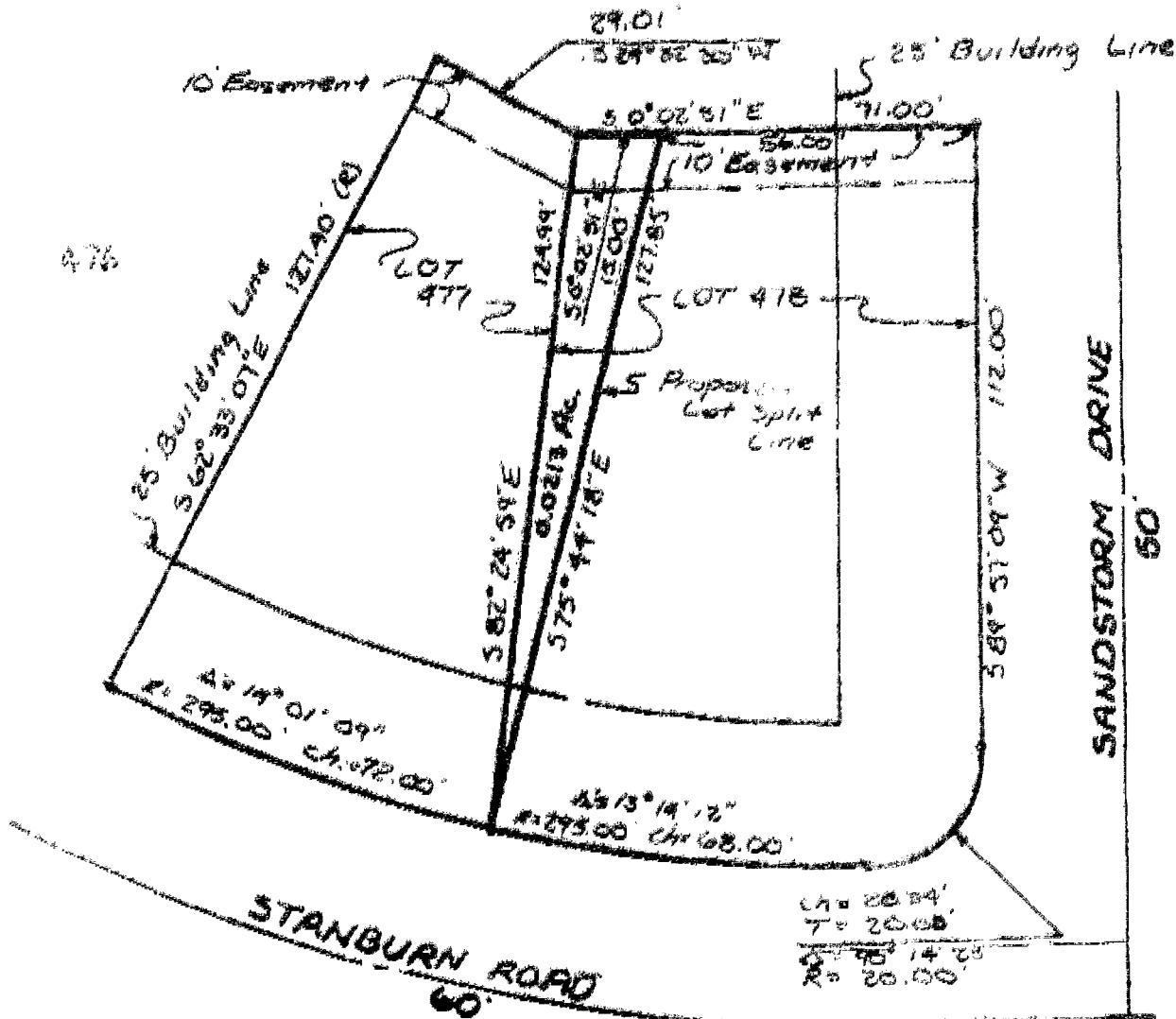
1" = 30'

Order No. 51-87

January 13, 1987



479

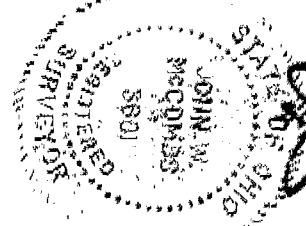


Situated in the State of Ohio, County of Franklin, City of Columbus, containing a 0.0213 acre of land, more or less, and 0.0213 acre parcel being part of Lot 477, as the same is numbered and delineated upon the recorded plat of Summerwood Section No. 4, Part Four, of record in Plat Book 41, Pages 67 and 68, Recorder's Office, Franklin County, Ohio.

We hereby certify that the above map was prepared with information obtained from an actual field survey of the premises conducted by Bauer, Davidson & Merchant, Inc. in January of 1987.

The bearings shown on the above map correspond to the bearings shown on the recorded plat of Summerwood Section No. 4, Part Four.

BAUER, DAVIDSON & MERCHANT, INC.  
Consulting Engineers



*John W. McCombs*  
John W. McCombs  
Professional Surveyor No. 6161