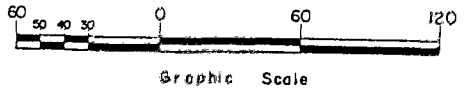


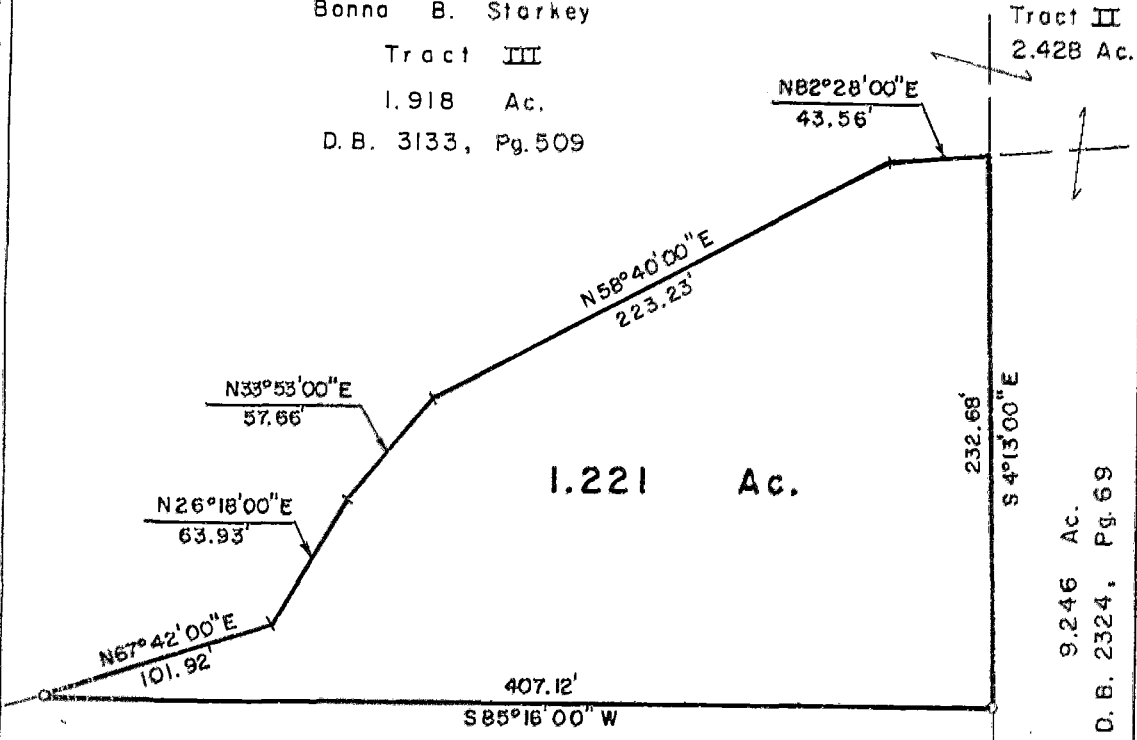
SURVEY OF ACREAGE PARCEL
 LOCATED IN VIRGINIA MILITARY SURVEY NO. 2543
 CITY OF DUBLIN, FRANKLIN COUNTY, OHIO

SCALE 1" = 60' January 20, 1989 RECORD REFERENCES O.R. 6749I03



Bonno B. Starkey
 Tract III
 1.918 Ac.
 D. B. 3133, Pg. 509

Tract II
 2.428 Ac.



9.246 Ac.
 D. B. 2324, Pg. 69

The Board of Education of the
 Dublin Local School District
 9.590 Ac.
 O.R. 6749I03

NOTES:
 The bearings contained herein are based on the same meridian as bearings in deed of record in Official Record 6749I03.

We hereby declare that the foregoing plat was prepared from an actual survey of the premises and shows the location of the boundary

E.M.H.&T. INC.

By *Thomas D. Sibbald*
 Professional Surveyor No. 590E
 Thomas C. Sibbald

17910700
 0-107-2