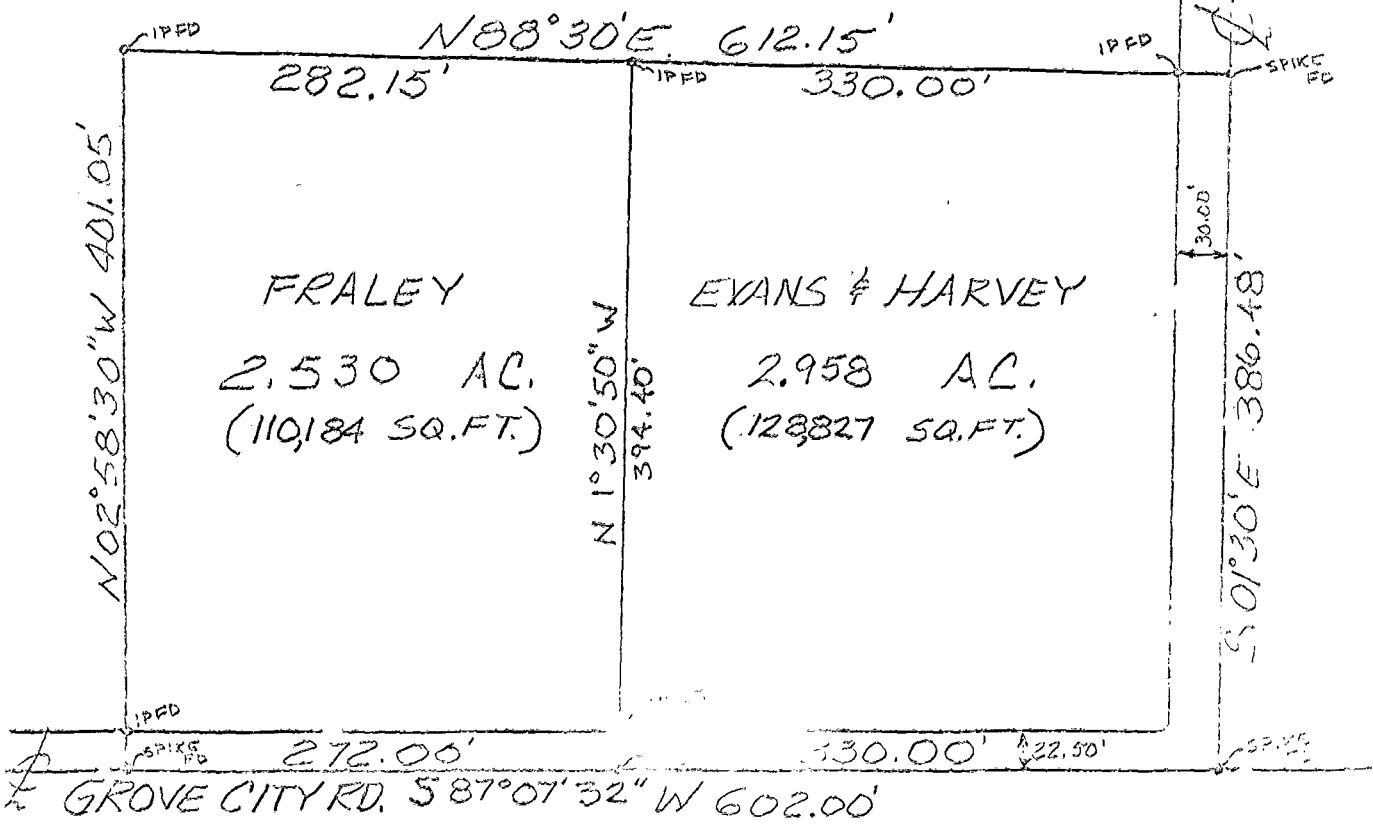


# LOT SPLIT FOR RAY FRALEY GROVE CITY ROAD AT HOLT ROAD

CHARLES A LYKINS AND GENEVA C LYKINS

NORTH  
Scale: 1"=100'

SITUATED IN THE STATE  
OF OHIO, COUNTY OF  
FRANKLIN, TOWNSHIP  
OF PLEASANT, PART OF  
LOT 4 OF SAMUEL OLDHAM'S  
SURVEY NO. 1448~PRIOR  
DEED REFERENCE;  
OFFICIAL RECORD 03863104



FRALEY  
2,530 AC.  
(110,184 SQ.FT.)

EVANS & HARVEY  
2,958 AC.  
(128,827 SQ.FT.)



I HEREBY CERTIFY THAT THIS PLAT  
WAS PREPARED FROM AN ACTUAL  
FIELD SURVEY BY THE  
JERRY A. MALOTT SURVEYING  
CO. IN OCTOBER 1986.

*Jerry A. Malott*  
Registered Surveyor No 5963