

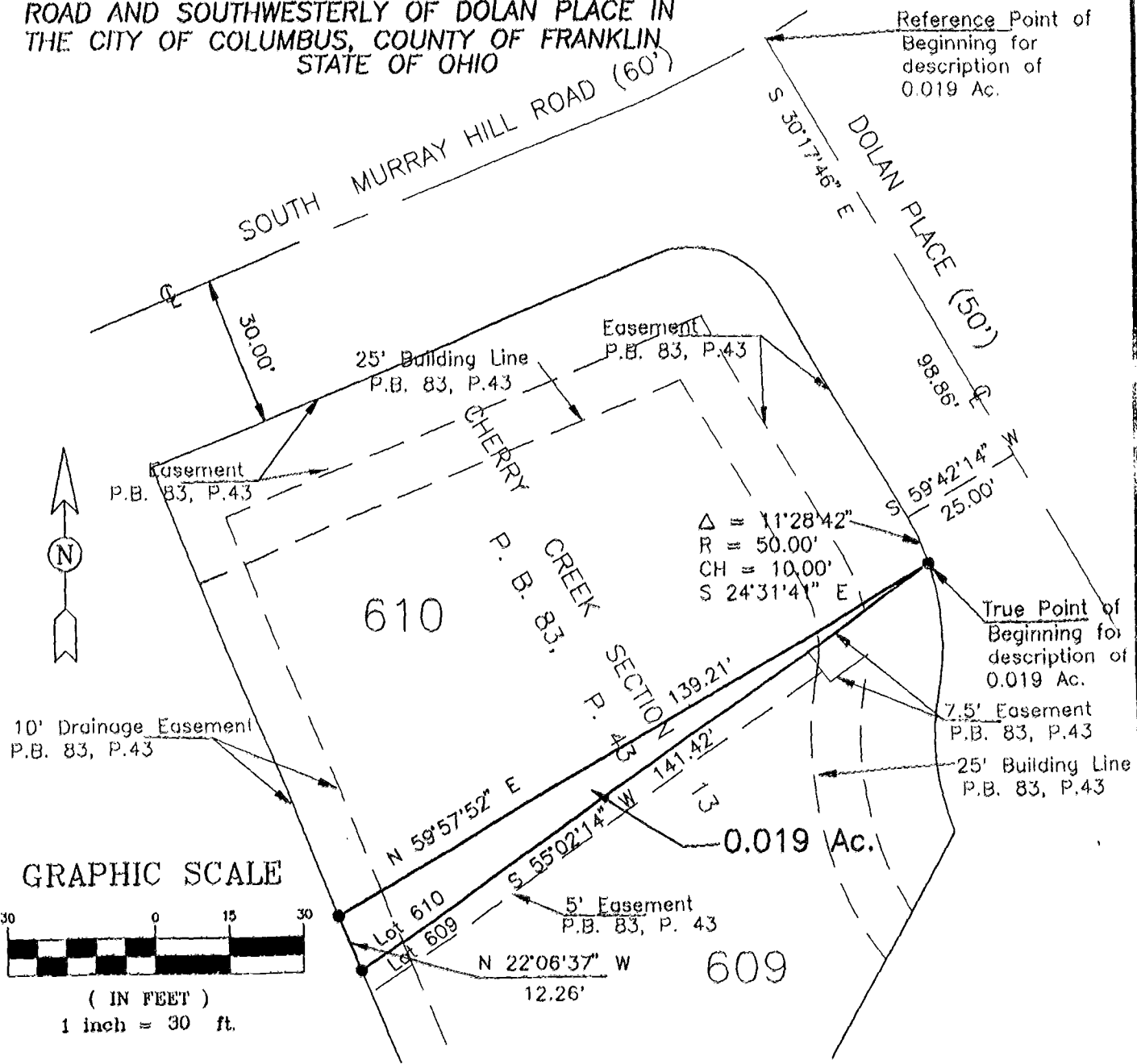
BAUER, DAVIDSON & MERCHANT, INC.

CONSULTING ENGINEERS

255 GREEN MEADOWS DRIVE SOUTH P.O. BOX 370 POWELL OHIO 43065

7/10/7050

MAP SHOWING THE SPLIT OF LOT 610 IN CHERRY CREEK SECTION 13 ON THE SOUTH SIDE OF SOUTH MURRAY HILL ROAD AND SOUTHWESTERLY OF DOLAN PLACE IN THE CITY OF COLUMBUS, COUNTY OF FRANKLIN, STATE OF OHIO



Situated in the State of Ohio, County of Franklin, City of Columbus, being in Virginia Military Survey No. 1425 and containing 0.019 acre of land, more or less, said 0.019 acre tract being part of Lot 610, as said lot is shown and delineated upon the recorded plat of Cherry Creek Section 13, of record in Plat Book 83, Page 43, Recorder's Office, Franklin County, Ohio.

We hereby state that the above map was prepared from information obtained from an actual field survey conducted by Bauer, Davidson & Merchant, Inc. in October of 1998.

The bearings shown on this map are based on the bearing S 30°17'46" E for the centerline of Dolan Place, as shown and delineated upon the recorded plat of Cherry Creek Section 13, of record in Plat Book 83, Page 43, Recorder's Office, Franklin County, Ohio.

BAUER, DAVIDSON & MERCHANT, INC.
Consulting Engineers

By *Gatis Erenpreiss*
Gatis Erenpreiss
Professional Surveyor No. 5572



Scale: 1" = 30'
Order No. 3559-98
November 17, 1998

ID#2 DWG98\35598

N-116-ccc