

SURVEY OF 0.084 ACRE TRACT
 LOCATED IN
 VIRGINIA MILITARY SURVEY NO. 1474
 CITY OF COLUMBUS, FRANKLIN COUNTY, OHIO

SCALE 1" = 30'

APRIL 21, 1994

—○— IRON PIN

RECORD REFERENCES

O.R. 6778 B 06

"EXHIBIT A"

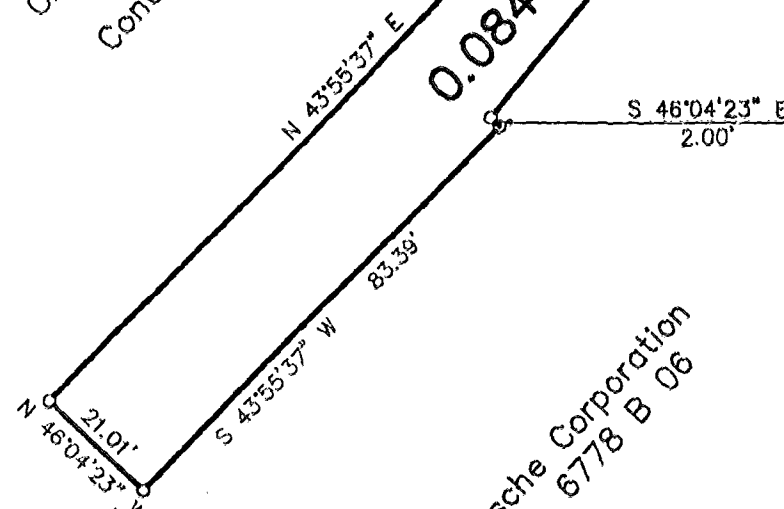


CHERRY CREEK PARKWAY NORTH
 (60')
 (P.B. 45, Pg. 33)

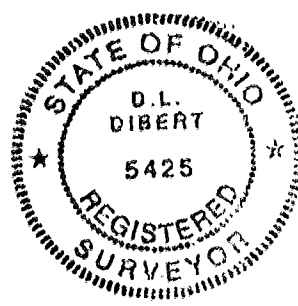
CHERRY CREEK VILLAS CONDOMINIUM
 PHASE II
 Condo Book 2, Pages 230 - 262

Δ = 00°51'19"
 R = 670.00'
 S 64°52'01" E
 Ch = 10.00'

0.084 AC.



Fritsche Corporation
 O.R. 6778 B 06



BASIS OF BEARINGS : The bearings shown hereon are based on a meridian in a bearing system in which the centerline of Cherry Creek Parkway North (at the subject site) has a chord bearing of North 63°13'30" West as shown on the record plat of the "Dedication Of Cherry Creek Parkway North" of record in Plat Book 45, Page 33, Recorder's Office, Franklin County, Ohio.

E.M.H.&T. INC.

By Donald P. Dibert
 Professional Surveyor No. 5425

C-93-B