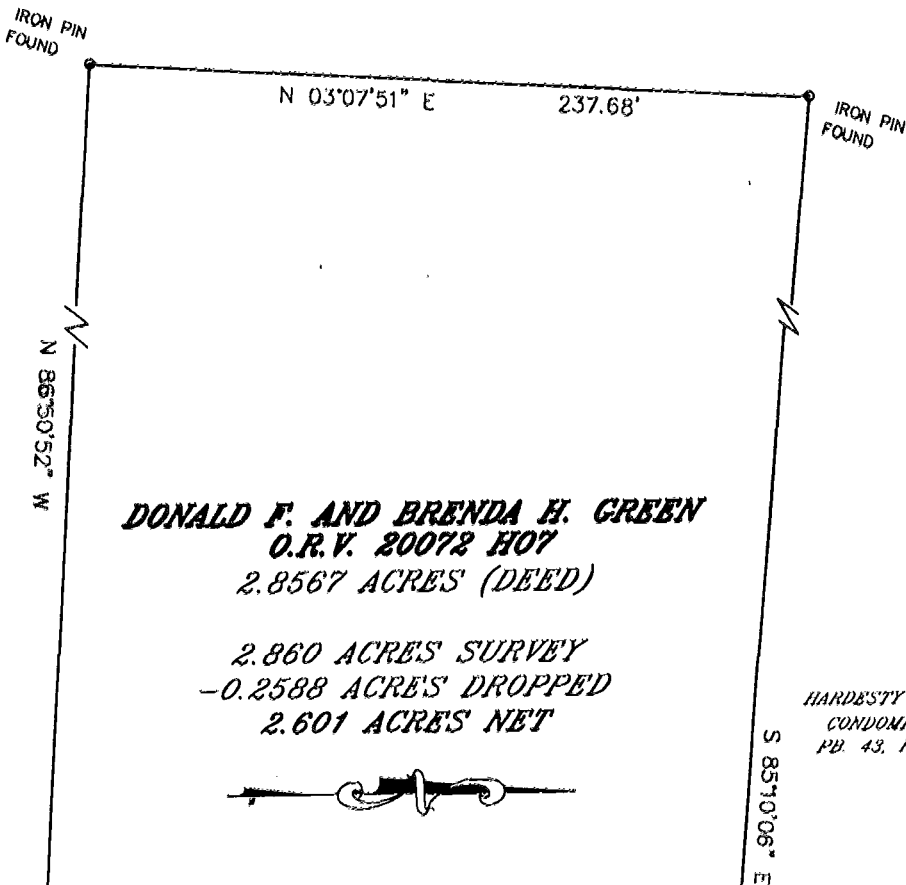


PREPARED BY:
HOCKADEN AND ASSOCIATES, INC.
 Consulting Engineers & Surveyors
 883 North Cassady Avenue
 Columbus, Ohio 43219
 Tele.: (614) 252-0993
 Fax: (614) 252-0444
 E-Mail: hock@asacomp.com

78607050

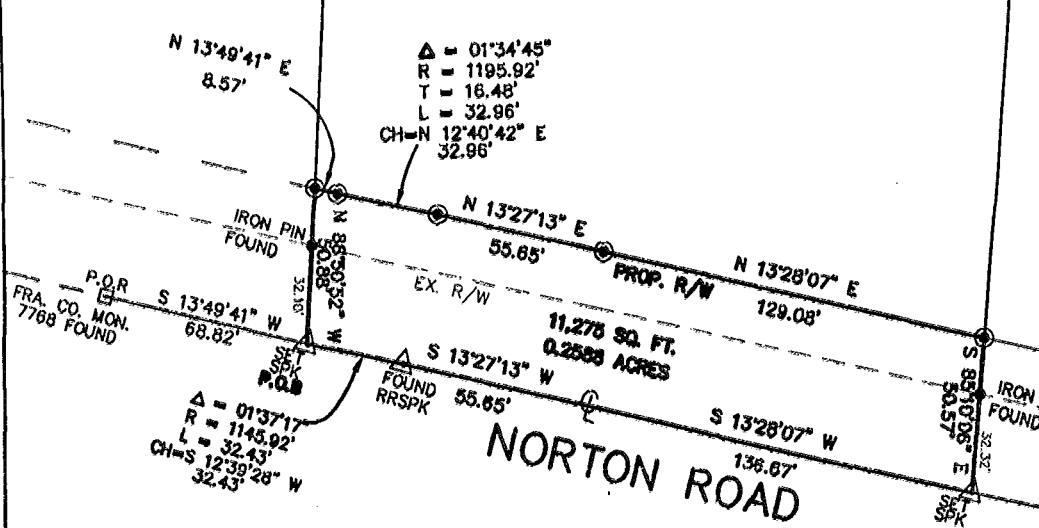
SITUATED IN THE STATE OF OHIO, COUNTY OF FRANKLIN, PRARIE TOWNSHIP
 BEING IN VIRGINIA MILITARY SURVEY NO. 9221, BEING 0.2588 ACRES
 OF LAND ALL OUT OF THAT 2.860 ACRE CONVEYED TO DON AND BRENDA GREEN
 OF RECORD IN O.R.V 20072 H07



DONALD F. AND BRENDA H. GREEN
O.R.V. 20072 H07
2.8567 ACRES (DEED)

2.860 ACRES SURVEY
-0.2588 ACRES DROPPED
2.601 ACRES NET

HARDESTY HEIGHTS
 CONDOMINIUMS
 PD. 43, PG. 12



GRAPHIC SCALE



- IRON PIN SET
- IRON PIN FOUND

(IN FEET)
 1 inch = 60 ft.



SCALE: 1"=60'

SURVD	DRAWN	CHECKED
SUR. BY	MP	F.C.L.

DATE: 8-25-99	
REVISED DATES	41259

HOCKADEN AND ASSOCIATES, INC.
 CONSULTING ENGINEERS

By *Frank C. Long* 25 Aug 99
 FRANK C. LONG P.S. NO. 6615

O-42-F
 PRARIE TWP