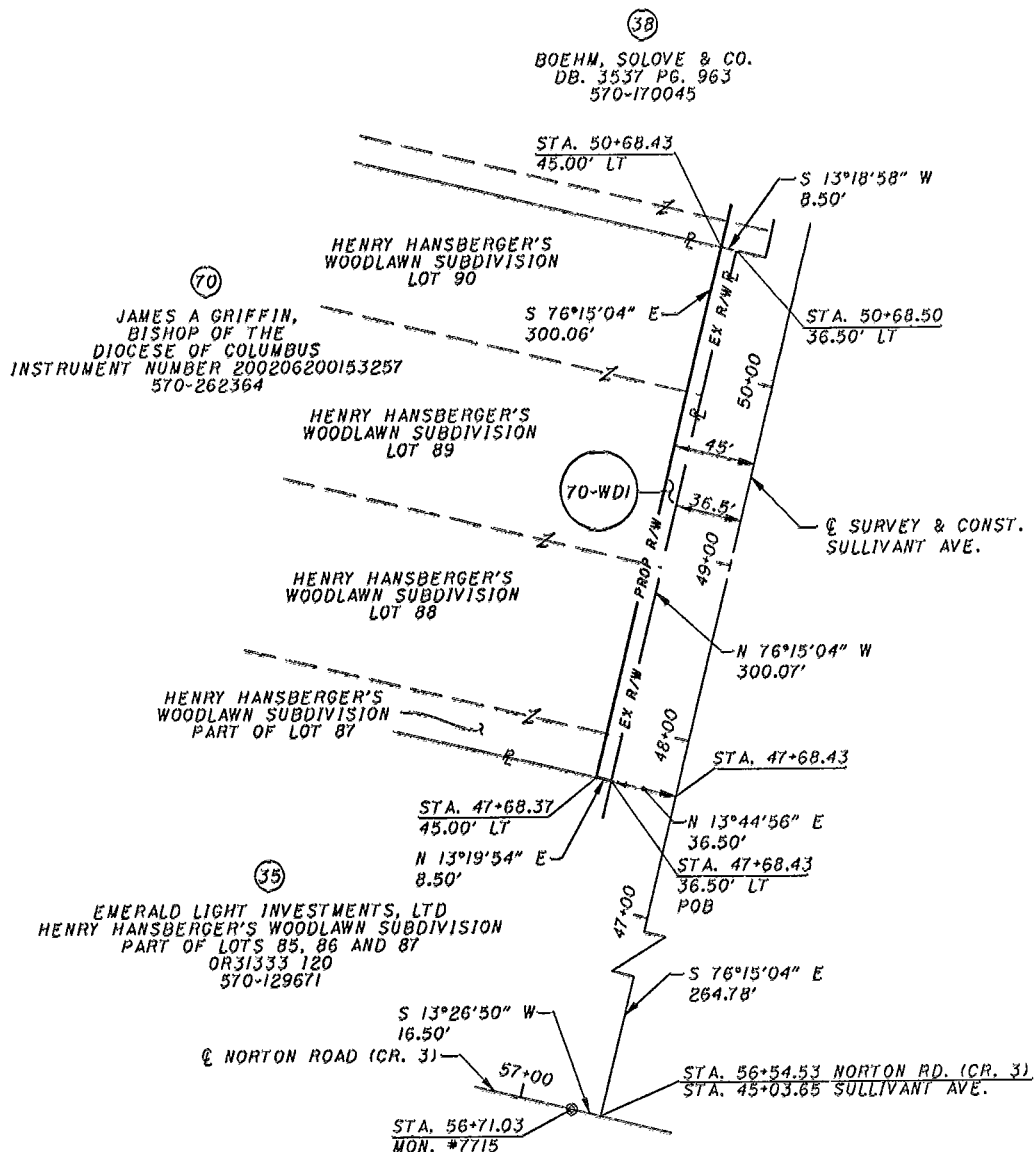
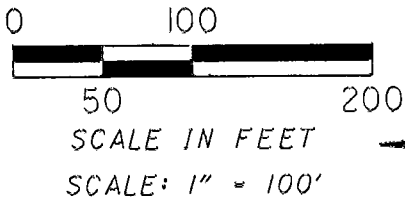


SITUATED IN THE CITY OF COLUMBUS, COUNTY OF FRANKLIN, STATE OF OHIO,  
 BEING LOCATED IN V.M.S. #1474 AND BEING 0.059 ACRES OUT OF 6.516 ACRES,  
 LOTS 88, 89 AND PART OF LOTS 87 AND 90 OF HENRY HANSBERGER'S WOODLAWN  
 SUBDIVISION, CONVEYED TO JAMES A. GRIFFIN, BISHOP OF THE DIOCESE OF COLUMBUS  
 AS DESCRIBED IN INSTRUMENT NUMBER 200206200153257.

18857075



BEARINGS WERE DERIVED FROM A GPS SURVEY PERFORMED BY THE FRANKLIN COUNTY ENGINEER'S OFFICE OCCUPYING FRANKLIN COUNTY GEODETIC CONTROL MONUMENTS AND ARE BASED UPON THE OHIO STATE PLANE COORDINATE SYSTEM, SOUTH ZONE, NAD83 (1986 ADJUSTMENT).



70-WDI  
 JAMES A. GRIFFIN,  
 BISHOP OF THE  
 DIOCESE OF COLUMBUS  
 570-262364



**PB** Parsons Brinckerhoff Ohio, Inc.  
 6235 Enterprise Court  
 Dublin, Ohio 43016

*Kerry D. Osborn*  
 KERRY D. OSBORN  
 P.S. # 7328  
 9/16/02  
 DATE

N-58