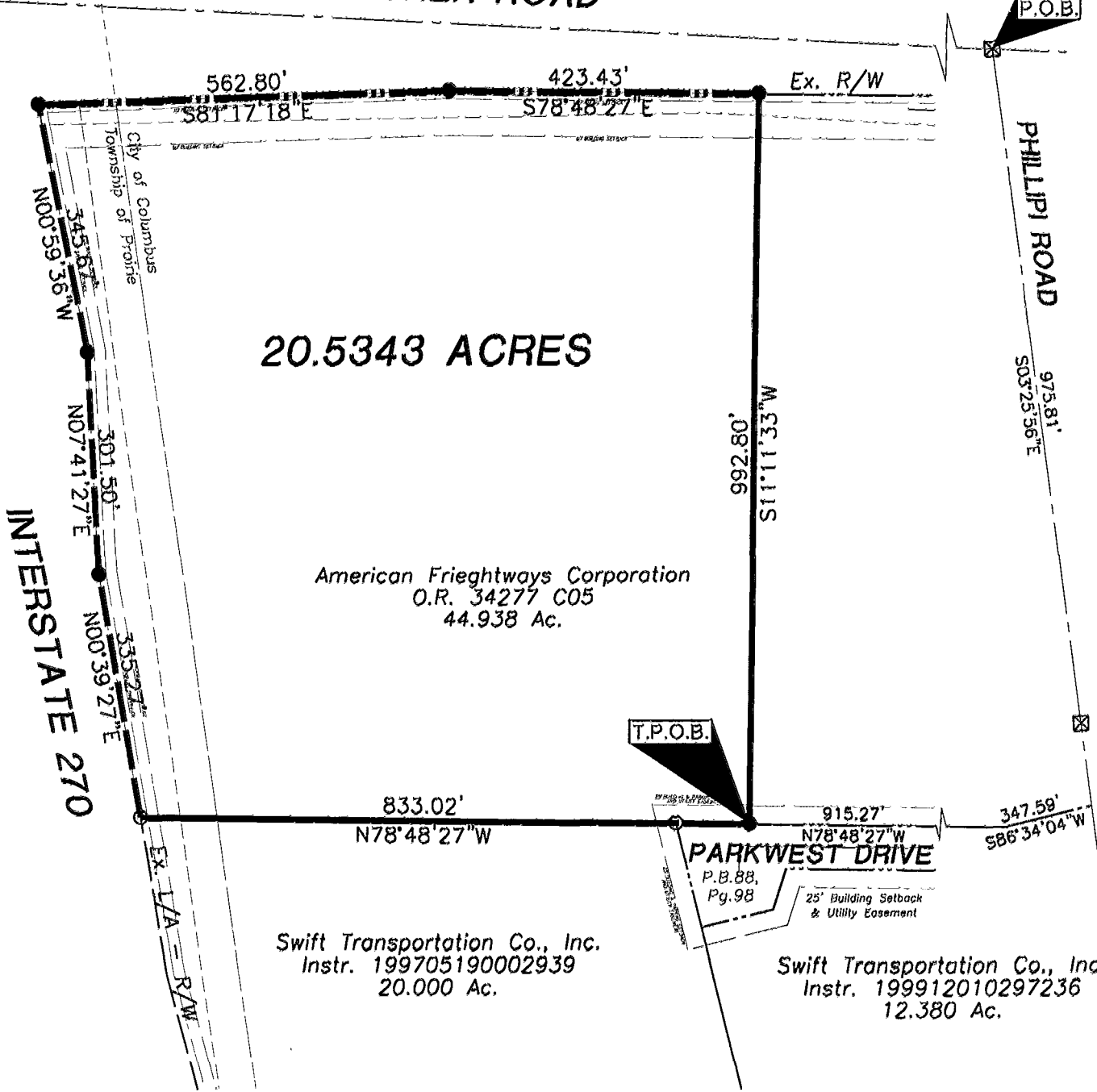


19352150/19352175

FISHER ROAD



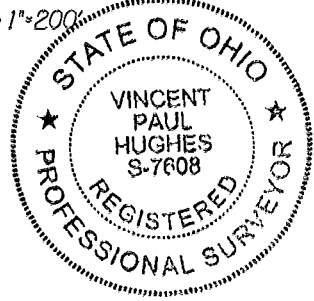
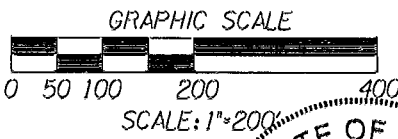
The bearings herein is a 1994 highway right of way plans of Phillipi road, showing the centerline as being North 03°25'56" West, on record at the Franklin County Engineer's Office, Franklin County, Ohio.

All iron pins set are 5/8" (O.D.) 30" long with a plastic cap stamp (LJB).



LEGEND

- ☒ MON. BOX FND
- I.P. FND
- I.P. SET



PRAIRIE TWP.

DRAWN	CHECKED	PROJECT NO.	BY:	DATE
	VPH	CO-18840	VINCENT P. HUGHES, P.S. 7608	10/6/01

0-90-D