

# Plat of Survey

GUIDER LAND SURVEYING

STATE OF OHIO  
FRANKLIN COUNTY  
PRAIRIE TOWNSHIP  
V.M.S. 5106

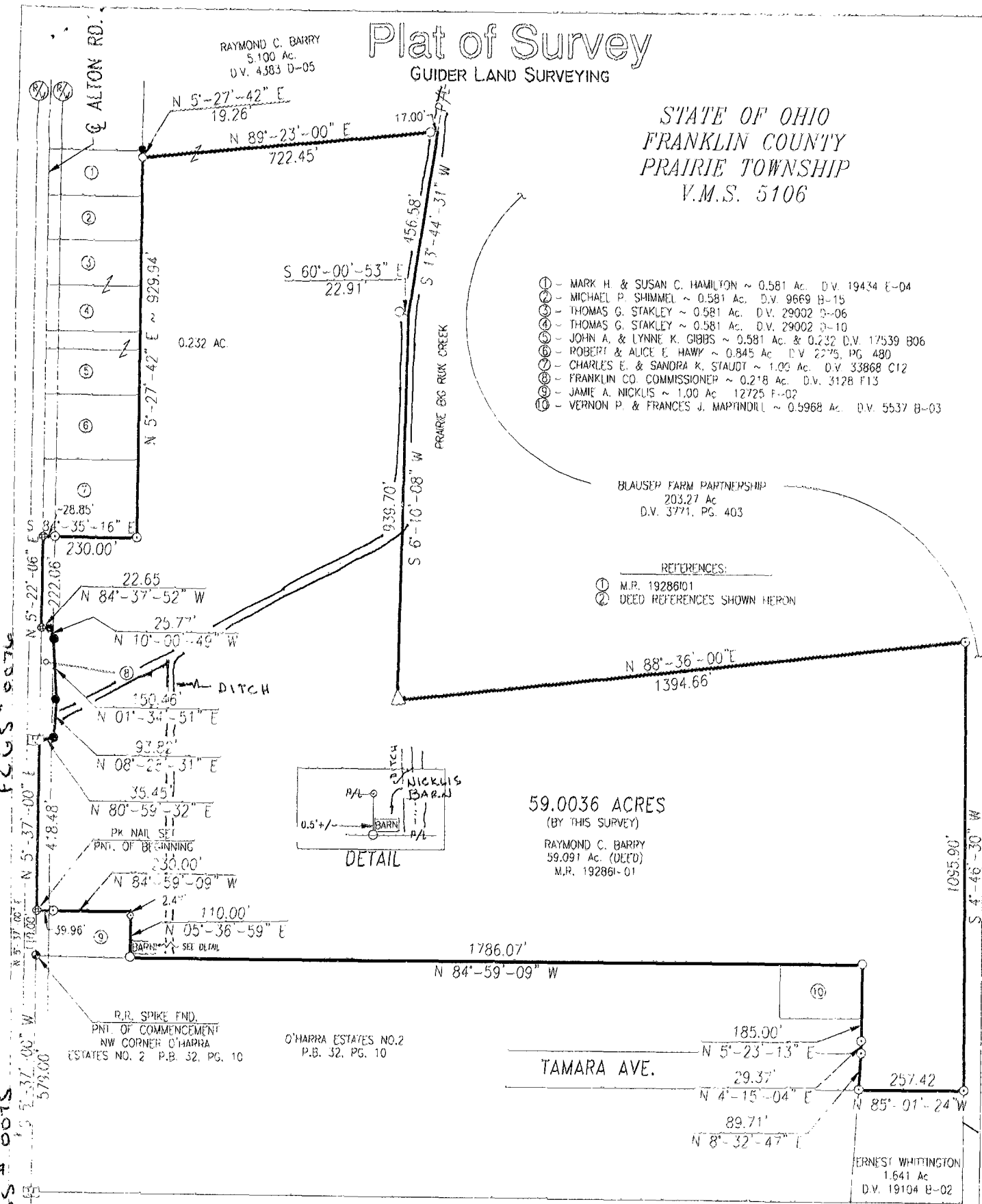
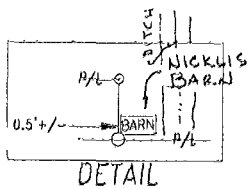
RAYMOND C. BARRY  
5.100 Ac.  
D.V. 4583 D-05

- ① - MARK H & SUSAN C. HAMILTON ~ 0.581 Ac. D.V. 19434 E-04
- ② - MICHAEL P. SHIMMEL ~ 0.581 Ac. D.V. 9669 B-15
- ③ - THOMAS G. STAKLEY ~ 0.581 Ac. D.V. 29002 D-06
- ④ - THOMAS G. STAKLEY ~ 0.581 Ac. D.V. 29002 D-10
- ⑤ - JOHN A. & LYNNE K. GIBBS ~ 0.581 Ac. & 0.232 D.V. 17539 B06
- ⑥ - ROBERT & ALICE E. HAWK ~ 0.845 Ac. D.V. 2275, PG. 480
- ⑦ - CHARLES E. & SANDRA K. STAUDI ~ 1.05 Ac. D.V. 33868 C12
- ⑧ - FRANKLIN CO. COMMISSIONER ~ 0.218 Ac. D.V. 3128 F13
- ⑨ - JAMIE A. NICKLIS ~ 1.00 Ac. 12725 F-02
- ⑩ - VERNON P. & FRANCES J. MAPINDILL ~ 0.5968 Ac. D.V. 5537 B-03

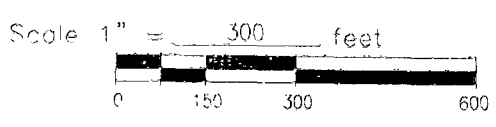
BLAUSEP FARM PARTNERSHIP  
203.27 Ac.  
D.V. 3771, PG. 403

- REFERENCES:
- ① M.P. 19286101
  - ② DEED REFERENCES SHOWN HERON

59.0036 ACRES  
(BY THIS SURVEY)  
RAYMOND C. BARRY  
59.091 Ac. (DECD)  
M.P. 192861-01



\* BASIS OF BEARING: Q ALTON RD. FROM M.P. 19286101  
N 5°-37'-00" E

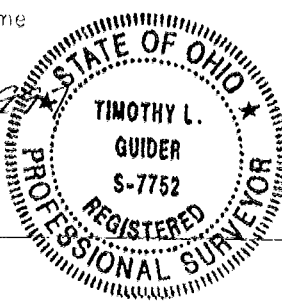


## CERTIFICATION

I hereby certify that this plat is an accurate representation of a actual field survey made by me during the month of May, 1997.

*Timothy L. Guider*  
Timothy L. Guider P.S. #7752  
240 West Third Street  
Marysville, Ohio 43040  
(937) 544-2656

June 3, 1997  
Date



## LEGEND

- - 5/8" x 30" Iron Pin set with cap marked "GUIDER S-7752"
- - Iron Pin Found
- ⊕ - PK Nail Set
- ⊙ - Railroad Spike Found
- ⊗ - Iron Pipe Found
- △ - Stone Found
- ⊠ - Monument Bc.

PRAIRIE 77857075  
 77857100  
 78167075

J88#9774