

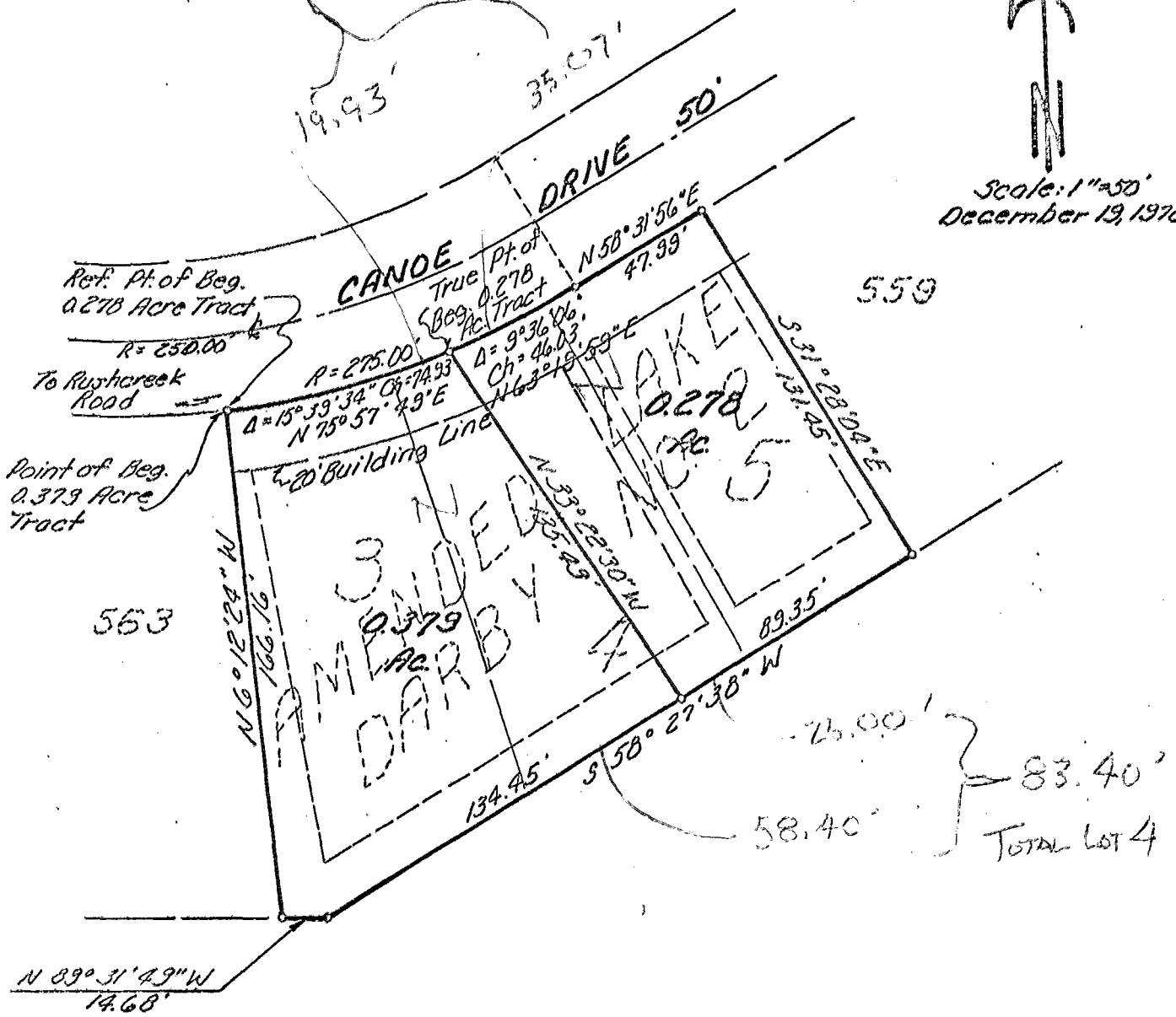
11-43-H

MAP SHOWING A 0.278 ACRE TRACT OF LAND (Lot 5 and Part of Lot 4) AND A 0.379 ACRE TRACT OF LAND (Lot 3 and Part of Lot 4) SOUTH OF CANOE DRIVE AND EAST OF RUSHCREEK ROAD IN PRAIRIE TOWNSHIP, FRANKLIN COUNTY, OHIO.

TOTAL LOT 4 55.60'



Scale: 1"=50'
December 19, 1978



BAUER, BORDOWITZ & MERCHANT, INC.
Consulting Engineers

11-43-H