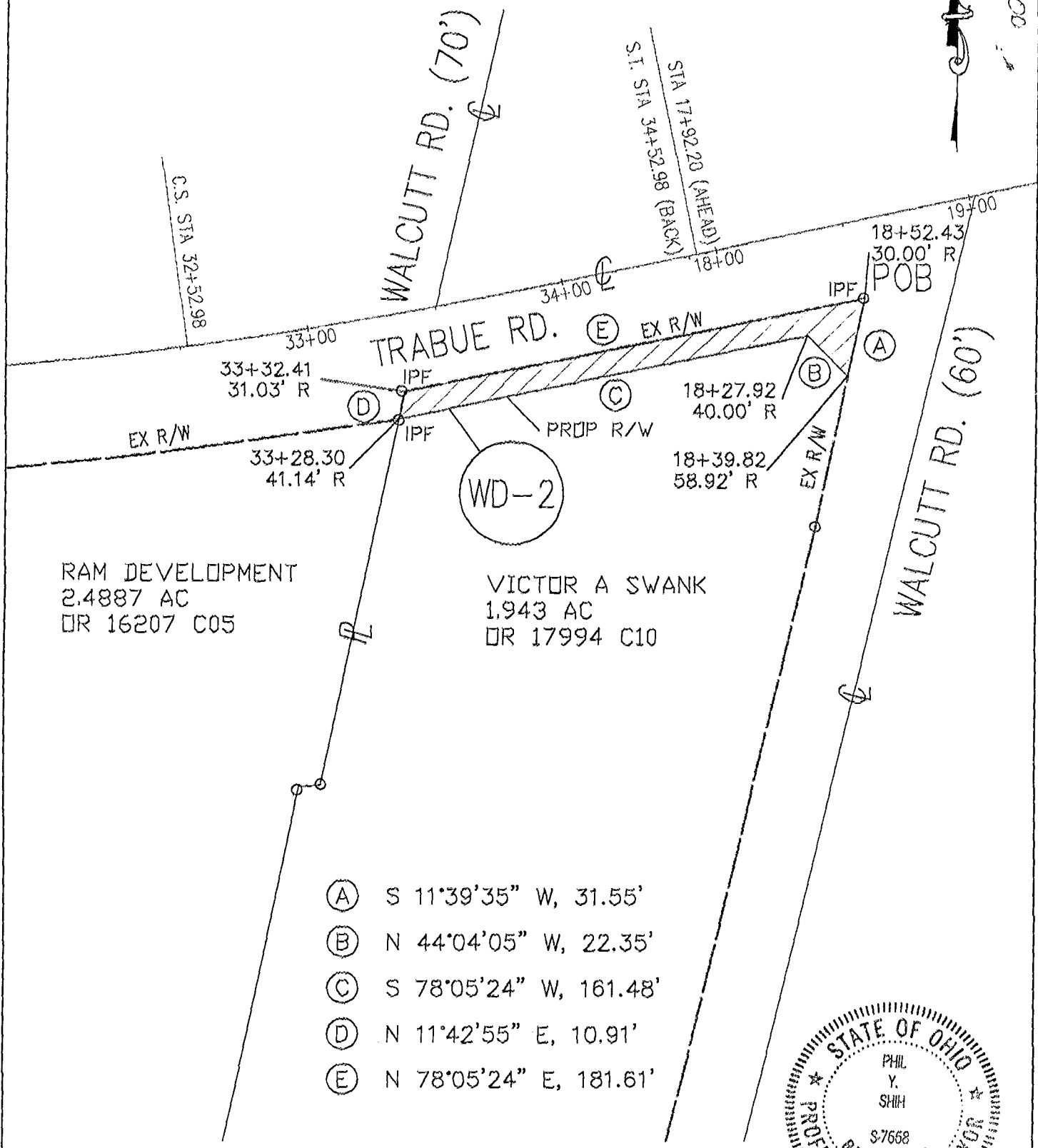


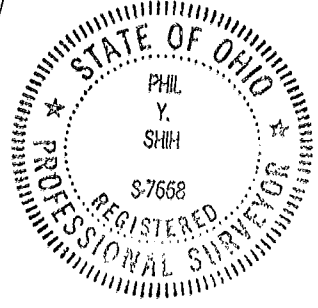
EXHIBIT A



78857200



- (A) S 11°39'35" W, 31.55'
- (B) N 44°04'05" W, 22.35'
- (C) S 78°05'24" W, 161.48'
- (D) N 11°42'55" E, 10.91'
- (E) N 78°05'24" E, 181.61'



I HEREBY CERTIFY THAT THIS PLAT IS BASED ON AN ACTUAL FIELD SURVEY PERFORMED BY COLUMBUS ENGINEERING CONSULTANTS IN 1998.

BASIS OF BEARING WAS THE CENTERLINE OF TRABUE ROAD AS BEING N 78°05'24" E AND WAS TRANSFERRED FROM A GPS SURVEY OF FRANKLIN COUNTY GEODETIC SURVEY MONUMENTS WEDIEHL AND GRANDVIEW, AND WAS BASED ON THE STATE PLANE COORDINATE SYSTEM NAD 83, SOUTH ZONE, OHIO.

*Phil Y. Shih* 2-1-99  
 PHIL Y. SHIH DATE  
 P.S. No 7668

COLUMBUS ENGINEERING CONSULTANTS, INC.  
  
 Consulting Civil Engineers  
 840 Michigan Avenue  
 Columbus, OH 43215  
 TEL (614) 228-3600 FAX (614) 228-3619

C-90-A  
 PAIRIE TWP