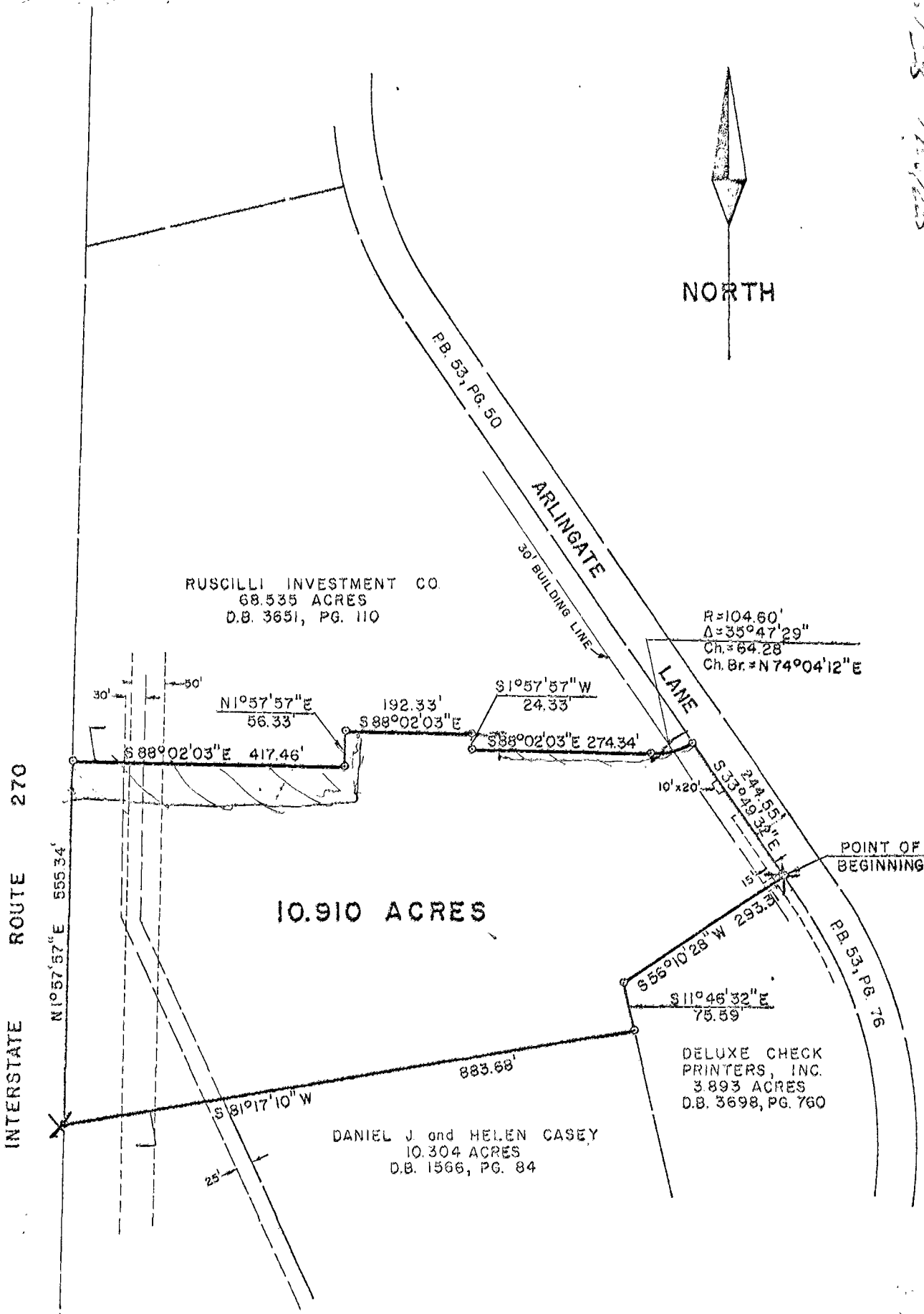


1/5/80
2/15/80
3/16/80
4/12/80
5/12/80

6-15-11



RUSCILLI INVESTMENT CO.
68.535 ACRES
D.B. 3651, PG. 110

R=104.60'
Δ=35°47'29"
Ch.=64.28
Ch.Br.=N74°04'12"E

10.910 ACRES

DELUXE CHECK
PRINTERS, INC.
3.893 ACRES
D.B. 3698, PG. 760

DANIEL J and HELEN CASEY
10.304 ACRES
D.B. 1566, PG. 84

EASEMENTS ARE INDICATED THUS: =====

WILMINGTON TWP

SCALE 1" = 200'

DATE: 7/17/80
REVISED DATES

P-545
ORDER NUMBERS

HOCKADEN AND ASSOCIATES, INC.
CONSULTING ENGINEERS

| | | |
|------|-------|---------|
| DATE | DRAWN | CHECKED |
| | RSW | |

| | |
|------|-------|
| DATE | ORDER |
| | |
| | |
| | |

By: *[Signature]*
REGISTERED SURVEYOR